

Brentwood Towne Square

Pittsburgh, PA



Available Premises

Building A - Route 51

Second Floor - Office

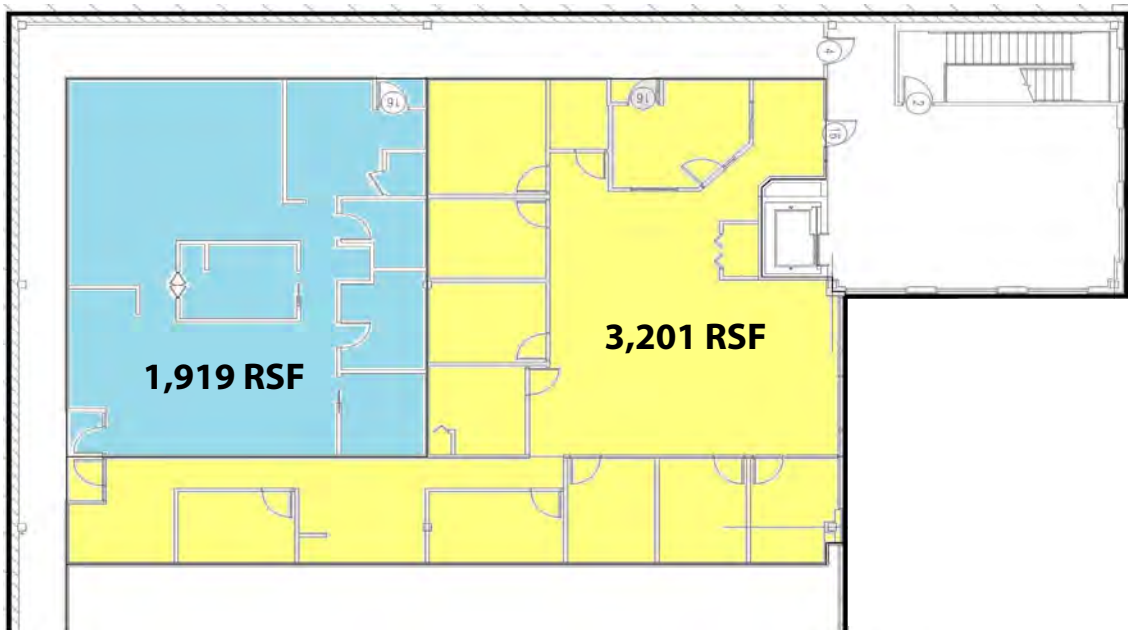
- 3,201 RSF
- 1,919 RSF
- 5,120 RSF Total

Property Highlights

- Class "A" office/retail building in the exciting development of Brentwood Towne Square
- Excellent access and visibility along Route 51 and Brownsville Road, just minutes from Downtown Pittsburgh
- Attractive lease rates
- Exterior signage along Route 51
- Many amenities adjacent to your offices



Building "A"
Second Floor - Office / 5,120 RSF Total



For more information please contact:

Jeffrey A. Deitrick, SIOR
Executive Vice President

Oxford Realty Services, Inc.
412.261.0200, ext 3473
jdeitrick@oxfordrealtyservices.com

Spencer L. Baker
Associate

Oxford Realty Services, Inc.
412.261.0200, ext 3473
sbaker@oxfordrealtyservices.com

 **OXFORD**
REALTY SERVICES, INC.

One Oxford Centre
301 Grant Street - Suite 400
Pittsburgh, PA 15219
www.oxfordrealtyservices.com

Although all information furnished regarding property for sale, rental or financing is from sources deemed reliable, such information has not been verified, and no express representation is made nor is any to be implied as to the accuracy thereof, and it is submitted subject to errors, omissions, change of price, rental or other conditions, prior sale, lease or financing, or withdrawal without notice. Rental terms and all dimensions are approximate and specifications are subject to change without notice. Oxford Realty Services, Inc., an independent real estate services company.