

Towne Centre Offices

1789 South Braddock Avenue, Pittsburgh, PA 15218



Building Size

- 93,068 RSF

Available Premises

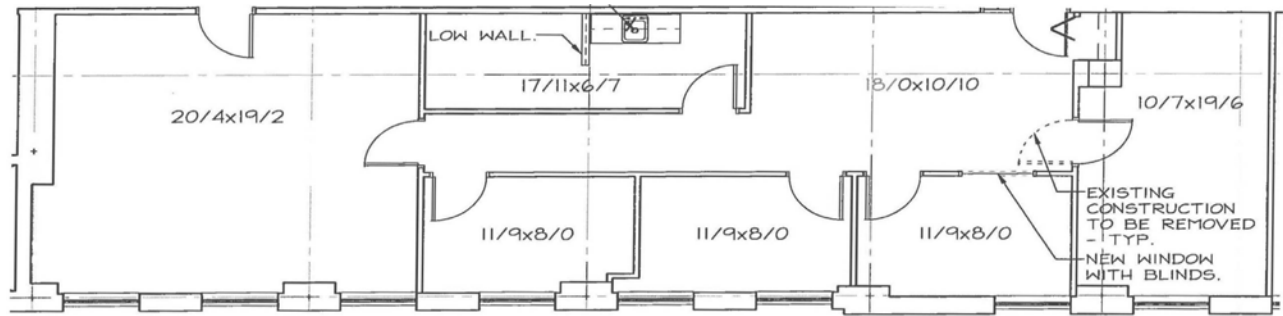
Fifth Floor

- 1,726 RSF

Property Highlights

- The offices are conveniently located at the Edgewood/ Swissvale exit just off of the Parkway East (I-376)
- To the East, Monroeville and the PA Turnpike (I-76) are only 6 miles away and to the West, Pittsburgh's CBD is only 7 miles away
- Flexible floor plans are available to fit your needs - large or small
- Ample free parking
- On-site property management
- Full service lease includes all utilities and janitorial services

Fifth Floor 1,726 RSF



For more information please contact:

Spencer L. Baker

Associate

Oxford Realty Services, Inc.

412.261.0200, ext 3460

sbaker@oxfordrealtyservices.com

Taylor N. Powell

Associate

Oxford Realty Services, Inc.

412.261.0200, ext 3493

tpowell@oxfordrealtyservices.com

OXFORD
REALTY SERVICES, INC.

One Oxford Centre

301 Grant Street - Suite 400

Pittsburgh, PA 15219

www.oxfordrealtyservices.com

Although all information furnished regarding property for sale, rental or financing is from sources deemed reliable, such information has not been verified, and no express representation is made nor is any to be implied as to the accuracy thereof, and it is submitted subject to errors, omissions, change of price, rental or other conditions, prior sale, lease or financing, or withdrawal without notice. Rental terms and all dimensions are approximate and specifications are subject to change without notice. Oxford Realty Services, Inc., an independent real estate services company.