

# 2400 Oxford Drive

Bethel Park, Pennsylvania 15102



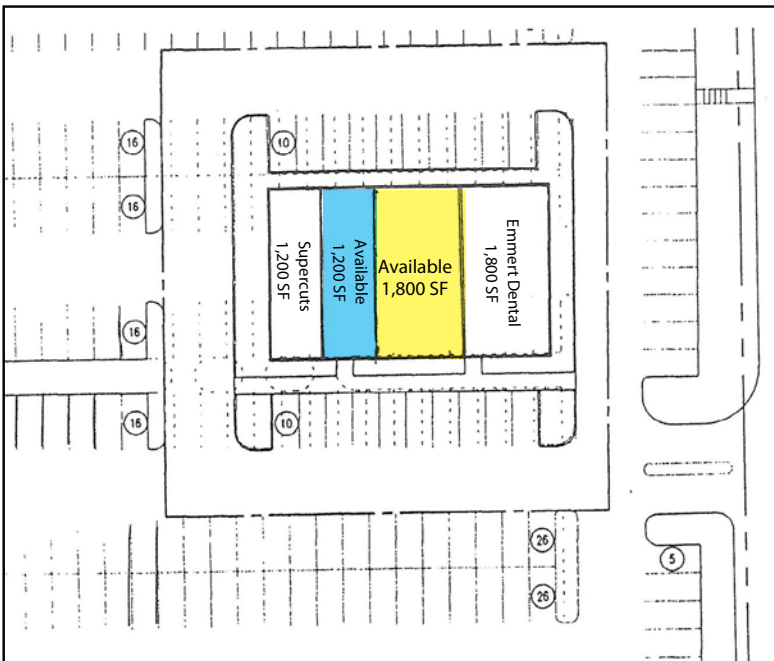
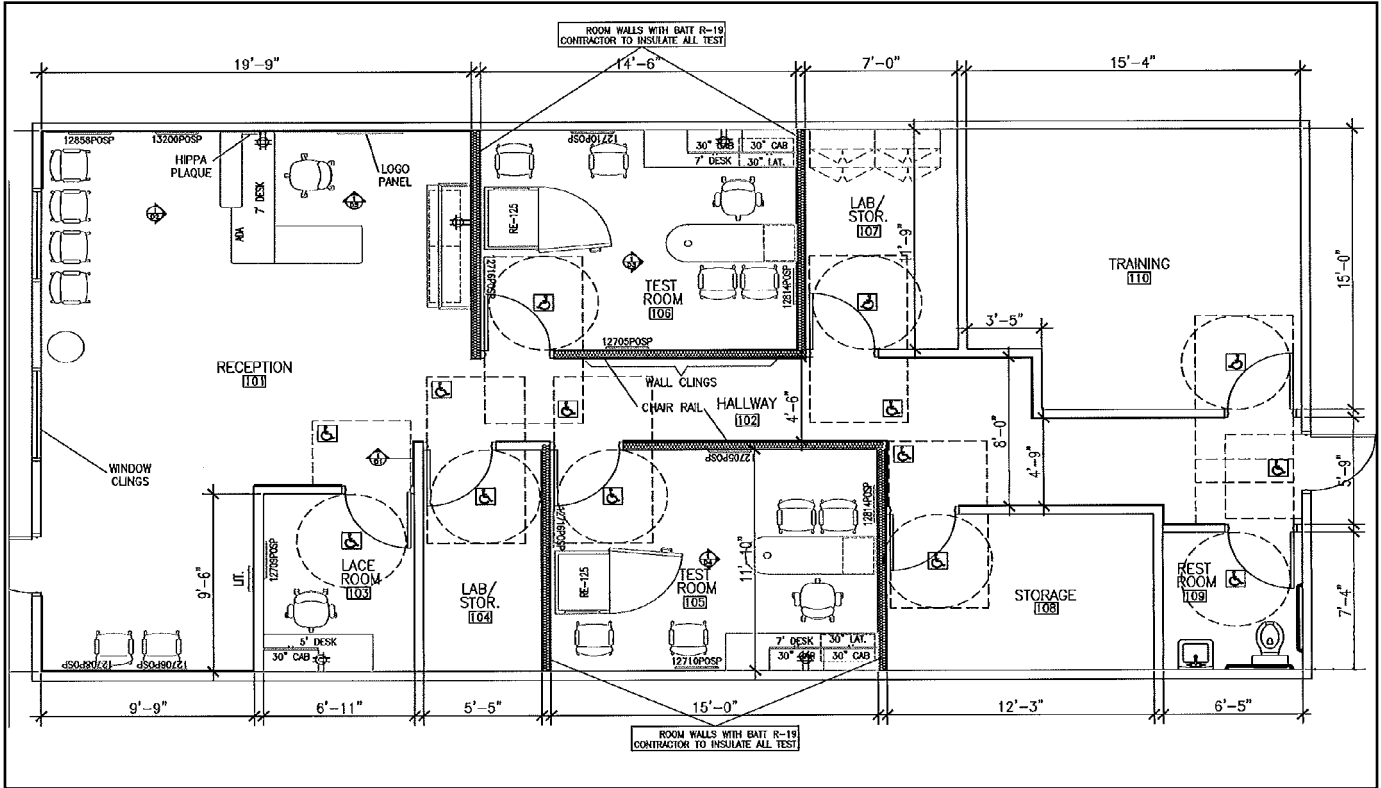
## Available

- 1,200 SF (approximately 20' x 60')
- 1,800 SF (approximately 30' x 60")

## Property Highlights

- Ideal location, adjacent to Village Square and in close proximity to South Hills Village Mall
- Great visibility and access
- Co-tenants include Supercuts and Emmert Dental
- Conveniently located 7.5 miles south of Pittsburgh, near the intersection of Fort Couch Road and Oxford Drive
- Located in the heart of the Bethel Park regional trade area

## 1,800 SF Available Space



### DEMOGRAPHICS

	3-MILES	5-MILES
Population	95,134	238,801
Avg. HH Income	\$116,839	\$100,542

For more information please contact:

**Arthur J. DiDonato, Jr.**  
Senior Vice President, Retail Brokerage

**Oxford Realty Services, Inc.**

412.261.0200, ext 3436

adidonato@oxfordrealtyservices.com



One Oxford Centre

301 Grant Street - Suite 400

Pittsburgh, PA 15219

www.oxfordrealtyservices.com

Although all information furnished regarding property for sale, rental or financing is from sources deemed reliable, such information has not been verified, and no express representation is made nor is any to be implied as to the accuracy thereof, and it is submitted subject to errors, omissions, change of price, rental or other conditions, prior sale, lease or financing, or withdrawal without notice. Rental terms and all dimensions are approximate and specifications are subject to change without notice. Oxford Realty Services, Inc., an independent real estate services company.