

Towne Centre Offices - 1st Floor Retail Space

1789 South Braddock Avenue, Pittsburgh, PA 15218



Available

1,722 SF (1st Floor)

Property **Highlights**

- Conveniently located at the Edgewood/ Swissvale exit just off of the Parkway East (I-376)
- Adjacent to Edgewood Towne Centre Shopping Center with anchor tenants that include Giant Eagle, Kmart, CW Price, Planet Fitness & Burton's Total Pets
- Great for service and retail uses
- Ample free parking
- Signage available for strong Braddock Avenue exposure
- Out-parcels include Taco Bell, Wendy's, Applebee's, Eat 'n Park and PNC Bank



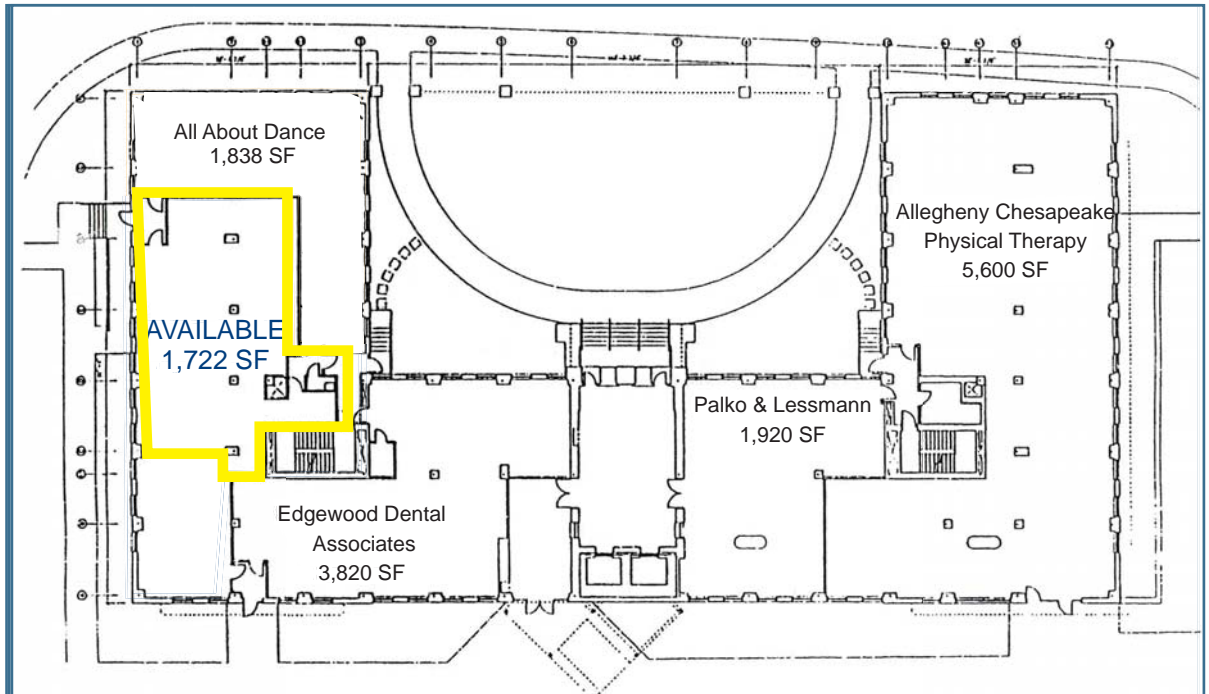
Demographics

Population:

- 3 Mile - 133,755
- 5 Mile - 310,730

Avg. Household Income:

- 3 Mile - \$65,880
- 5 Mile - \$59,386



For more information please contact:

Arthur J. DiDonato, Jr.
Senior Vice President, Retail Brokerage

Oxford Realty Services, Inc.

412.261.0200, ext 3436

adidonato@oxfordrealtyservices.com

OXFORD
REALTY SERVICES, INC.

One Oxford Centre

301 Grant Street - Suite 400

Pittsburgh, PA 15219

www.oxfordrealtyservices.com

Although all information furnished regarding property for sale, rental or financing is from sources deemed reliable, such information has not been verified, and no express representation is made nor is any to be implied as to the accuracy thereof, and it is submitted subject to errors, omissions, change of price, rental or other conditions, prior sale, lease or financing, or withdrawal without notice. Rental terms and all dimensions are approximate and specifications are subject to change without notice. Oxford Realty Services, Inc., an independent real estate services company.