

**NOW LEASING**



**1000 Integrity Drive | Pittsburgh, PA 15235**

**OXFORD**  
REALTY SERVICES, INC.

# PROPERTY DESCRIPTION

## BUILDING SIZE

42,177 RSF

## AVAILABLE PREMISES

### Second Floor

-1,981 RSF

-2,197 RSF

### Third Floor

-1,696 RSF

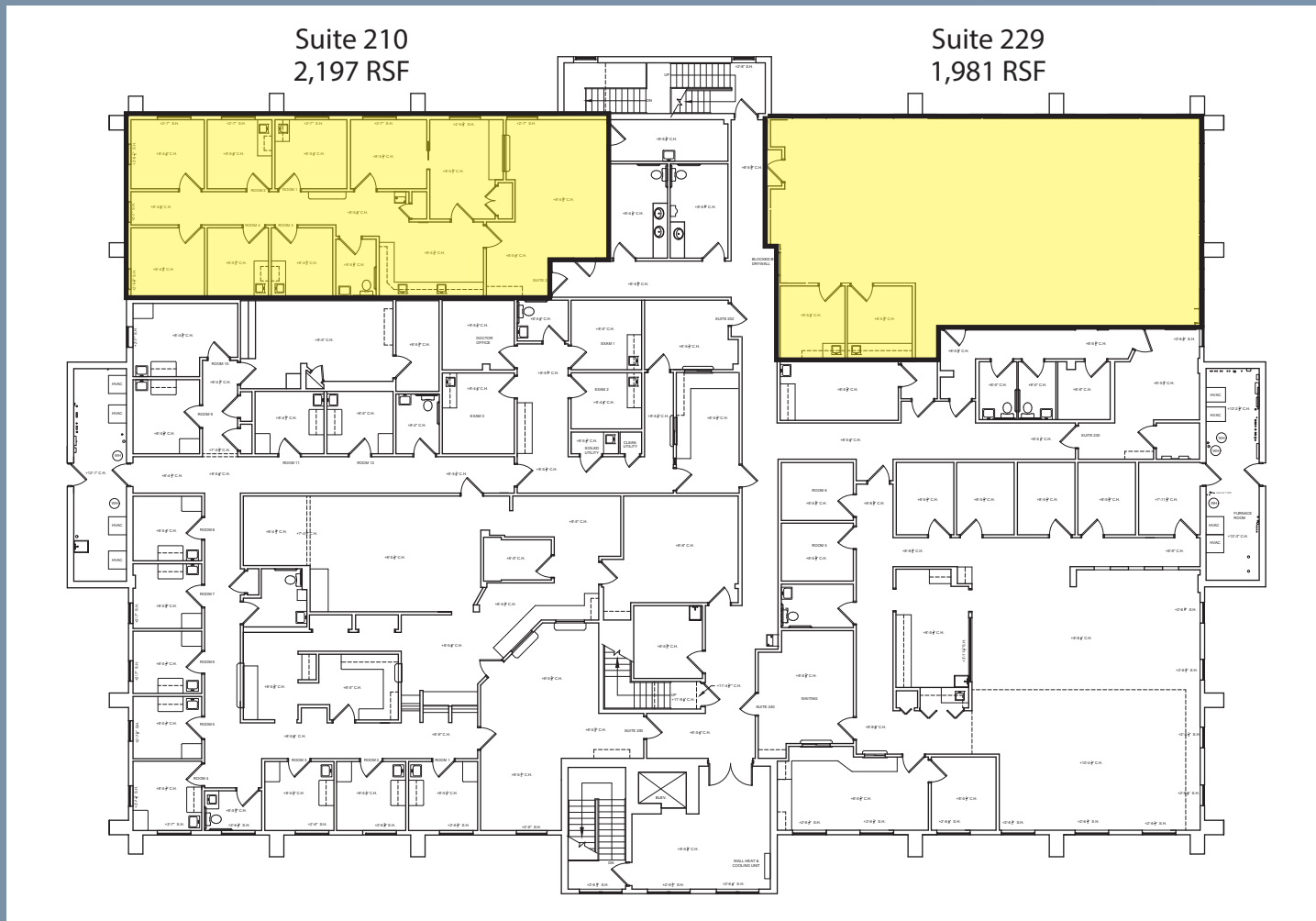
## PROPERTY HIGHLIGHTS

- Meticulously maintained medical office building with recent capital upgrades
- Located just off Rodi Road within the Penn Hills shopping and commercial corridor
- Within minutes of I-376, Route 22 and the PA Turnpike
- Abundant parking, with easy patient/client access



1000 INTEGRITY DRIVE

# FLOOR PLANS



## SECOND FLOOR

### Suite 210

- 4 Exam Rooms
- Large Lab Area
- Private Restroom
- Administration & Support Areas

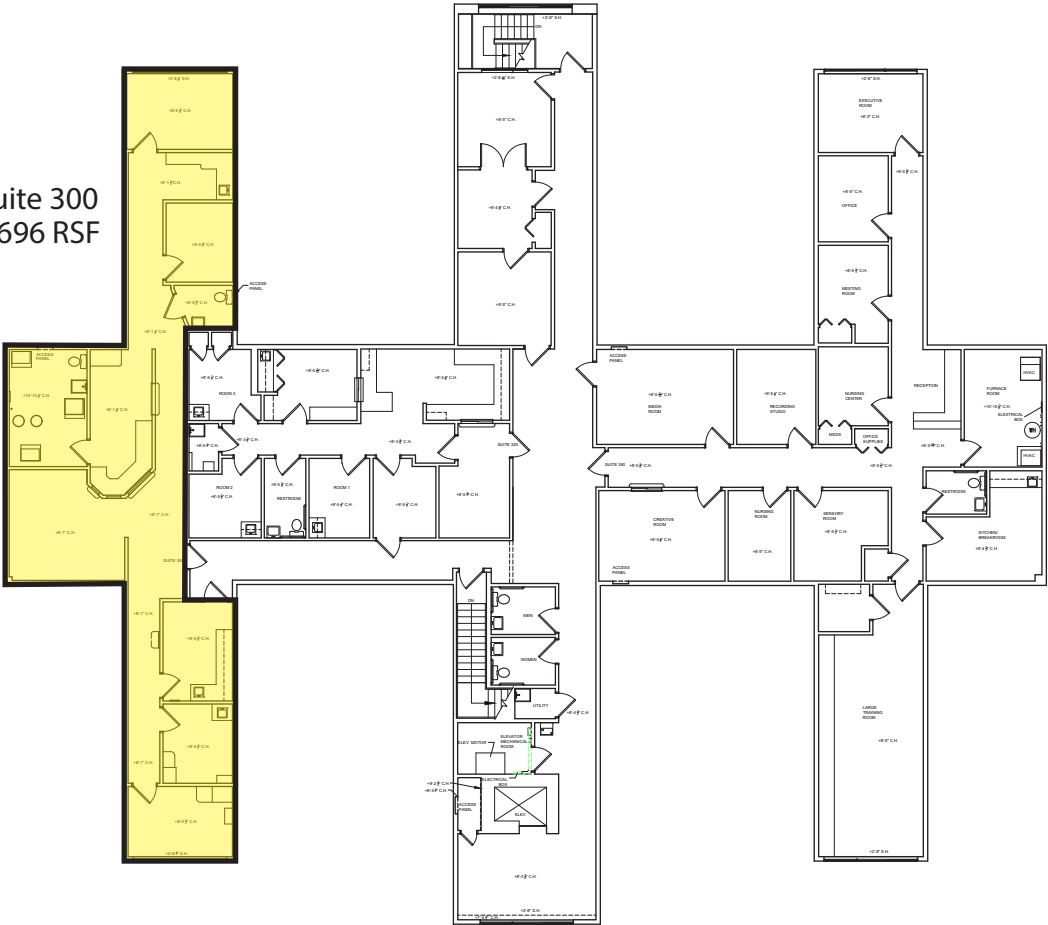
### Suite 229

- Customizable Shell Space

1000 INTEGRITY DRIVE

# FLOOR PLANS

Suite 300  
1,696 RSF



## THIRD FLOOR

- 3 Exam Rooms
- Private Restroom
- Administration & Support Areas

1000 INTEGRITY DRIVE

# PROPERTY PHOTOS

New Lobby Area



New Outdoor Gazebo



Existing Medical Support Space



Updated Common Corridors



Existing Exam Room



Existing Waiting Room



1000 INTEGRITY DRIVE



For more information please contact:

**Spencer Baker**  
Associate

412.261.0200, ext 3460  
sbaker@oxfordrealtyservices.com

**Joseph F. Tosi, SIOR**  
Executive Vice President

412.261.0200, ext 3471  
jtosi@oxfordrealtyservices.com

**Oxford Realty Services, Inc.**

2865 Railroad Street, Suite 202  
Pittsburgh, PA 15222  
www.oxfordrealtyservices.com

1000 Integrity Drive | Pittsburgh, PA 15235