



For more information please contact:

**Jeffrey A. Deitrick, SIOR**

Executive Vice President

**Oxford Realty Services, Inc.**

412.261.0200, ext 3473

jdeitrick@oxfordrealtyservices.com

**OXFORD**  
REALTY SERVICES, INC.

2545 Railroad Street - Suite 300

Pittsburgh, PA 15222

www.oxfordrealtyservices.com

Although all information furnished regarding property for sale, rental or financing is from sources deemed reliable, such information has not been verified, and no express representation is made nor is any to be implied as to the accuracy thereof, and it is submitted subject to errors, omissions, change of price, rental or other conditions, prior sale, lease or financing, or withdrawal without notice. Rental terms and all dimensions are approximate and specifications are subject to change without notice. Oxford Realty Services, Inc., an independent real estate services company.

**OXFORD**  
REALTY SERVICES, INC.

**FOR LEASE**

Real Estate Brokerage Services

Office | Industrial | Retail | Investing | Consulting

# 110 Fort Couch Road

Bethel Park, PA 15102



## Available Premises

### Ground Floor

- 750 RSF - Up to 2,004 RSF
- 600 RSF - Up to 1,850 RSF

### First Floor

- 2,288 RSF

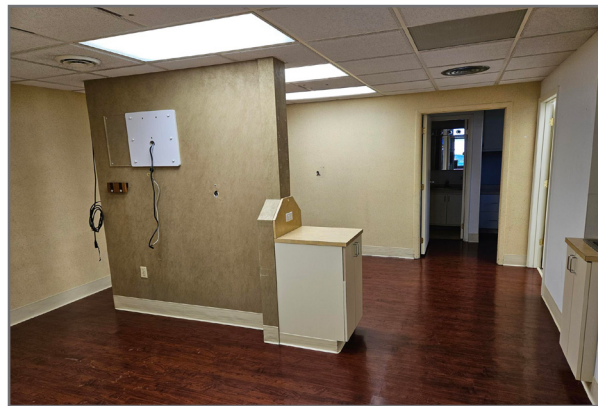
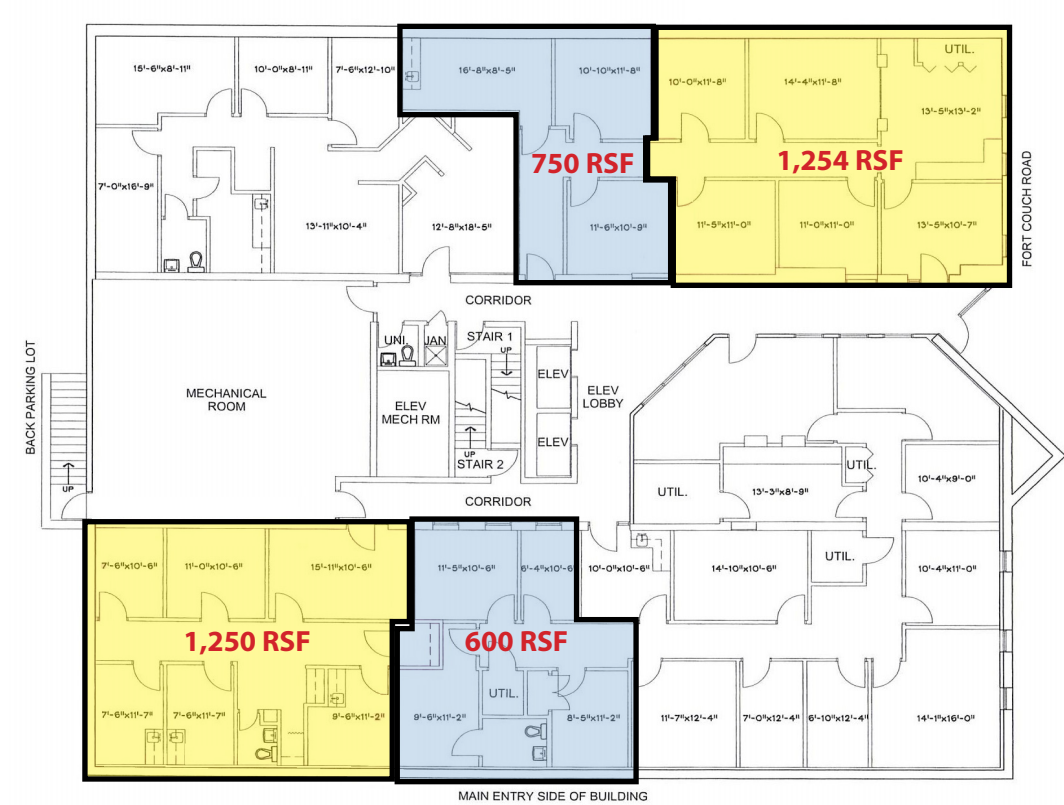
### Third Floor

- 714 RSF - Up to 1,872 RSF
- 1,702 RSF

## Property Highlights

- Premier location across from South Hills Village Mall offering all of the amenities of shopping, banking, restaurants and other retail
- Class "B" office building - with many upgrades
- Excellent access and visibility
- Free and abundant parking
- Monument signage opportunity
- Attractive full-service rates

## Ground Floor



### Third Floor

