

Located Adjacent to Settler’s Ridge with Direct Access to Steubenville Pike and Parkway West (I-376)



Grade Entrance Provided for Both Floors of the Building

Location Provides Great Visibility & Easy Access



OXFORD
REALTY SERVICES, INC.

2545 Railroad Street - Suite 300
Pittsburgh, PA 15222
www.oxfordrealtyservices.com

For more information please contact:

Jeffrey A. Deitrick, SIOR
Executive Vice President

Oxford Realty Services, Inc.
412.261.0200, ext 3473
jdeitrick@oxfordrealtyservices.com

Spencer L. Baker
Associate

Oxford Realty Services, Inc.
412.261.0200, ext 3460
sbaker@oxfordrealtyservices.com

Although all information furnished regarding property for sale, rental or financing is from sources deemed reliable, such information has not been verified, and no express representation is made nor is any to be implied as to the accuracy thereof, and it is submitted subject to errors, omissions, change of price, rental or other conditions, prior sale, lease or financing, or withdrawal without notice. Rental terms and all dimensions are approximate and specifications are subject to change without notice. Oxford Realty Services, Inc., an independent real estate services company.

OXFORD
REALTY SERVICES, INC.

FOR LEASE

Real Estate Brokerage Services

Office | Industrial | Retail | Investing | Consulting

Robinson Medical Center

133 Church Hill Road, McKees Rocks, PA 15136 (Robinson Township)



Available Premises

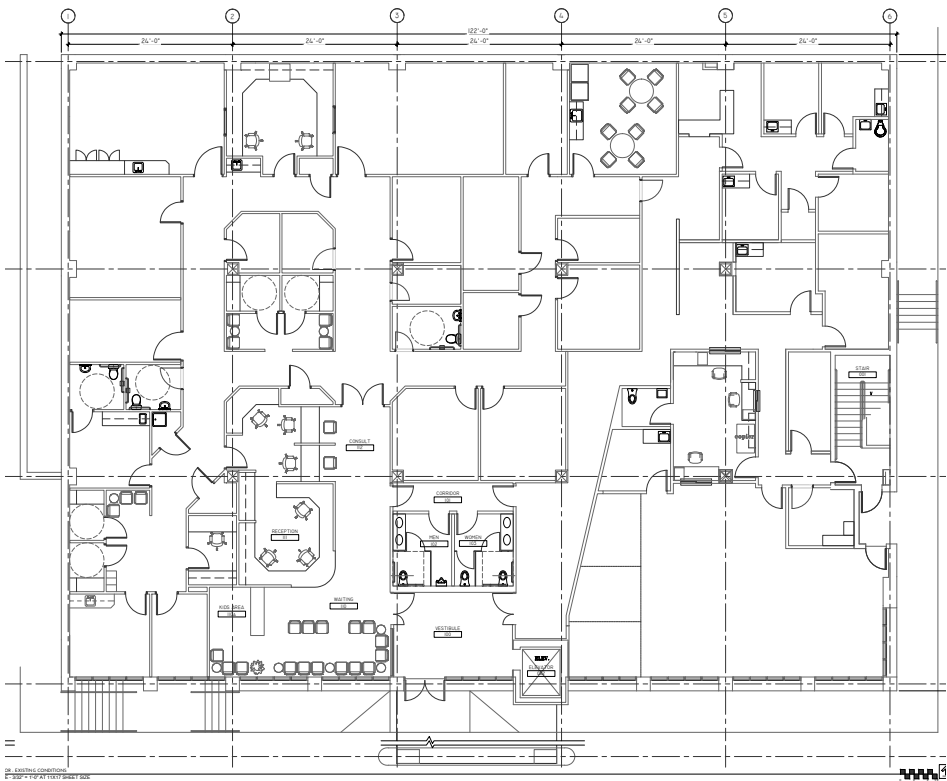
- 22,112 RSF - Entire Building
- 10,895 RSF - 1st Floor
- 10,895 RSF - 2nd Floor

Lease Rate

\$25.00-\$28.00/RSF + utilities and cleaning

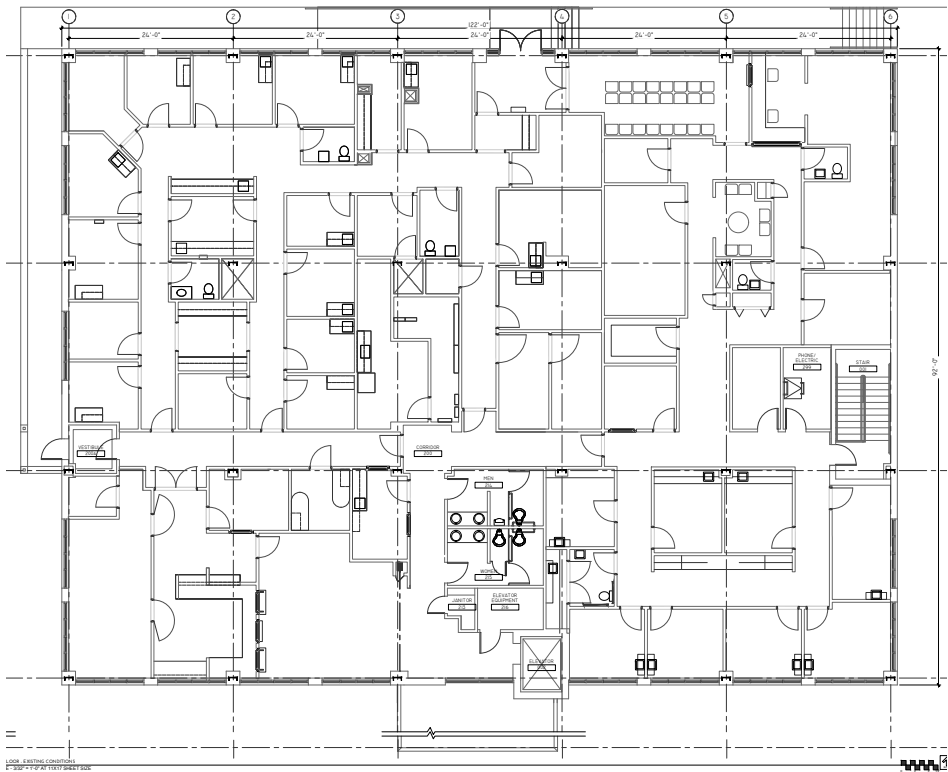
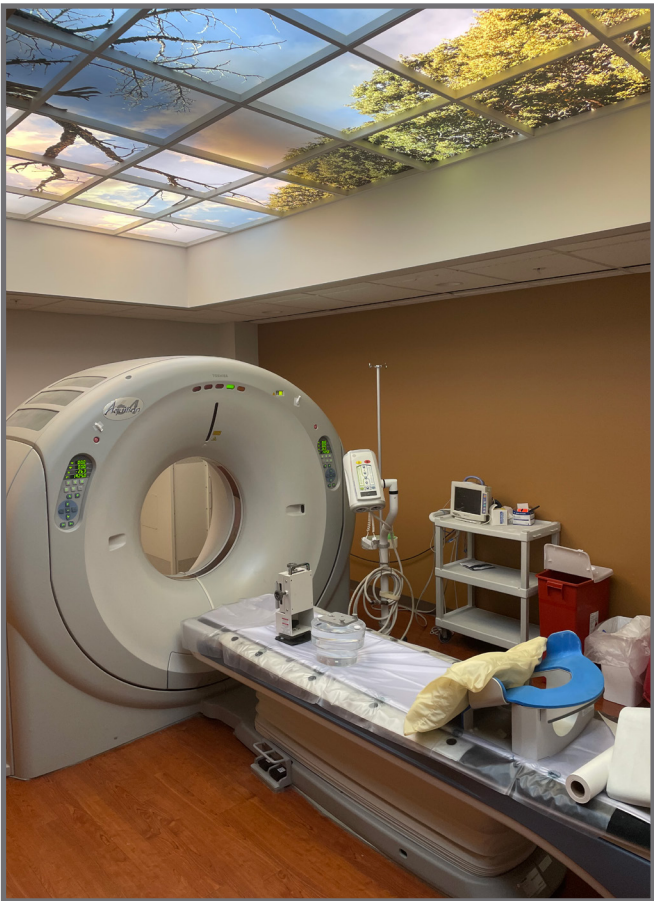
Property Highlights

- Highly specialized 2nd generation medical space
- Easy access / convenient location
- Located adjacent to major retail and amenities (Settler’s Ridge, Mall at Robinson, The Pointe at North Fayette)
- Abundant parking
- Exterior signage opportunities
- Potential sub-division of space
- Full ADA accessibility
- Imaging infrastructure in place (MRI and CT)



10,895 RSF - First Floor

- Currently demised into 3 Practices
- Each practice contains well designed / modern waiting areas
- Total of 15 exam rooms
- A complete PT / rehab gym
- Existing MRI / CT infrasture



10,895 RSF - Second Floor

- Currently demised into 2 Practices
- Each practice contains well designed / modern waiting areas
- Total of 30 exam rooms
- A complete x-ray / imaging suite
- Full lab / blood draw suite

