

## Squirrel Hill Rehabilitation Therapy/Medical Space

Pittsburgh, PA 15217



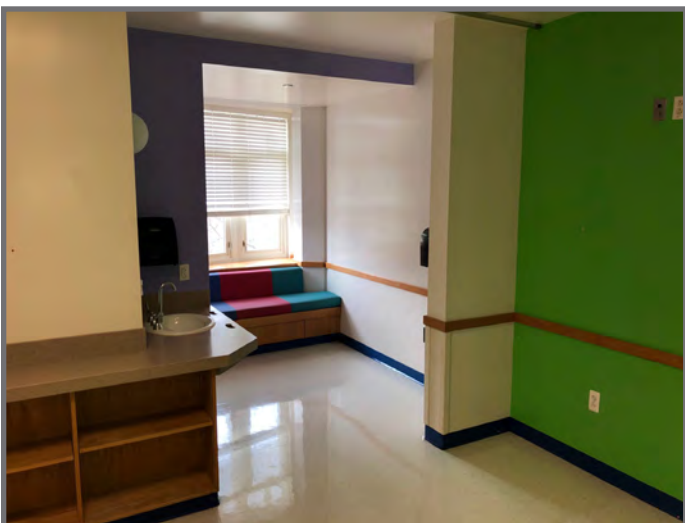
### Available **Premises**

#### 1405 Shady Avenue

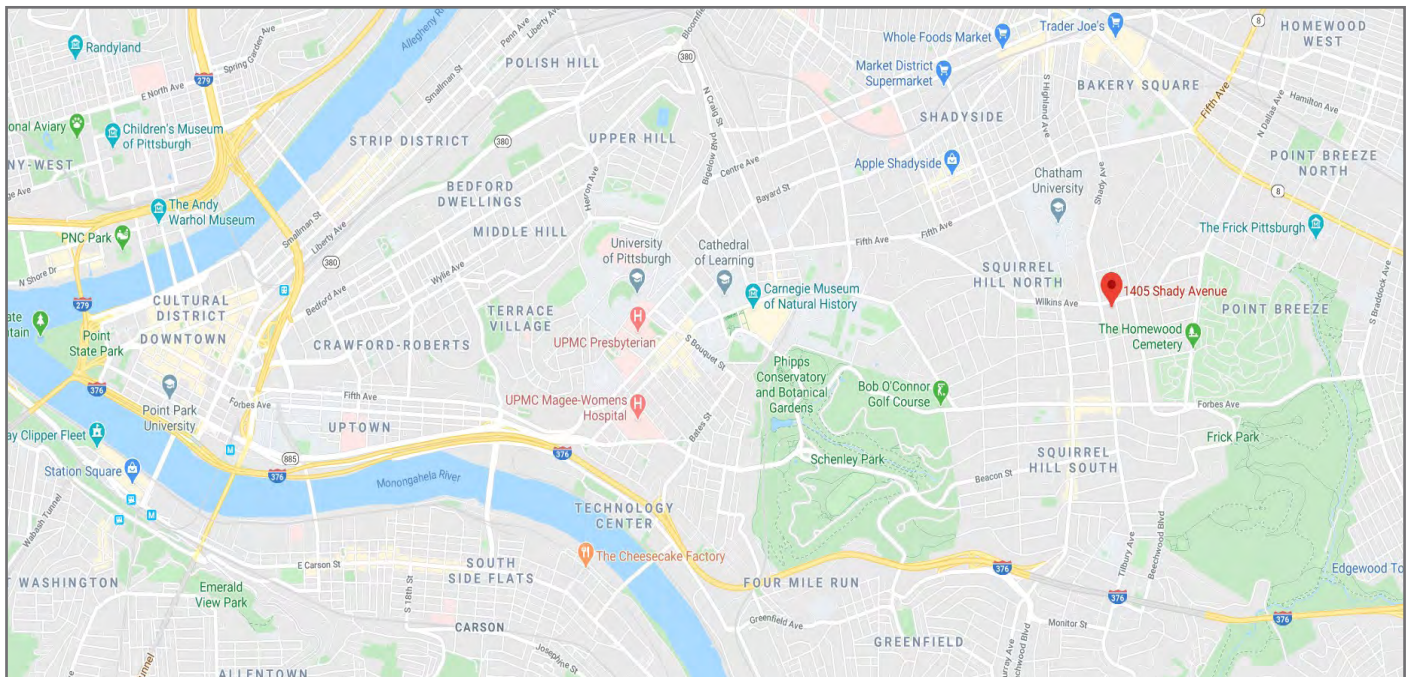
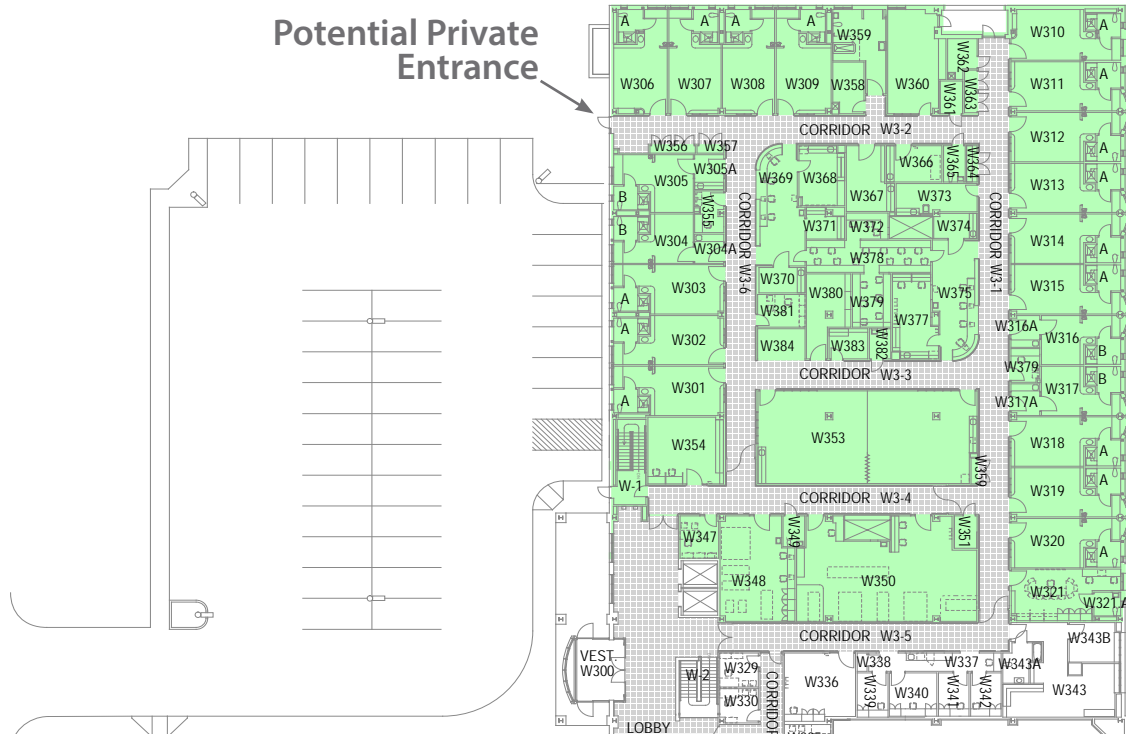
- 21,000 RSF - Within existing medical and rehabilitation facility

### Property **Highlights**

- Supervised residential opportunity with ample administrative space
- Second generation medical space
- 15 semi-private rooms with accessible bathrooms
- 4 isolation rooms with negative air pressure
- Parking is available
- Various existing therapy rooms
- Located on public transit line
- Potential private entrance







For more information please contact:

**Taylor N. Iaboni**

Associate

Oxford Realty Services, Inc.

412.261.0200, ext 3493

tiaboni@oxfordrealtyservices.com

**Spencer L. Baker**

Associate

Oxford Realty Services, Inc.

412.261.0200, ext 3460

sbaker@oxfordrealtyservices.com

# OXFORD

**REALTY SERVICES, INC.**

2545 Railroad Street - Suite 300

Pittsburgh, PA 15222

www.oxfordrealtyservices.com

Although all information furnished regarding property for sale, rental or financing is from sources deemed reliable, such information has not been verified, and no express representation is made nor is any to be implied as to the accuracy thereof, and it is submitted subject to errors, omissions, change of price, rental or other conditions, prior sale, lease or financing, or withdrawal without notice. Rental terms and all dimensions are approximate and specifications are subject to change without notice. Oxford Realty Services, Inc., an independent real estate services company.