

180 Murtland Avenue

Washington, Pennsylvania 15301

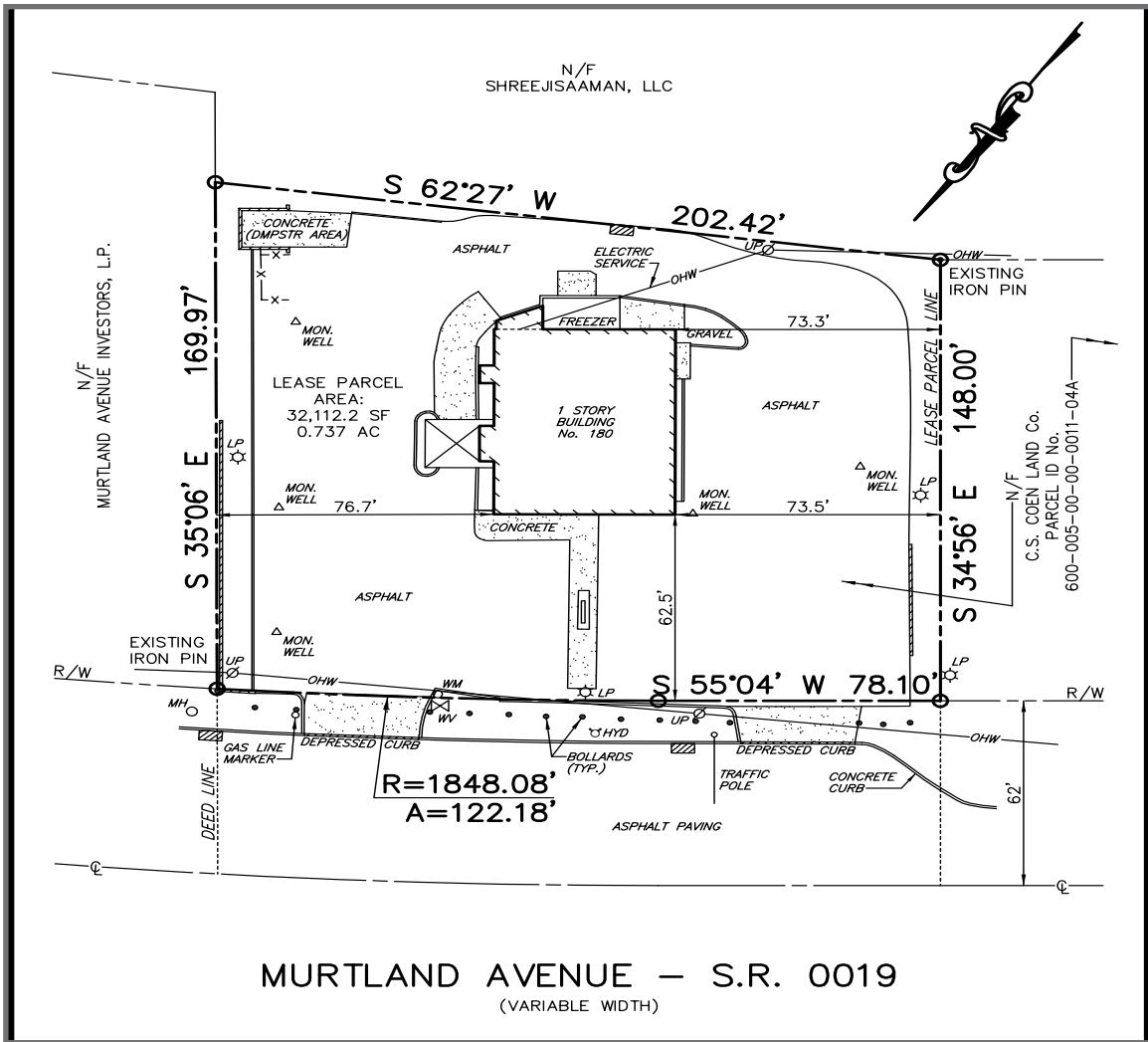


Available
Pad site with a building area of 3,100 sq. ft.
(approximately 50' x 62') and a Land Area
of approximately 32,000 sq. ft.

Property Highlights

- Ideally located on Murtland Avenue (Route 19), just off the I-70/I-79 interchange in Washington, PA
- Approximately 50 parking spaces
- Potential drive-thru capabilities
- In close proximity to Washington Mall, Trinity Point, Strabane Square, Northgate Plaza and The Foundry at South Strabane





AREA AVERAGE DAILY TRAFFIC		
I-70/I-79:	74,712	
Murtland Ave.:	27,982	
DEMOGRAPHICS		
	3-MILES	5-MILES
Population:	34,805	50,359
Avg. HH Income:	\$75,888	\$80,733

For more information please contact:

Arthur J. DiDonato, Jr.
 Senior Vice President, Retail Brokerage
Oxford Realty Services, Inc.
 412.261.0200, ext 3436
 adidonato@oxfordrealtyservices.com

OXFORD

REALTY SERVICES, INC.

2545 Railroad Street - Suite 300
 Pittsburgh, PA 15222
 www.oxfordrealtyservices.com

Although all information furnished regarding property for sale, rental or financing is from sources deemed reliable, such information has not been verified, and no express representation is made nor is any to be implied as to the accuracy thereof, and it is submitted subject to errors, omissions, change of price, rental or other conditions, prior sale, lease or financing, or withdrawal without notice. Rental terms and all dimensions are approximate and specifications are subject to change without notice. Oxford Realty Services, Inc., an independent real estate services company.