

## 2000 Oxford Drive

Bethel Park, PA 15102



### Available **Premises**

#### 4th Floor

- 698 RSF up to 3,868 RSF

#### 5th Floor

- 2,598 RSF
- 3,180 RSF
- 5,257 RSF

#### 6th Floor

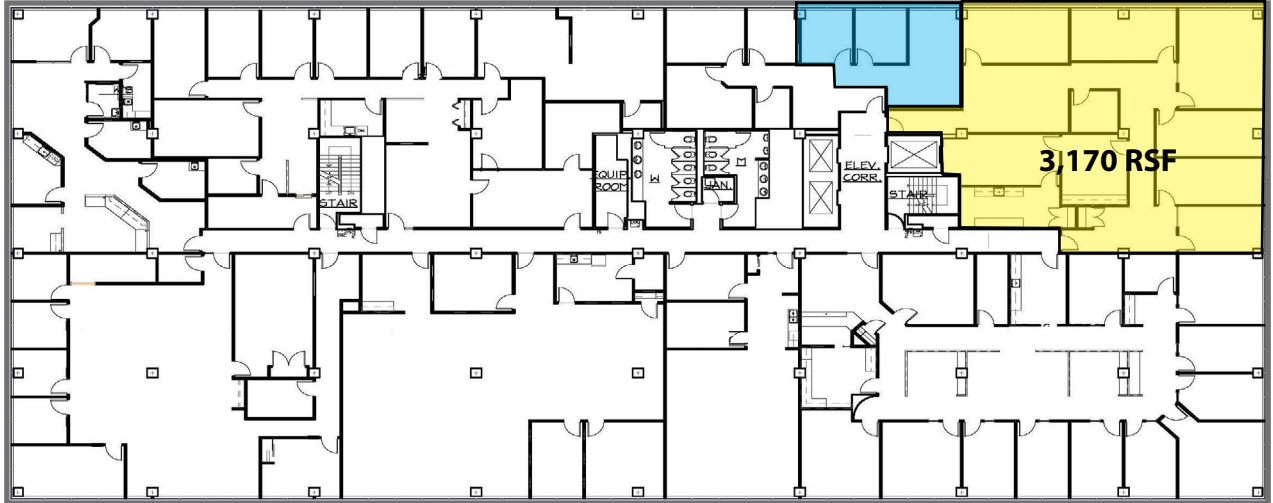
- 4,024 RSF

### Property **Highlights**

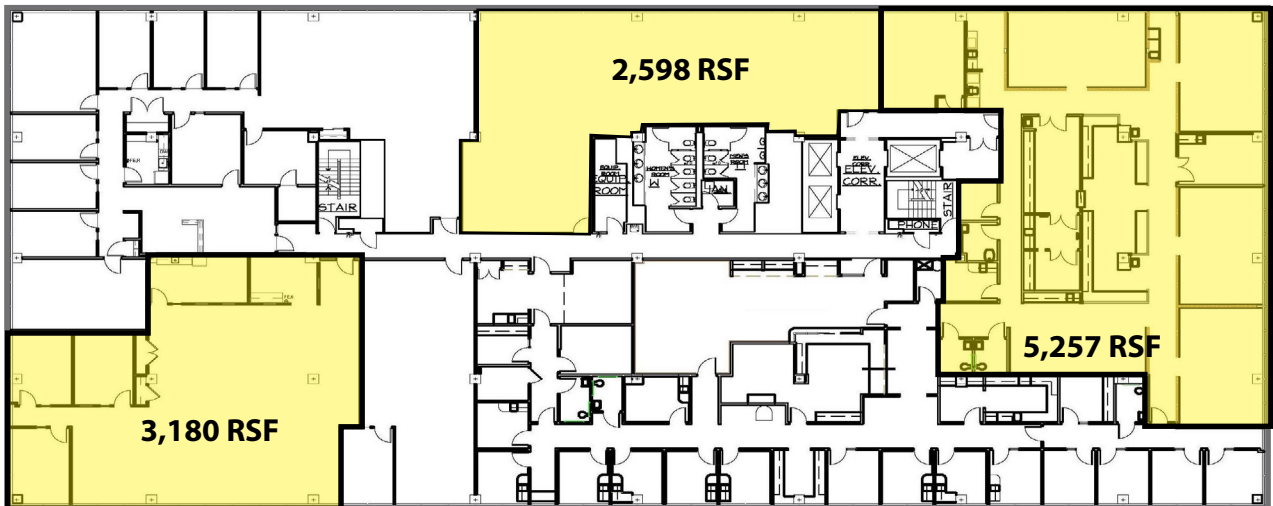
- Class "A" office building
- High end finishes throughout
- Banded glass providing ample light throughout
- On-site property management
- Monument signage opportunity
- Second generation medical space opportunities
- Excellent access and visibility, just steps from the South Hills Village and Village Square in the heart of the South Hills marketplace
- Many capital improvements scheduled for 2023

### 4th Floor

698 RSF



### 5th Floor



### 6th Floor





| AVERAGE DAILY TRAFFIC          |        |
|--------------------------------|--------|
| Fort Couch Road @ Oxford Drive | 25,446 |

For more information please contact:

**Jeffrey A. Deitrick, SIOR**  
Executive Vice President

**Oxford Realty Services, Inc.**  
412.261.0200, ext 3473  
jdeitrick@oxfordrealtyservices.com

**Spencer L. Baker**  
Associate

**Oxford Realty Services, Inc.**  
412.261.0200, ext 3460  
sbaker@oxfordrealtyservices.com

# OXFORD

**REALTY SERVICES, INC.**

2545 Railroad Street - Suite 300  
Pittsburgh, PA 15222  
www.oxfordrealtyservices.com

Although all information furnished regarding property for sale, rental or financing is from sources deemed reliable, such information has not been verified, and no express representation is made nor is any to be implied as to the accuracy thereof, and it is submitted subject to errors, omissions, change of price, rental or other conditions, prior sale, lease or financing, or withdrawal without notice. Rental terms and all dimensions are approximate and specifications are subject to change without notice. Oxford Realty Services, Inc., an independent real estate services company.