

**NOW LEASING**



**2000 Oxford Drive | Bethel Park, PA 15102**



# PROPERTY DESCRIPTION

## BUILDING SIZE

138,057 RSF

## AVAILABLE PREMISES

<u>4th Floor</u>	<u>5th Floor</u>	<u>6th Floor</u>
-3,868 RSF	-2,598 RSF	-4,024 RSF
	-3,180 RSF	
	-3,806 RSF	

## PROPERTY HIGHLIGHTS

- Class "A" office building
- High end finishes throughout
- Banded glass providing ample light throughout
- On-site property management
- Monument signage opportunity
- Many recent capital improvements
- Second generation medical space opportunities
- Excellent access and visibility, just steps from the South Hills Village and Village Square in the heart of the South Hills marketplace

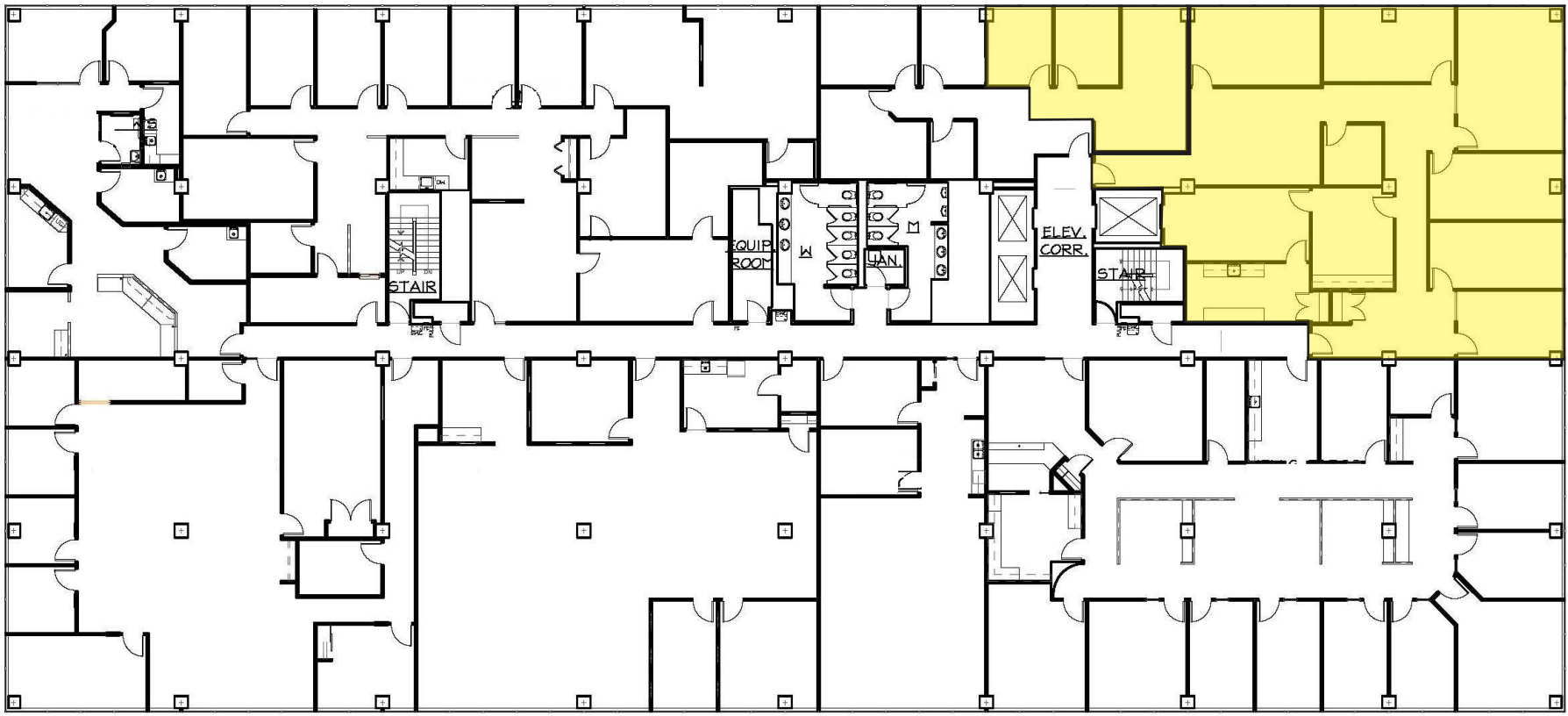


2000 OXFORD DRIVE

# FLOOR PLANS

## 4th FLOOR

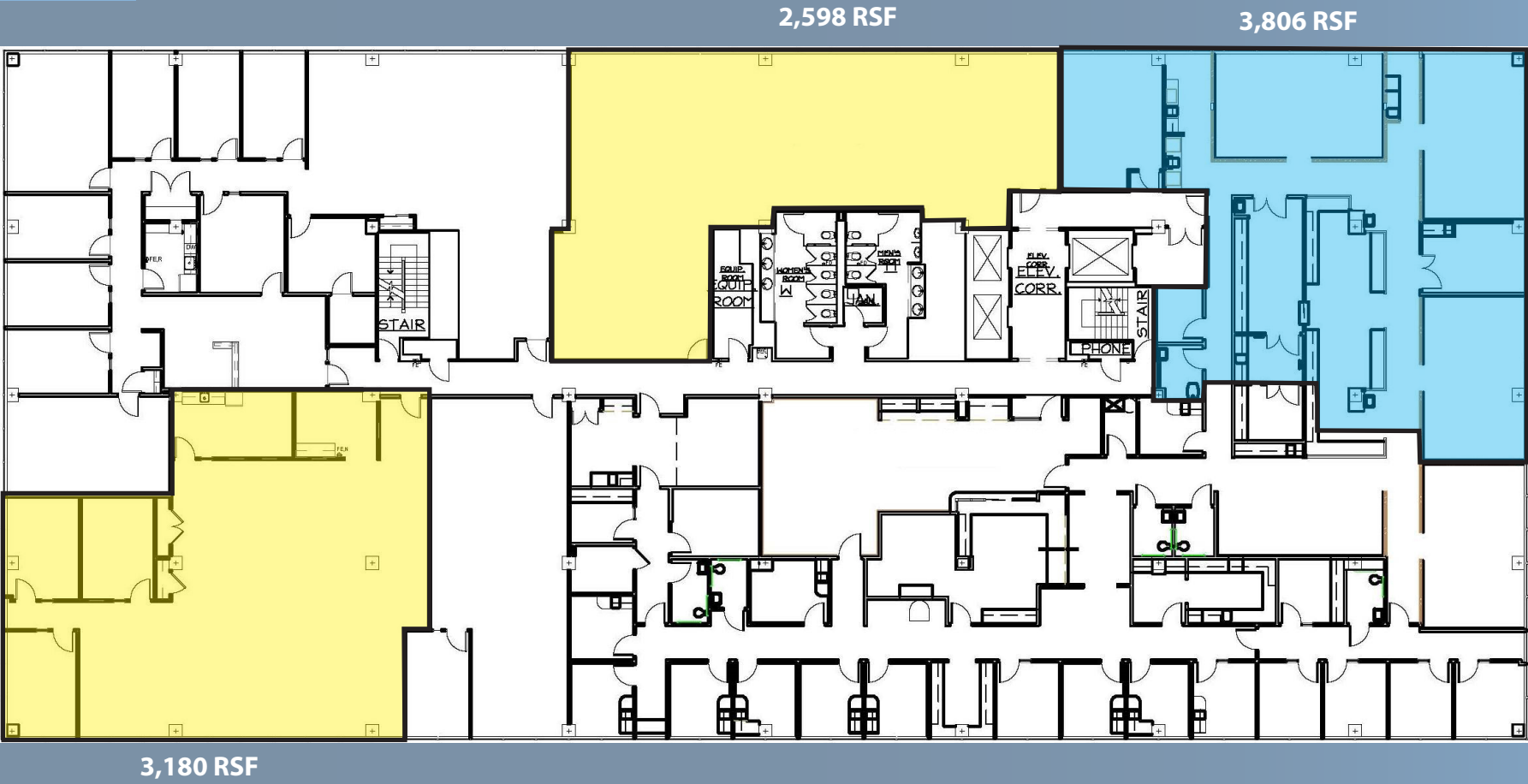
3,868 RSF



2000 OXFORD DRIVE

# FLOOR PLANS

## 5th FLOOR



2000 OXFORD DRIVE

# FLOOR PLANS

## 6th FLOOR

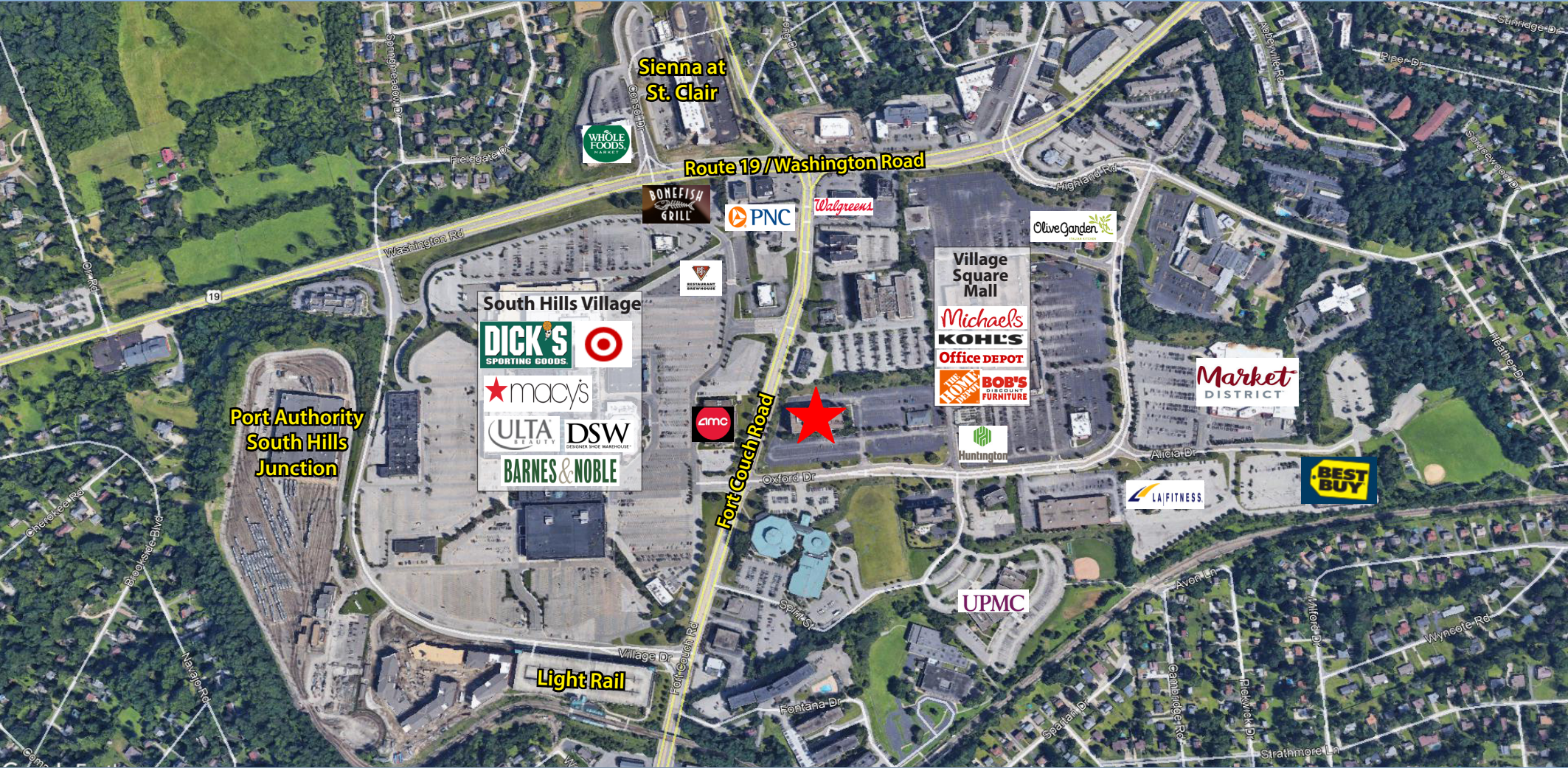
4,024 RSF



2000 OXFORD DRIVE



# PROPERTY LOCATION



2000 OXFORD DRIVE



For more information please contact:

**Spencer Baker**

Associate

412.261.0200, ext 3460

sbaker@oxfordrealtyservices.com

**Joseph F. Tosi, SIOR**

Executive Vice President

412.261.0200, ext 3471

jtosi@oxfordrealtyservices.com

**Oxford Realty Services, Inc.**

2545 Railroad Street

Pittsburgh, PA 15222

www.oxfordrealtyservices.com

2000 Oxford Drive | Bethel Park, PA 15102