

Real Estate Brokerage Services

Office | Industrial | Retail | Investing | Consulting

## 2125 Jane Street

Pittsburgh, PA 15203



### Building Size

12,000 RSF

### Available Premises

4,000 SF up to 8,000 SF

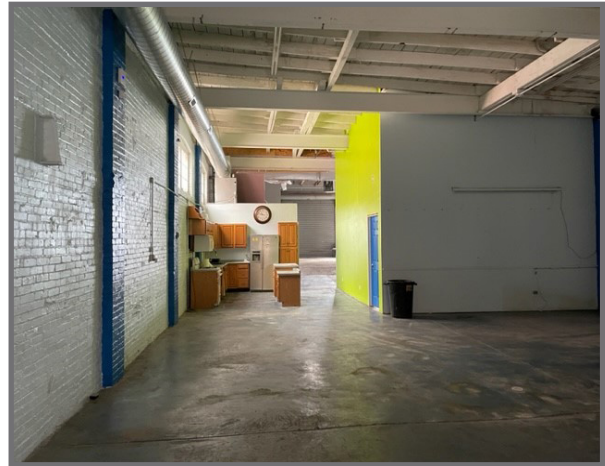
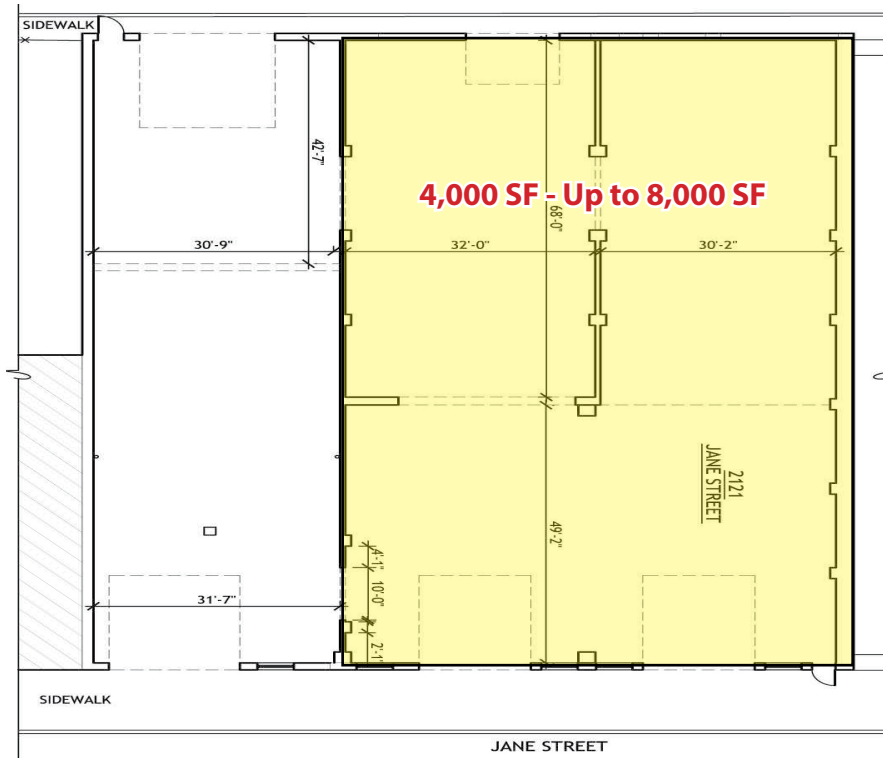
### Lease Rate

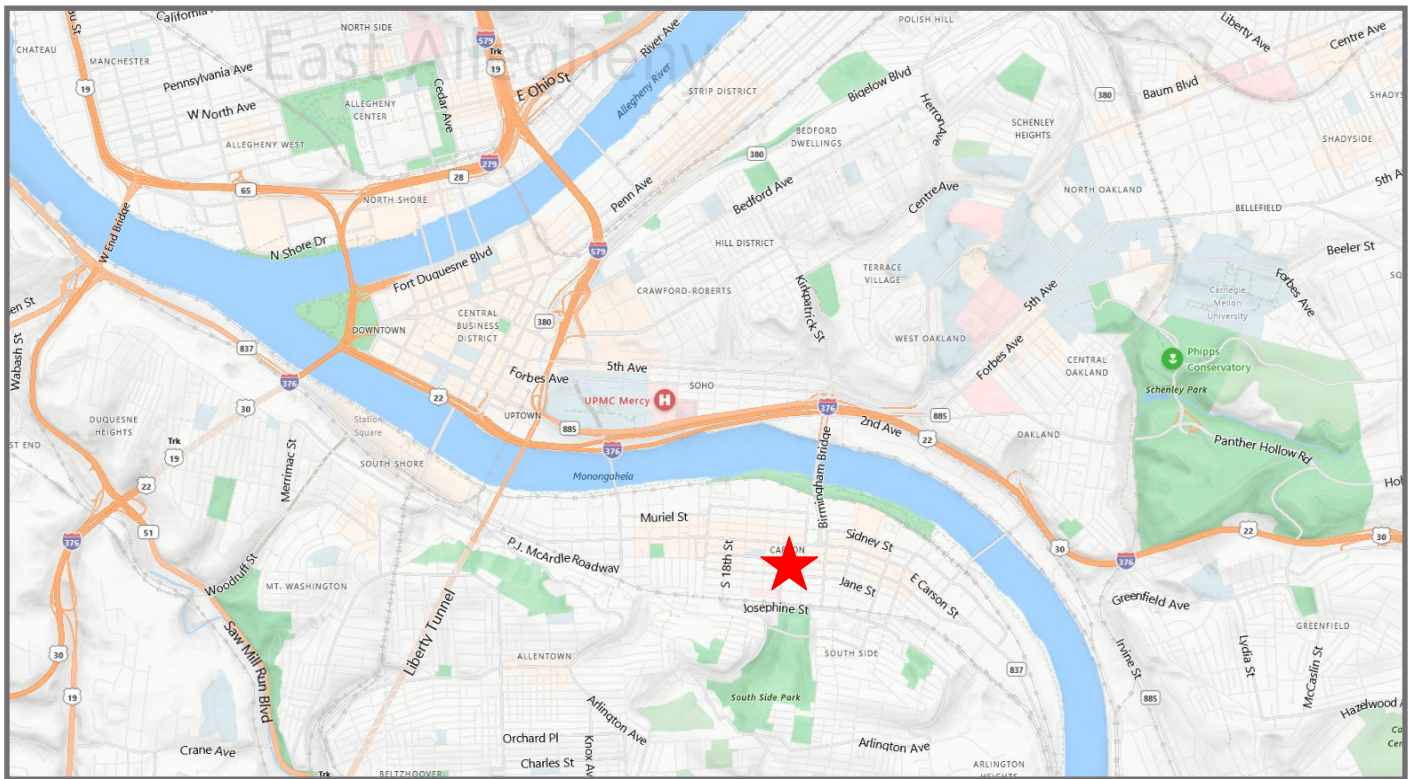
\$10.00 - \$12.00/SF NNN

### Property Highlights

- 3 grade level doors (12' x 12')
- 18' clear ceiling height
- Finished loft style office area
- Convenient location, just off East Carson Street with off-street parking for 6 vehicles, plus ample street parking







For more information please contact:

**Joe Tosi, SIOR**  
Senior Vice President

**Oxford Realty Services, Inc.**  
412.261.0200, ext 3471  
jtosi@oxfordrealtyservices.com

**Spencer L. Baker**  
Associate

**Oxford Realty Services, Inc.**  
412.261.0200, ext 3460  
sbaker@oxfordrealtyservices.com

**OXFORD**  
REALTY SERVICES, INC.

2545 Railroad Street - Suite 300  
Pittsburgh, PA 15222  
www.oxfordrealtyservices.com

Although all information furnished regarding property for sale, rental or financing is from sources deemed reliable, such information has not been verified, and no express representation is made nor is any to be implied as to the accuracy thereof, and it is submitted subject to errors, omissions, change of price, rental or other conditions, prior sale, lease or financing, or withdrawal without notice. Rental terms and all dimensions are approximate and specifications are subject to change without notice. Oxford Realty Services, Inc., an independent real estate services company.