

**NOW LEASING**



**2600 Old Washington Road | Pittsburgh, PA 15241**



# PROPERTY DESCRIPTION

## BUILDING SIZE

21,500 RSF

## AVAILABLE PREMISES

### Second Floor

- 2,128 RSF - Traditional Office Space

## PROPERTY HIGHLIGHTS

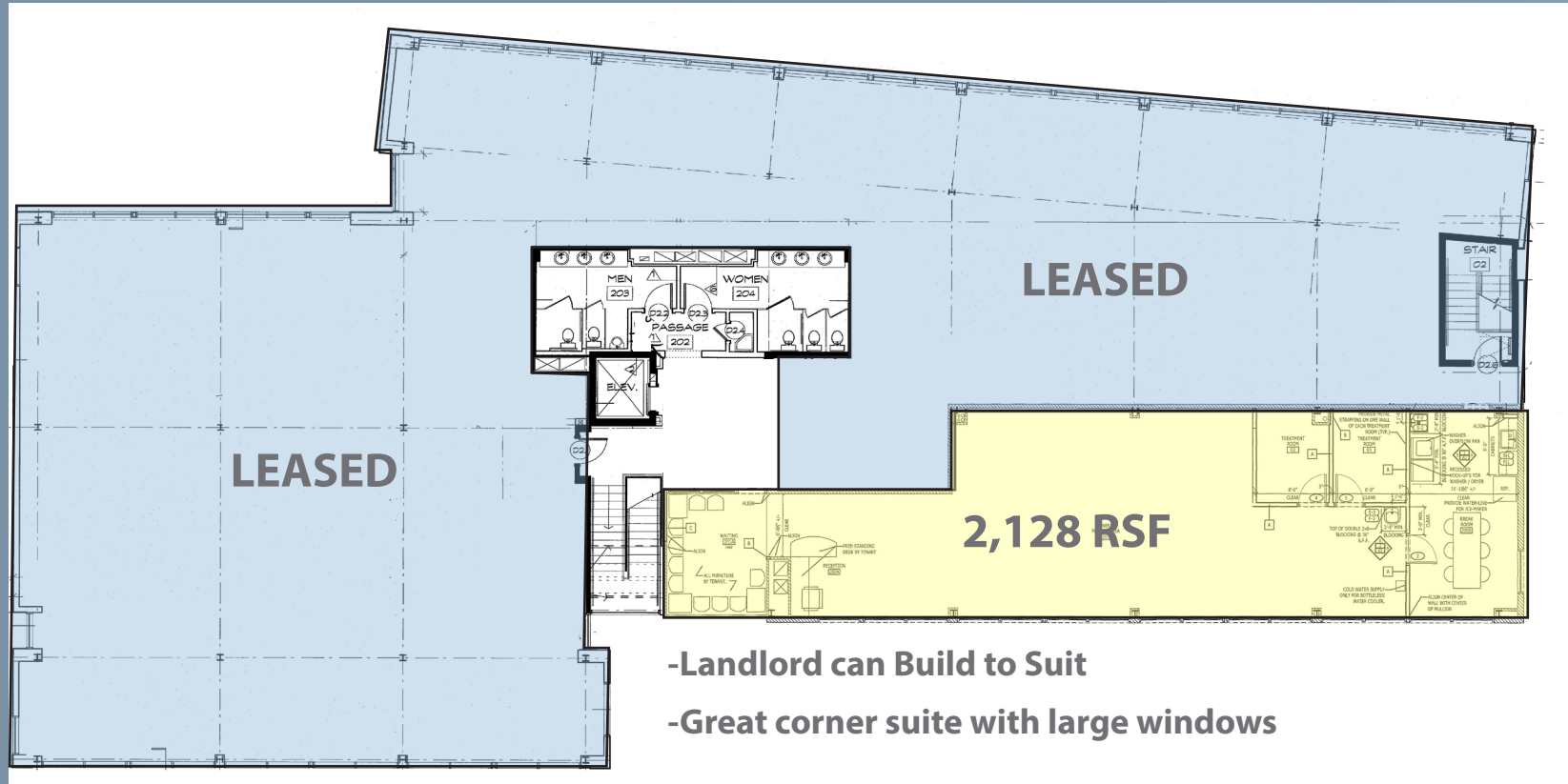
- Conveniently located at the intersection of Boyce Road and Route 19
- Minutes from South Hills Village Mall and Donaldson's Crossroads
- Many amenities nearby
- Class "A" finishes with high ceilings
- Large windows provide natural light throughout
- Abundant free parking available
- Exterior signage and monument signage available



2600 OLD WASHINGTON ROAD

# FLOOR PLANS

## 2<sup>nd</sup> FLOOR



- Landlord can Build to Suit
- Great corner suite with large windows

2600 OLD WASHINGTON ROAD



# SUITE/PROPERTY PHOTOS

Suite Entrance



Lounge/Breakroom Area



Large Open Space



Large Open Space



Building Identification



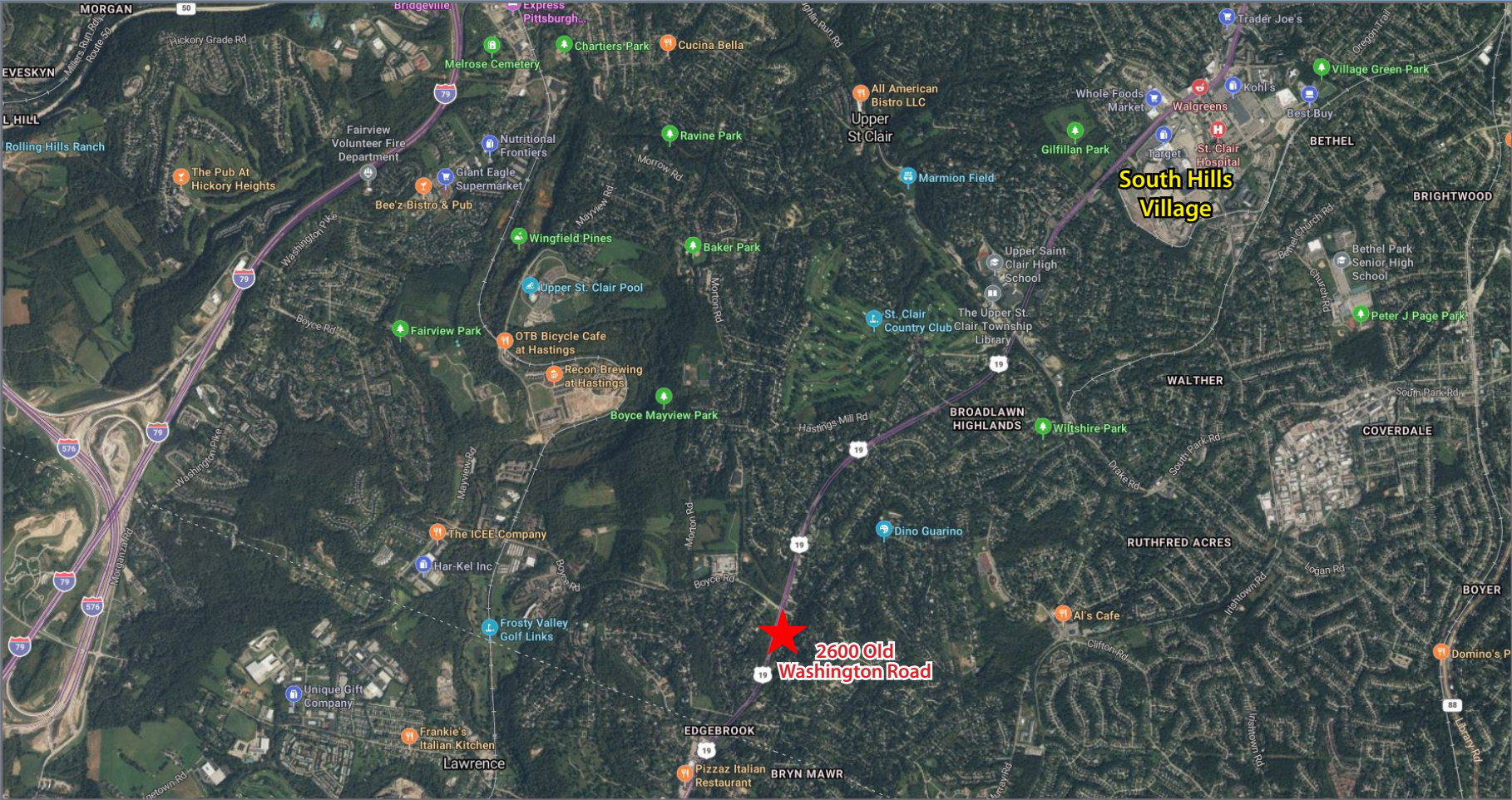
Pylon Signage



2600 OLD WASHINGTON ROAD



# PROPERTY LOCATION



2600 OLD WASHINGTON ROAD



For more information please contact:

**Andrew Martz**

Associate

412.261.0200, ext 3486

[amartz@oxfordrealtyservices.com](mailto:amartz@oxfordrealtyservices.com)

**Oxford Realty Services, Inc.**

2545 Railroad Street

Pittsburgh, PA 15222

[www.oxfordrealtyservices.com](http://www.oxfordrealtyservices.com)



2600 Old Washington Road | Pittsburgh, PA 15241