

Abundant Parking



New Building Entry and Lobby



For more information please contact:

**Jeffrey A. Deitrick, SIOR**  
Executive Vice President

**Oxford Realty Services, Inc.**  
412.261.0200, ext 3473  
jdeitrick@oxfordrealtyservices.com

**Andrew Martz**  
Associate

**Oxford Realty Services, Inc.**  
412.261.0200, ext 3463  
amartz@oxfordrealtyservices.com

Although all information furnished regarding property for sale, rental or financing is from sources deemed reliable, such information has not been verified, and no express representation is made nor is any to be implied as to the accuracy thereof, and it is submitted subject to errors, omissions, change of price, rental or other conditions, prior sale, lease or financing, or withdrawal without notice. Rental terms and all dimensions are approximate and specifications are subject to change without notice. Oxford Realty Services, Inc., an independent real estate services company.

**OXFORD**  
REALTY SERVICES, INC.

2545 Railroad Street - Suite 300  
Pittsburgh, PA 15222  
www.oxfordrealtyservices.com

**OXFORD**  
REALTY SERVICES, INC.

Real Estate Brokerage Services

Office | Industrial | Retail | Investing | Consulting

**2644 Banksville Road**  
Pittsburgh, PA 15216



**Building Size**

28,050 SF

**Available Premises**

9,350 SF - Entire Third Floor

**Asking Rate**

\$19.00 - \$21.00/SF + Electric & Janitorial

**Inquire About Aggressive  
Free Rent / Incentive Packages**

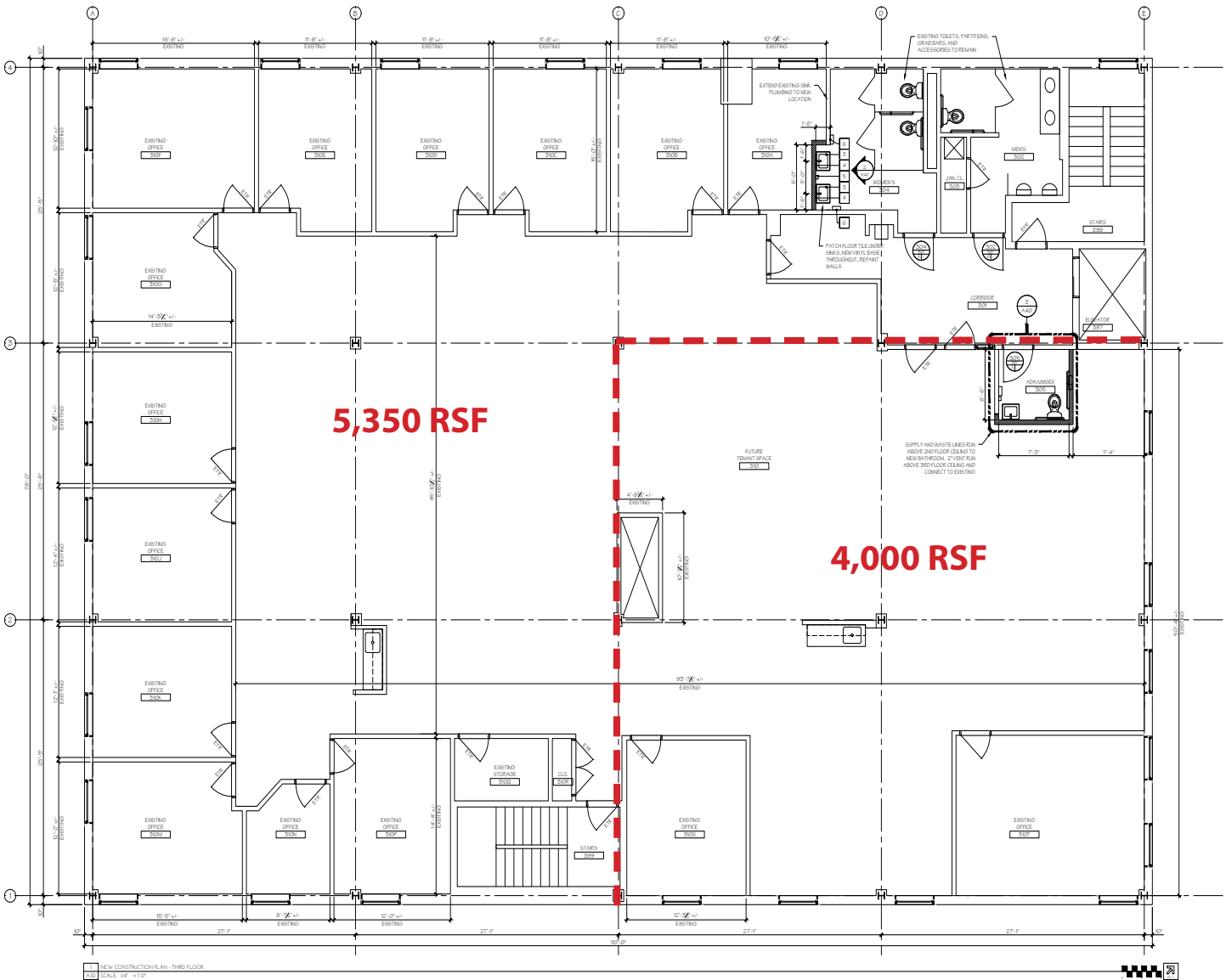
**Property Highlights**

- Space can be subdivided to 4,000 SF or 5,350 SF
- Up to 6:1 parking available
- New building entry with all new lobby finishes
- Exterior signage available
- Private patio and outdoor break area
- Crafton Children's Corner daycare located on the 1st floor and Family Links located on the 2nd floor
- Turnkey construction
- Located by numerous amenities and only minutes to Downtown Pittsburgh
- 25,395 Vehicles Daily - Banksville Road
- Skylights and large windows throughout
- Ability to provide exposed ceilings, ductwork and suspended lighting





Floor To Be Fully Renovated - Tenant to Select Layout, Design & Finishes



--- Indicates approximate subdivision

