



East End Retail

- 1 Giant Eagle Market District
- 2 Aldi's
- 3 Rite Aid
- 4 Whole Foods
- 5 Walgreens
- 6 Giant Eagle
- 7 Target
- 8 CVS
- 9 The Home Depot
- 10 Spoon
- 11 BRGR
- 12 Panera Bread
- 13 The Village at Eastside
- 14 Bakery Square
- 15 Walnut Street Retail
- 16 The Junction of Bloomfield

East End Residential

- 1 **Morrow Park Apartments**
213 Residential Units
- 2 **Penn at Walnut on Highland**
78 Residential Units
16,000 SF Retail
- 3 **Eastside III**
364 Residential Units
43,000 SF Retail
- 4 **Bakery Square 2.0**
400 Residential Units
- 5 **CODA on Centre**
175 Residential Units

East End Hospitality

- 1 **HYATT House**
128 Rooms
- 2 **Family House**
136 Rooms
- 3 **Ace Hotel**
63 Rooms

East End Health Care

- 1 UPMC Shadyside Hospital
- 2 Hillman Cancer Center
- 3 West Penn Hospital
- 4 Children's Hospital of Pittsburgh of UPMC

East End Office and Retail

- 1 **Bakery Square 2.0**
400,000 SF Office
- 2 **Aldi**
Office Space
- 3 **East Liberty Centre**
60,000 SF Office/20,000 SF Retail
- 4 **Schoolhouse Electric and Supply Co.**
63,000 SF Retail

For more information please contact:

Arthur J. DiDonato, Jr.
Senior Vice President - Retail Brokerage

Oxford Realty Services, Inc.
412.261.0200, ext 3436
adidonato@oxfordrealtyservices.com

Alec M. Parchinski
Associate

Oxford Realty Services, Inc.
412.261.0200, ext 3485
aparchinski@oxfordrealtyservices.com

OXFORD
REALTY SERVICES, INC.

2545 Railroad Street
Pittsburgh, PA 15222
www.oxfordrealtyservices.com

Although all information furnished regarding property for sale, rental or financing is from sources deemed reliable, such information has not been verified, and no express representation is made nor is any to be implied as to the accuracy thereof, and it is submitted subject to errors, omissions, change of price, rental or other conditions, prior sale, lease or financing, or withdrawal without notice. Rental terms and all dimensions are approximate and specifications are subject to change without notice. Oxford Realty Services, Inc., an independent real estate services company.

OXFORD
REALTY SERVICES, INC.

Real Estate Brokerage Services

**Available for
Ground Lease**

Office | Industrial | Retail | Investing | Consulting

5401 Baum Boulevard
Pittsburgh, PA 15232



Site Size

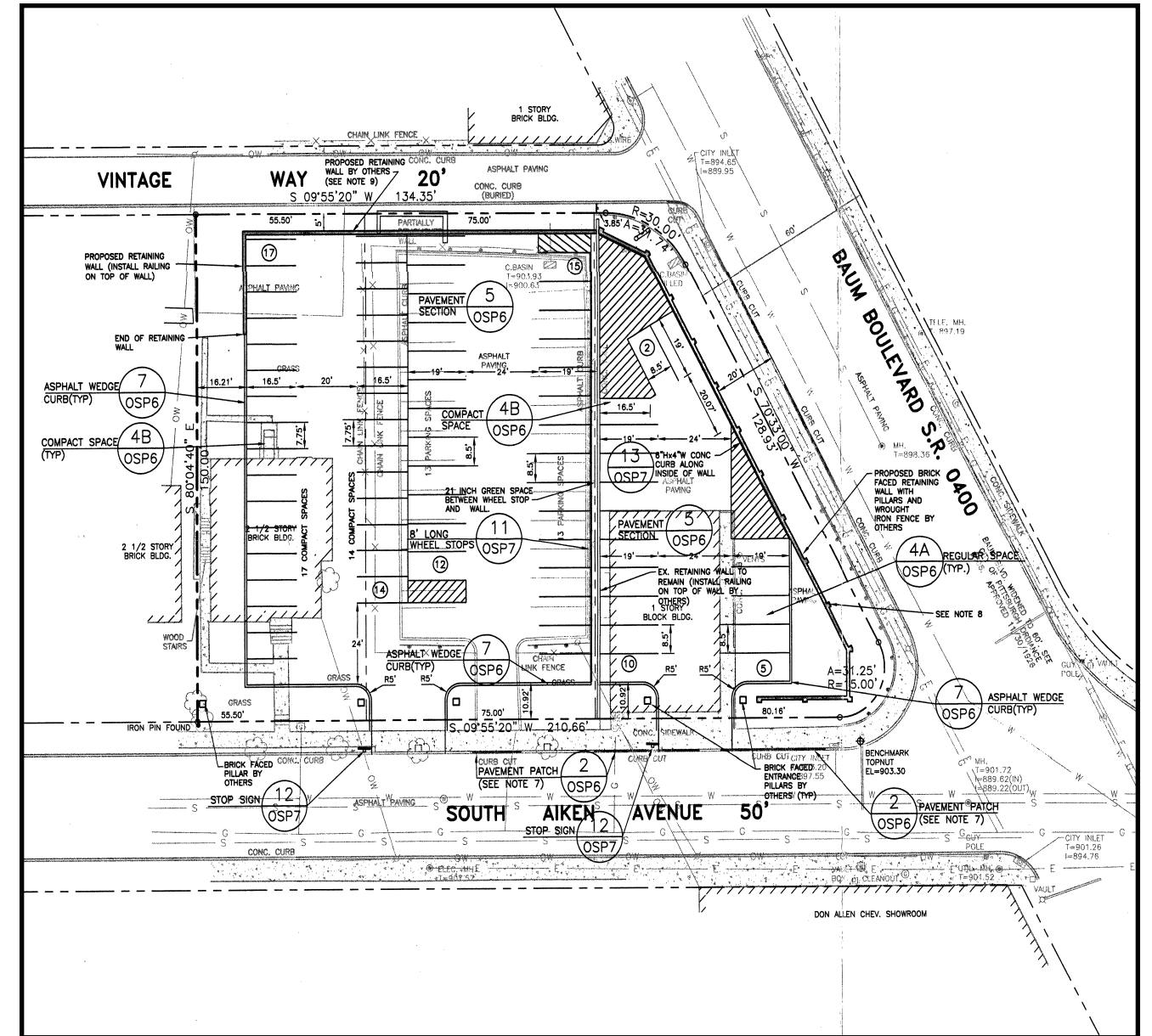
Approx. 27,500 SF or 0.63 Acres

Parcel ID

51-L-190
51-L-194
51-L-198
(Allegheny County)

Property Highlights

- Located at the signalized intersection of Baum Boulevard and South Aiken Avenue, the property is currently operating as a parking lot and is fully improved with utilities and paving, ready for further building improvements and development.
- The area has experienced monumental economic growth over the past decade including the new Junction of Bloomfield retail complex.
- UPMC Shadyside Hospital is located 2 blocks away, along with The Hillman Cancer Center and minutes from the Children's Hospital and West Penn Hospital. Also in close proximity to the hotel is the University of Pittsburgh and Carnegie Mellon University.



DEMOGRAPHICS

	1-MILE	3-MILE	5-MILE
Population	39,376	174,876	333,802
Avg HH Income	\$77,125	\$79,594	\$77,929