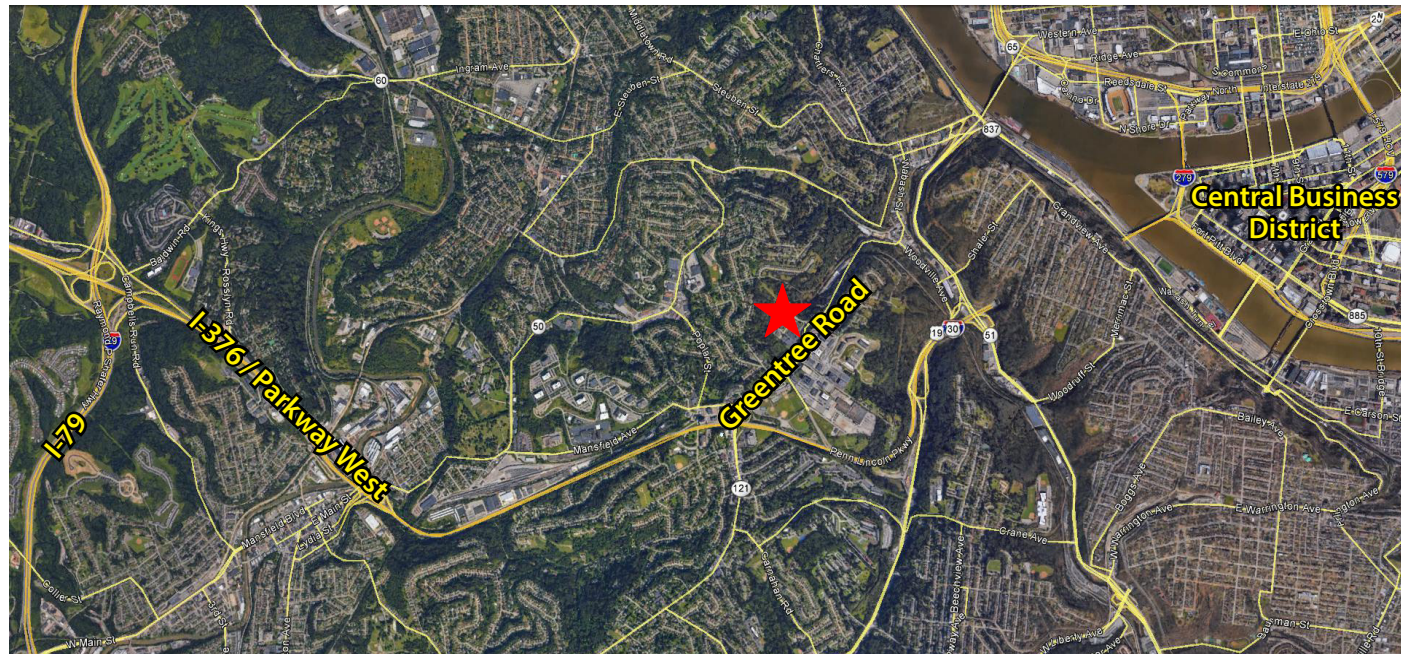


Lobby Entrance



Exterior Break Area



For more information please contact:

Joseph F. Tosi, SIOR

Senior Vice President

Oxford Realty Services, Inc.

412.261.0200, ext 3471

jtosi@oxfordrealtyservices.com

OXFORD

REALTY SERVICES, INC.

2545 Railroad Street - Suite 300

Pittsburgh, PA 15222

www.oxfordrealtyservices.com

Although all information furnished regarding property for sale, rental or financing is from sources deemed reliable, such information has not been verified, and no express representation is made nor is any to be implied as to the accuracy thereof, and it is submitted subject to errors, omissions, change of price, rental or other conditions, prior sale, lease or financing, or withdrawal without notice. Rental terms and all dimensions are approximate and specifications are subject to change without notice. Oxford Realty Services, Inc., an independent real estate services company.

OXFORD

REALTY SERVICES, INC.

FOR LEASE

Real Estate Brokerage Services

Office | Industrial | Retail | Investing | Consulting

900 Parish Street

Pittsburgh, PA 15220



Building Size

37,015 RSF

Available Premises

10,472 RSF - 2nd Floor

1,584 RSF - 3rd Floor

2,268 RSF - 3rd Floor

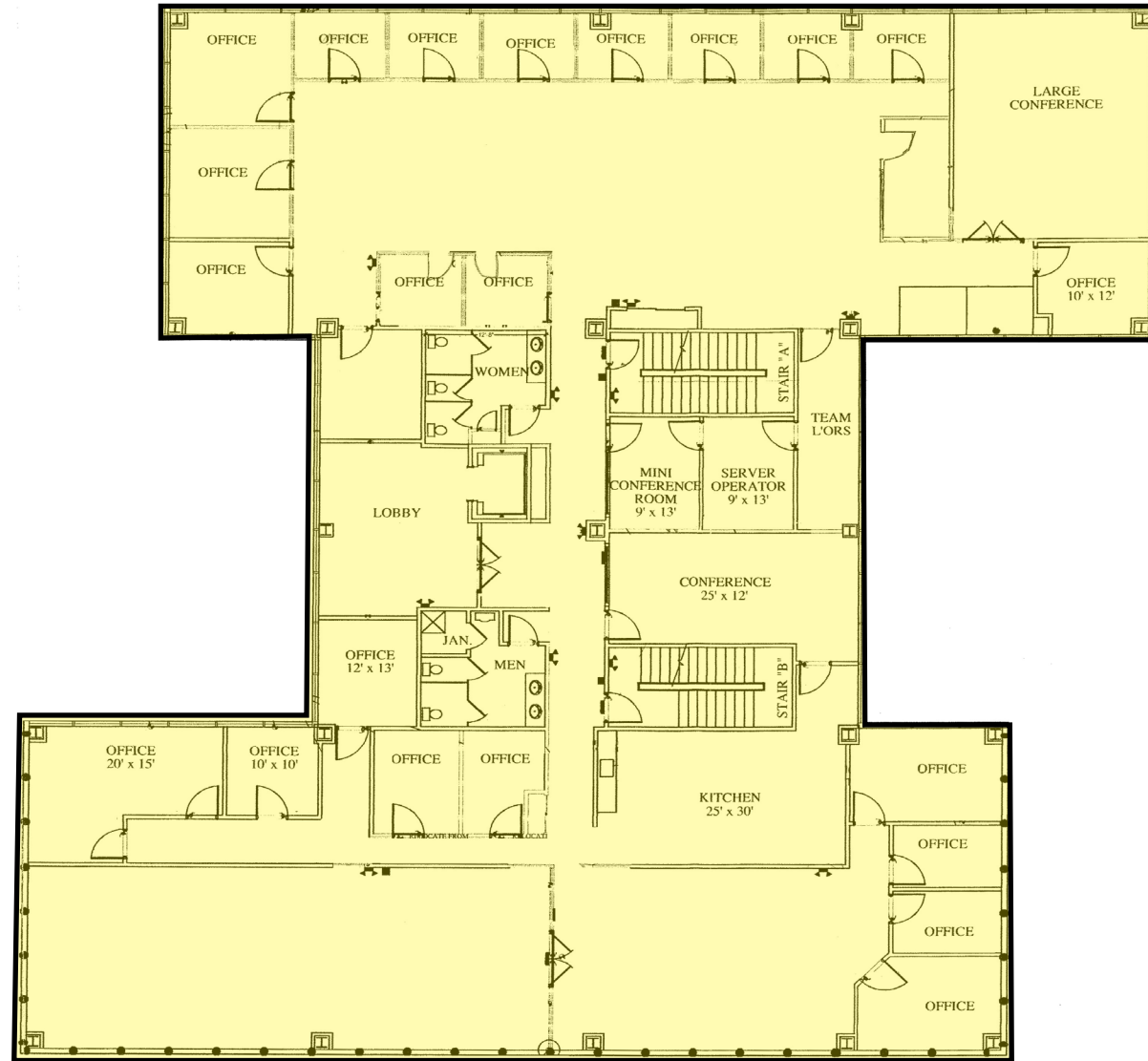
Lease Rate

\$18.00/RSF + Electric & Janitorial

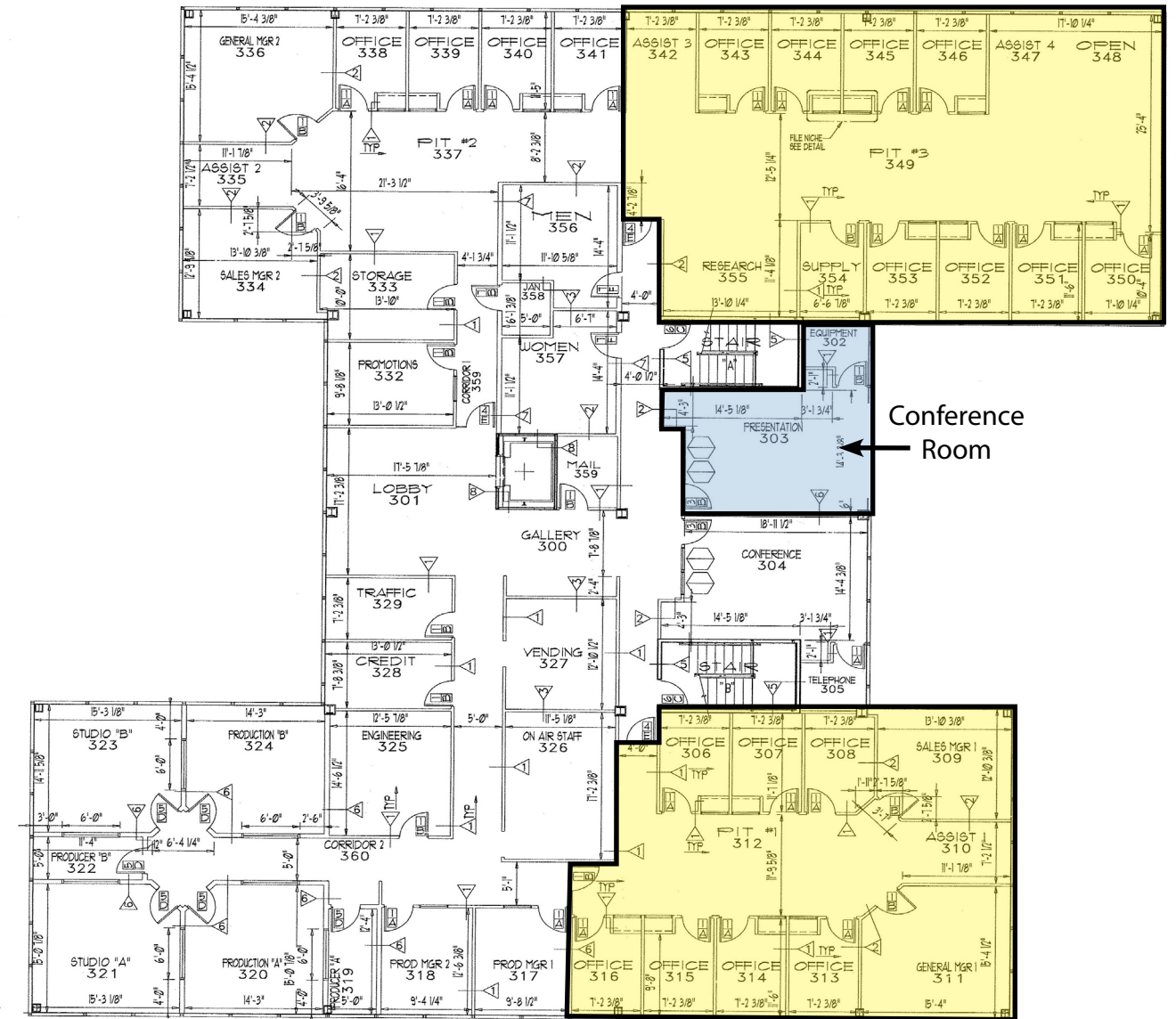
Property Highlights

- Four (4) story office building
- On-site free parking (3.5/1,000 SF)
- High end finishes - move-in condition
- On-site ownership and management, meticulously maintained
- Ideal location - private setting, minutes from the Parkway
- 5 minutes to Downtown and 15 minutes to the Pittsburgh International Airport

Second Floor 10,472 RSF



Third Floor 2,268 RSF



Third Floor 1,584 RSF

