

NOW LEASING

900 Parish Street | Pittsburgh, PA 15220

OXFORD
REALTY SERVICES, INC.

PROPERTY DESCRIPTION

BUILDING SIZE

37,015 RSF

AVAILABLE PREMISES

First Floor

-2,921 RSF

Second Floor

-10,472 RSF

Third Floor

-2,217 RSF

Fourth Floor

-Single Offices Available

PROPERTY HIGHLIGHTS

- Four (4) story office building
- On-site free parking (3.5/1,000 SF)
- High end finishes - move-in condition
- On-site ownership and management, meticulously maintained
- Ideal location - private setting, minutes from the Parkway
- 5 minutes to Downtown and 15 minutes to the Pittsburgh International Airport

LEASE RATE

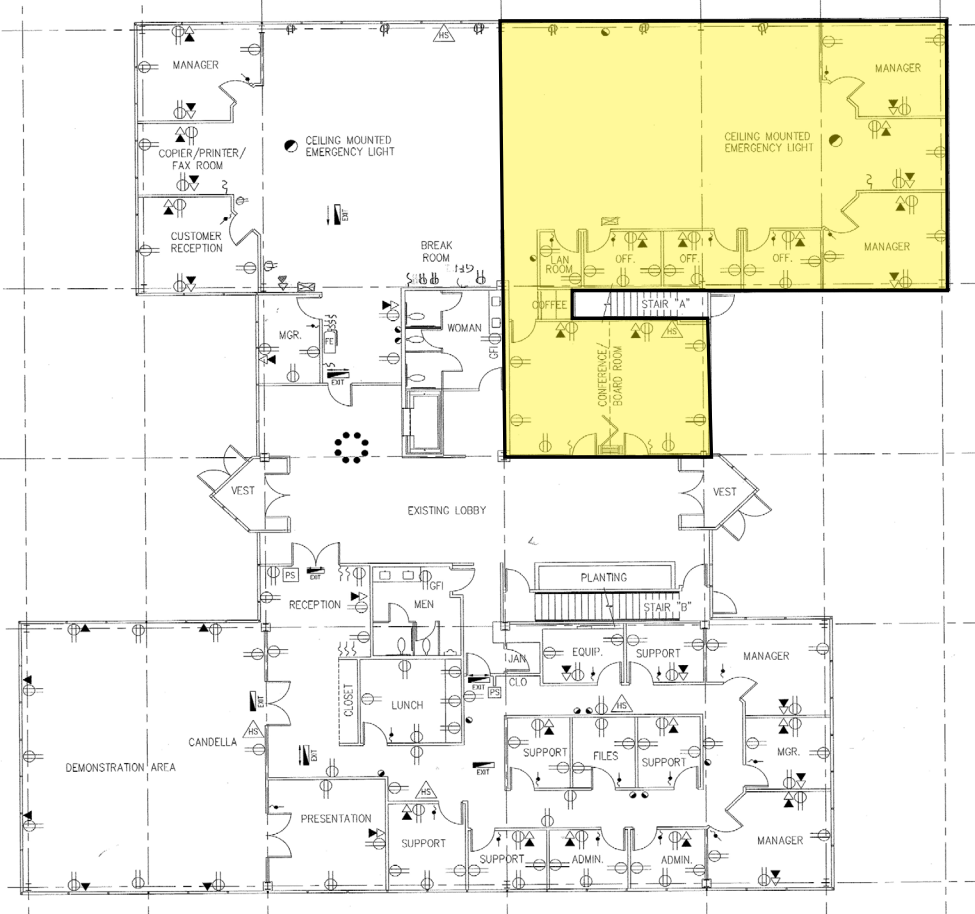
\$18.00/RSF + Electric & Janitorial



900 PARISH STREET

FLOOR PLANS & PHOTOS

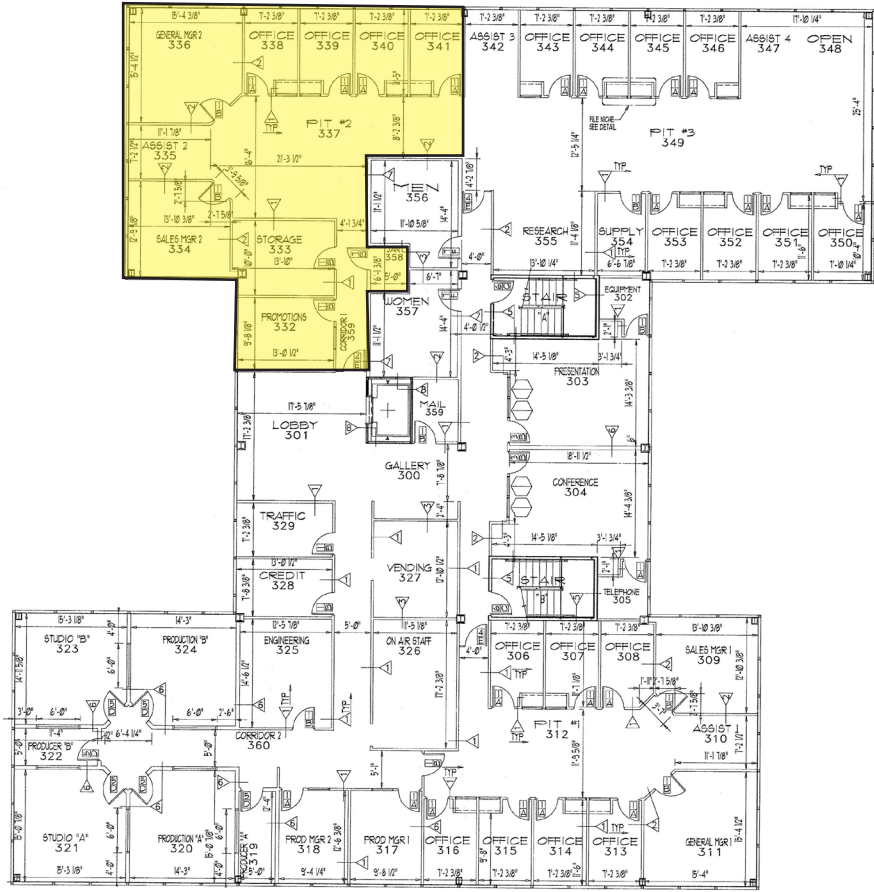
1st FLOOR



900 PARISH STREET

FLOOR PLANS & PHOTOS

3rd FLOOR




900 PARISH STREET

PROPERTY LOCATION



900 PARISH STREET



For more information please contact:

Taylor N. Iaboni

Vice President

412.261.0200, ext 3493

tiaboni@oxfordrealtyservices.com

Joseph F. Tosi, SIOR

Executive Vice President

412.261.0200, ext 3471

jtosi@oxfordrealtyservices.com

Oxford Realty Services, Inc.

2865 Railroad Street, Suite 202

Pittsburgh, PA 15222

www.oxfordrealtyservices.com

900 Parish Street | Pittsburgh, PA 15220