



**NOW LEASING**

900 Parish Street | Pittsburgh, PA 15220



# PROPERTY DESCRIPTION

## BUILDING SIZE

37,015 RSF

## AVAILABLE PREMISES

### Second Floor

-10,472 RSF

### Fourth Floor

-Single Offices Available

## PROPERTY HIGHLIGHTS

- Four (4) story office building
- On-site free parking (3.5/1,000 SF)
- High end finishes - move-in condition
- On-site ownership and management, meticulously maintained
- Ideal location - private setting, minutes from the Parkway
- 5 minutes to Downtown and 15 minutes to the Pittsburgh International Airport

## LEASE RATE

\$18.00/RSF + Electric & Janitorial

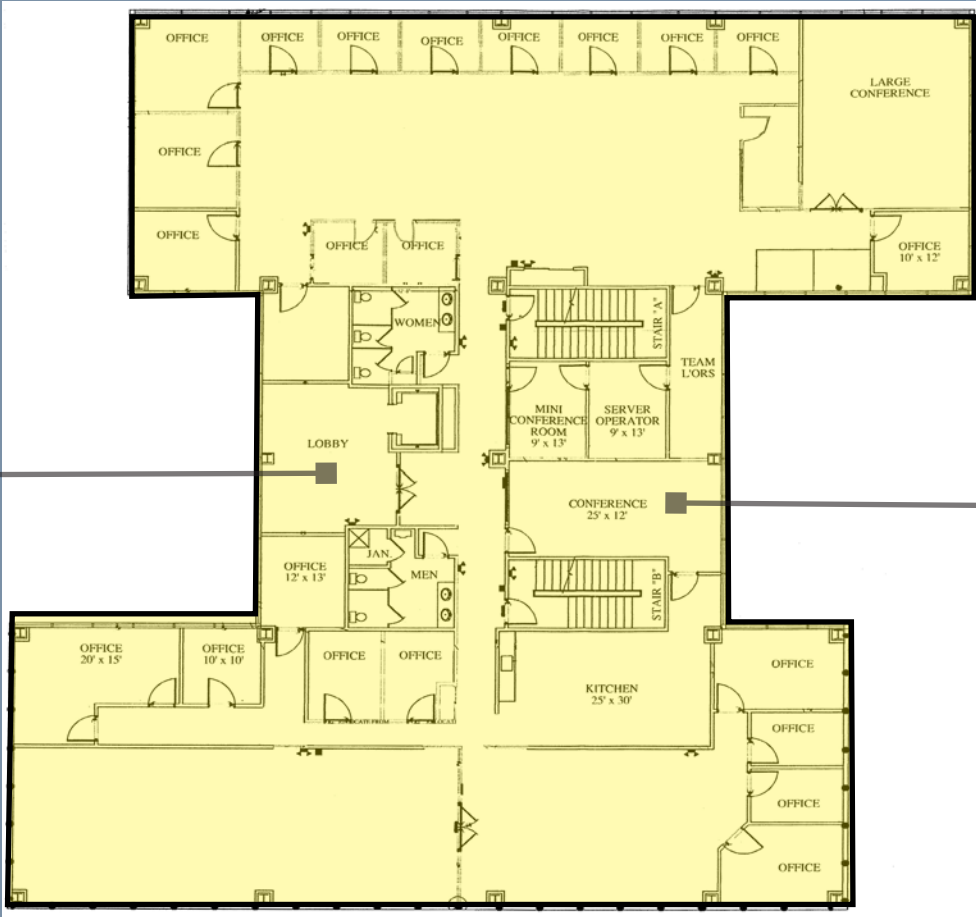


900 PARISH STREET

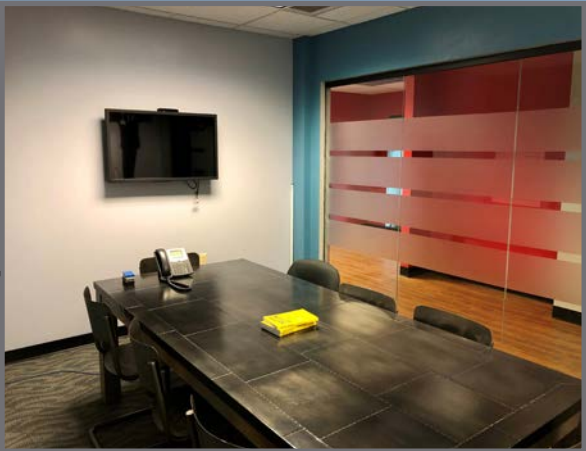
# FLOOR PLANS

## 2<sup>nd</sup> FLOOR

Lobby



Conference Room



900 PARISH STREET

# INTERIOR PHOTOS

Breakroom



Open Area



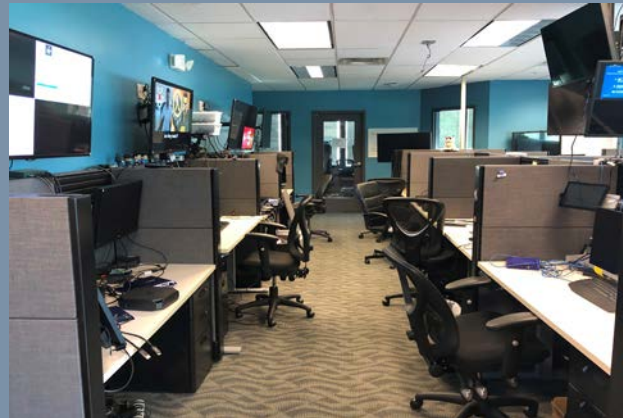
Meeting Room



Cubicles



Cubicles



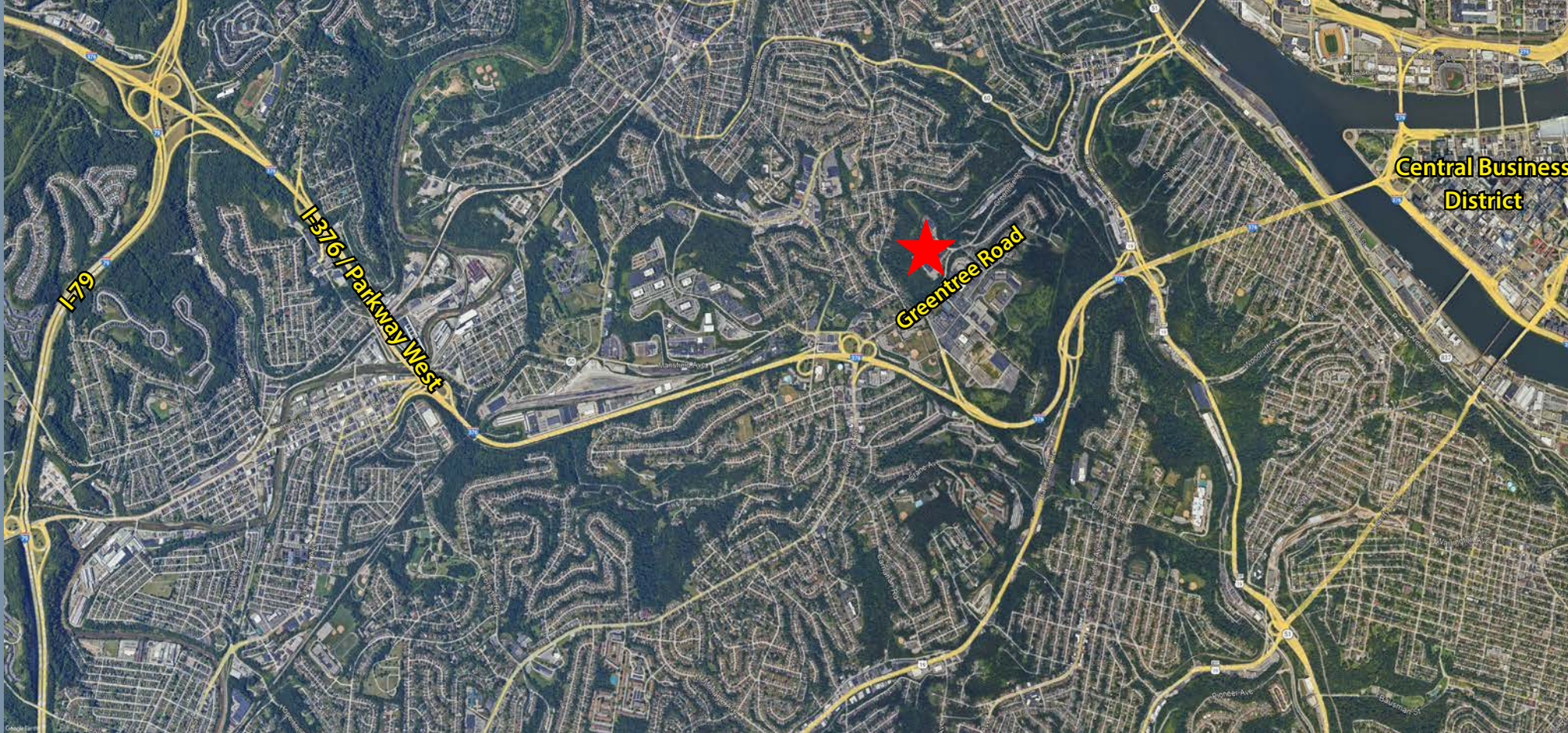
Private Office



900 PARISH STREET




# PROPERTY LOCATION



9000 PARISH STREET





For more information please contact:

**Taylor N. Iaboni**  
Vice President

412.261.0200, ext 3493  
tiaboni@oxfordrealtyservices.com

**Joseph F. Tosi, SIOR**  
Executive Vice President

412.261.0200, ext 3471  
jtosi@oxfordrealtyservices.com

**Oxford Realty Services, Inc.**

2545 Railroad Street  
Pittsburgh, PA 15222  
[www.oxfordrealtyservices.com](http://www.oxfordrealtyservices.com)

900 Parish Street | Pittsburgh, PA 15220