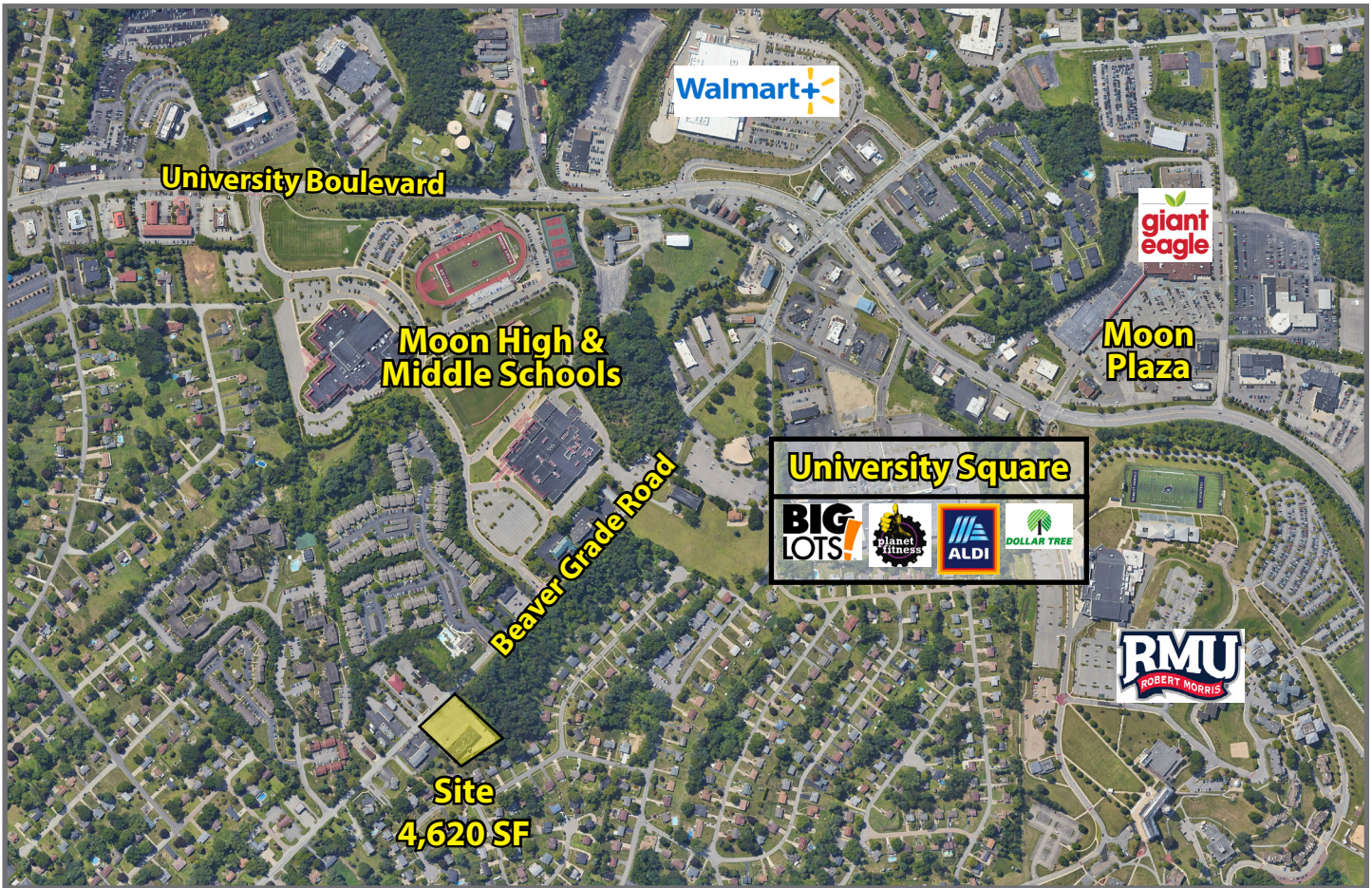


Sharon Center

935 Beaver Grade Road, Coraopolis, PA 15108 (Moon Township)



Available Premises

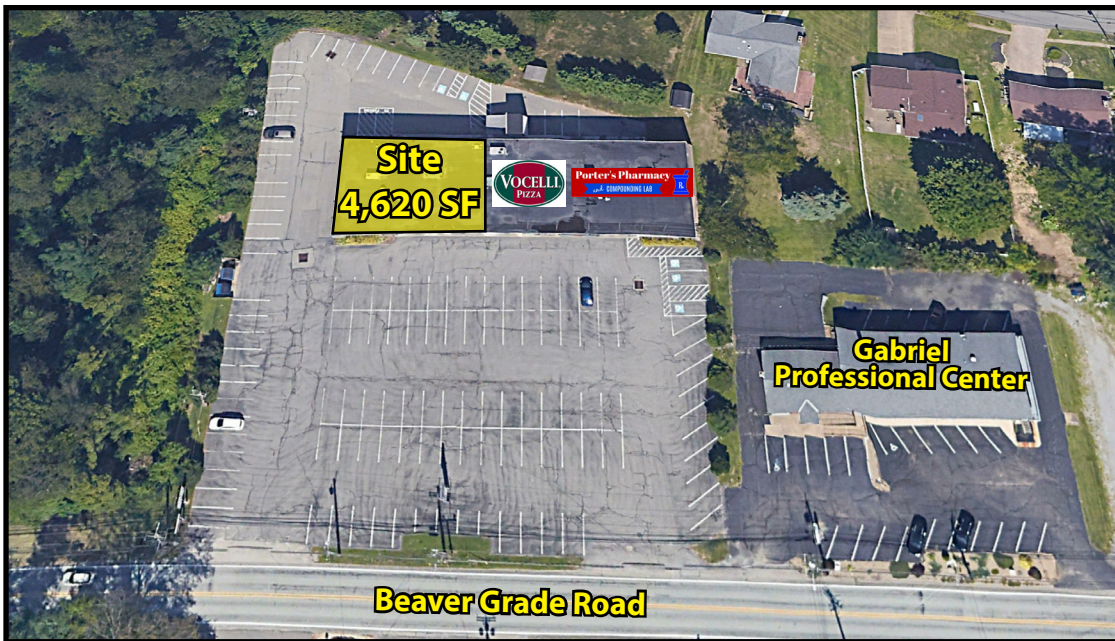
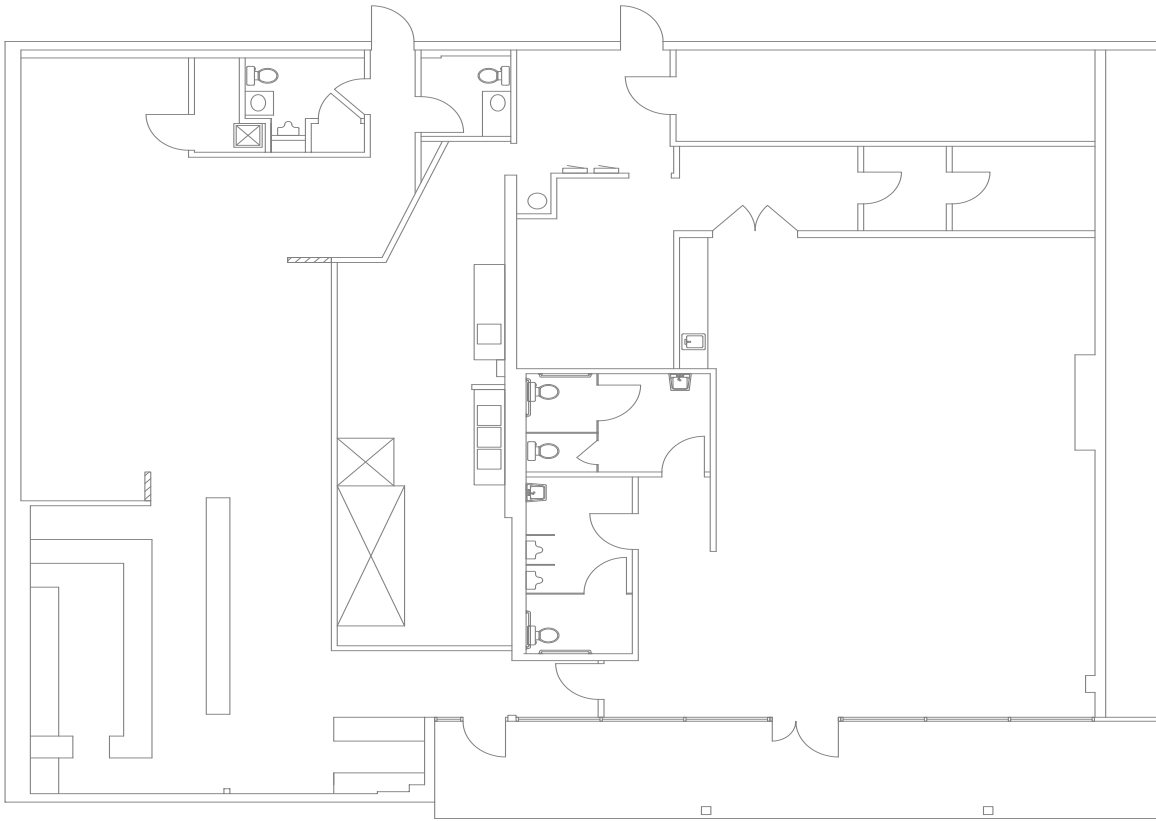
- 4,620 SF - Former Mario's Restaurant & Catering

Property Highlights

- Building and pylon signage available
- Average Daily Traffic on Beaver Grade Road is 12,536
- Great visibility and easy access from University Boulevard and Thorn Run Road
- Established neighborhood center with long term co-tenants including Porter's Pharmacy, Vocelli Pizza, DiVora Hair Studio and Planned Parenthood

DEMOGRAPHICS

	1-MILE	3-MILE	5-MILE
Population	6,625	32,118	67,631
Avg. HH Income	\$87,838	\$107,883	\$105,164



For more information please contact:

Arthur J. DiDonato, Jr.
Senior Vice President, Retail Brokerage

Oxford Realty Services, Inc.
412.261.0200, ext 3436
adidonato@oxfordrealtyservices.com

OXFORD

REALTY SERVICES, INC.

2545 Railroad Street - Suite 300

Pittsburgh, PA 15222

www.oxfordrealtyservices.com

Although all information furnished regarding property for sale, rental or financing is from sources deemed reliable, such information has not been verified, and no express representation is made nor is any to be implied as to the accuracy thereof, and it is submitted subject to errors, omissions, change of price, rental or other conditions, prior sale, lease or financing, or withdrawal without notice. Rental terms and all dimensions are approximate and specifications are subject to change without notice. Oxford Realty Services, Inc., an independent real estate services company.