



For more information please contact:

**Jeffrey A. Deitrick, SIOR**  
Executive Vice President

Oxford Realty Services, Inc.  
412.261.0200, ext 3473  
jdeitrick@oxfordrealtyservices.com

**Morgan Wann**  
Property Manager/VP

Wann Properties  
724-935-7990  
morgan@wannprop.com

**OXFORD**  
REALTY SERVICES, INC.

2545 Railroad Street - Suite 300  
Pittsburgh, PA 15222  
www.oxfordrealtyservices.com

Although all information furnished regarding property for sale, rental or financing is from sources deemed reliable, such information has not been verified, and no express representation is made nor is any to be implied as to the accuracy thereof, and it is submitted subject to errors, omissions, change of price, rental or other conditions, prior sale, lease or financing, or withdrawal without notice. Rental terms and all dimensions are approximate and specifications are subject to change without notice. Oxford Realty Services, Inc., an independent real estate services company.

# OXFORD

REALTY SERVICES, INC.

Real Estate Brokerage Services

Office | Industrial | Retail | Investing | Consulting

## Blaymore Office Park

Sewickley, PA 15143



### Available Premises

#### Blaymore I

- 4,502 RSF - 3rd Floor

#### Blaymore II

- 5,684 RSF - 1st Floor
- 18,411 RSF - 2nd Floor
- 2,654 RSF - 3rd Floor

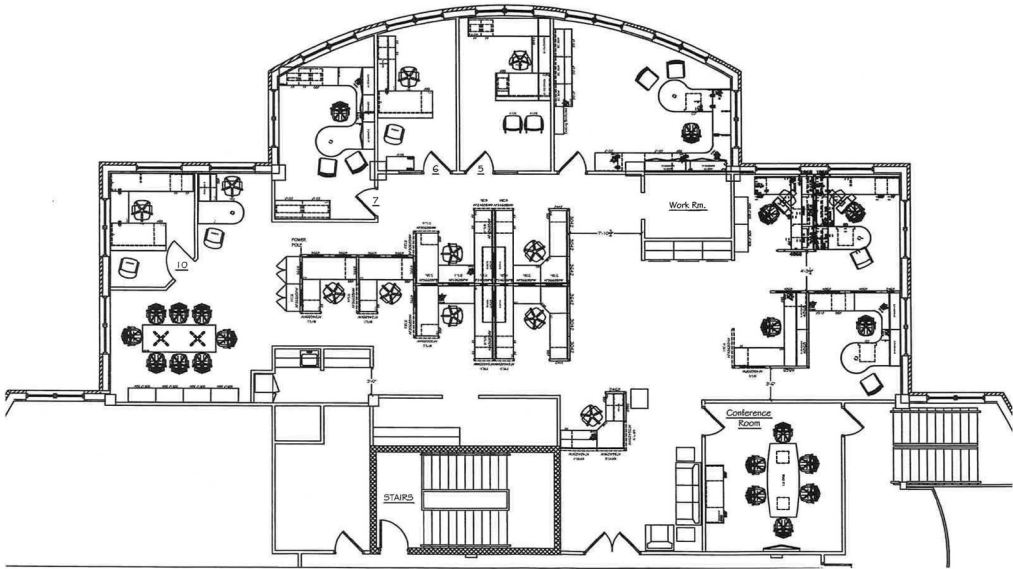
#### Blaymore IV

- 1,800 RSF - 1st Floor
- 13,500 RSF - 4th Floor

### Property Highlights

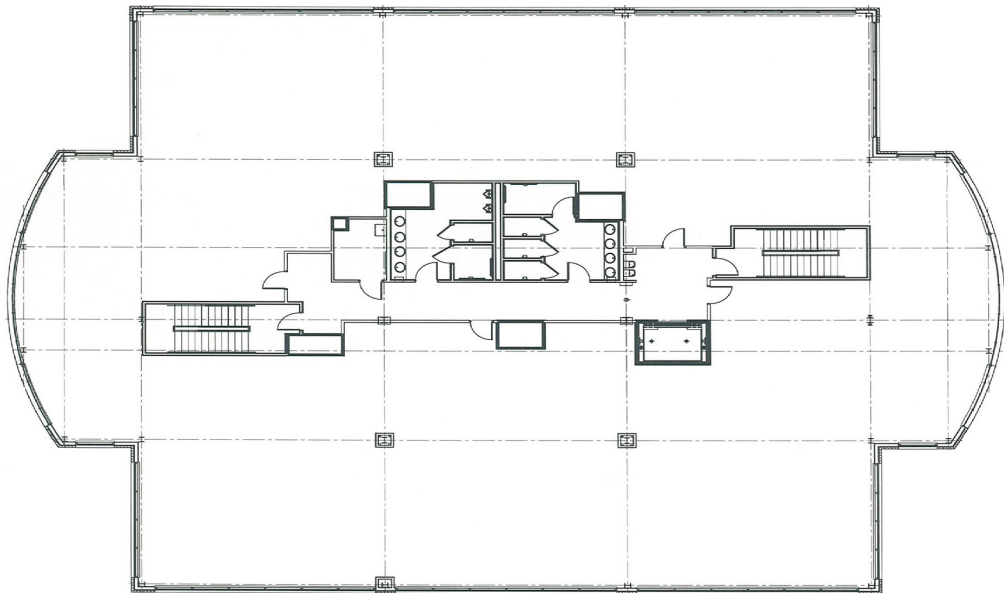
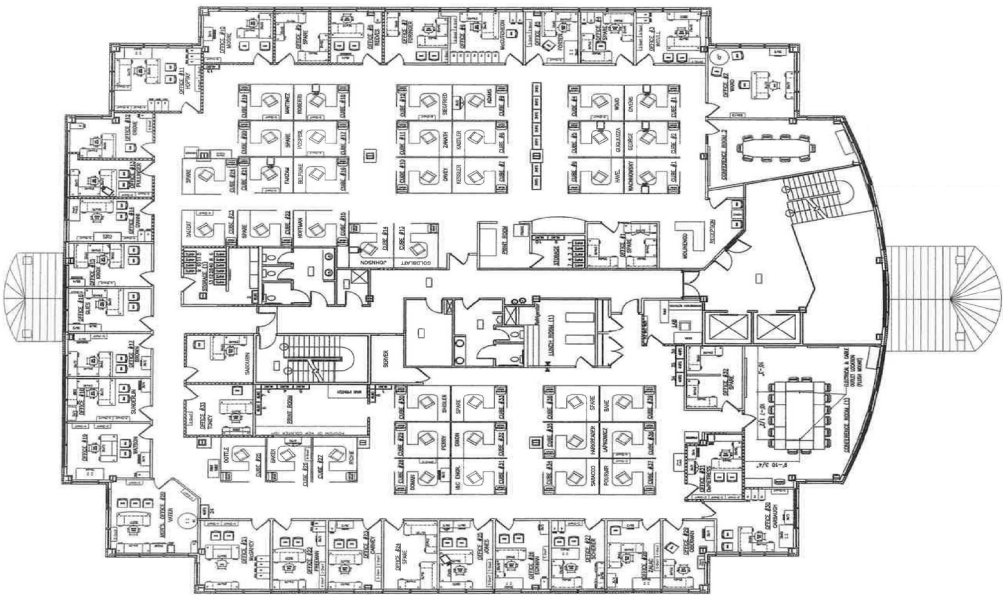
- Located just off the Wexford exit of I-79
- Class A office campus / meticulously maintained
- Abundant parking (4 per 1,000 SF)
- All space subdividable and build-to-suit
- Exceptional build-out value
- Extremely efficient floor plates
- Well appointed free private outdoor seating areas at all buildings





**Blaymore I**  
3rd Floor  
4,502 RSF

**Blaymore II**  
2nd Floor  
18,411 RSF  
Subdividable



**Blaymore IV**  
4th Floor  
13,500 RSF  
Subdividable



**Blaymore II**



**Blaymore IV**