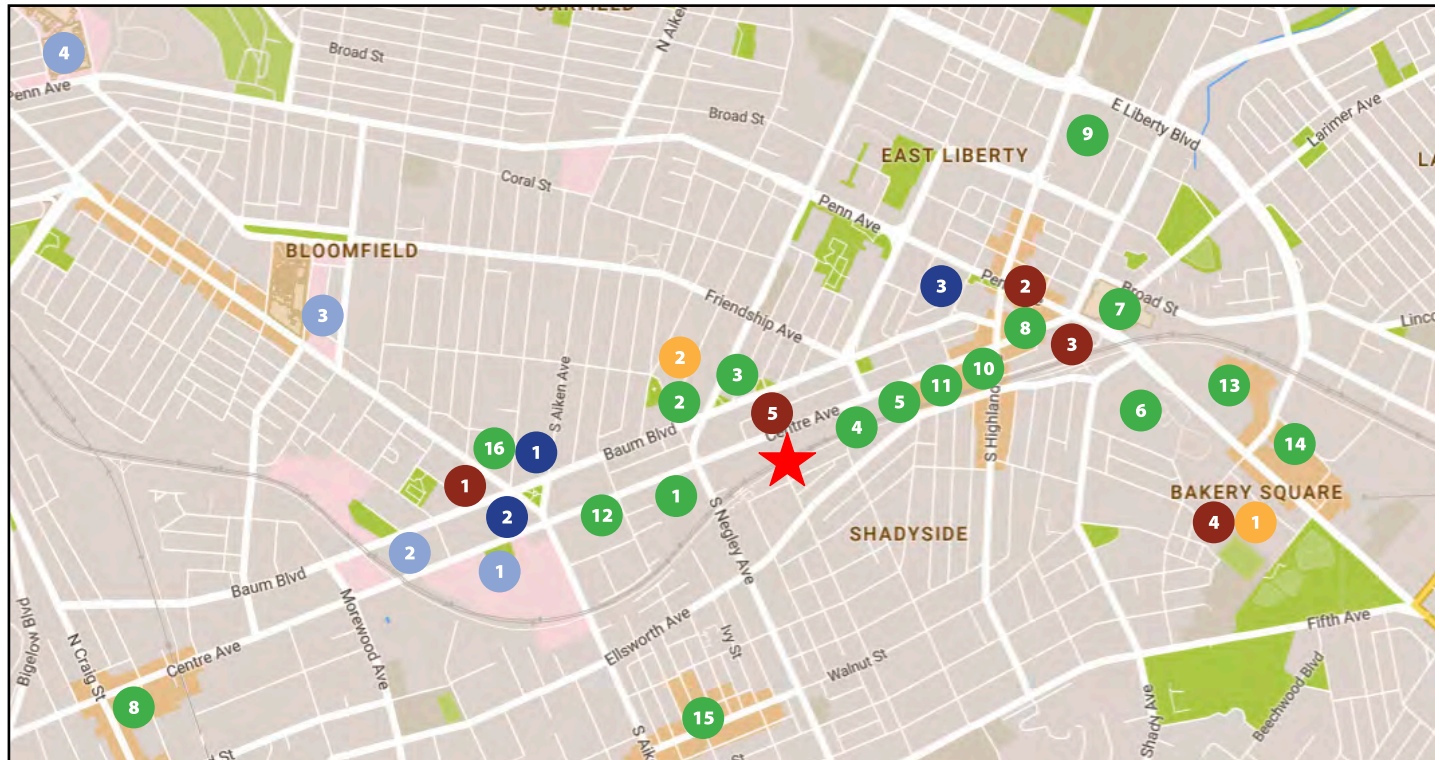


Centre Commons

5750 Centre Avenue, Pittsburgh, PA



East End Retail

- 1 Giant Eagle Market District
- 2 Aldi
- 3 Rite Aid
- 4 Whole Foods
- 5 Walgreens
- 6 Giant Eagle
- 7 Target
- 8 CVS
- 9 The Home Depot
- 10 Spoon
- 11 BRGR
- 12 Panera Bread
- 13 The Village at Eastside
- 14 Bakery Square
- 15 Walnut Street Retail
- 16 The Junction of Bloomfield

East End Residential

- 1 **Morrow Park Apartments**
213 Residential Units
- 2 **Penn at Walnut on Highland**
78 Residential Units
16,000 SF Retail
- 3 **Eastside III**
364 Residential Units
43,000 SF Retail
- 4 **Bakery Square 2.0**
400 Residential Units
- 5 **CODA on Centre**
175 Residential Units

East End Hospitality

- 1 **HYATT House**
128 Rooms
- 2 **Family House**
136 Rooms
- 3 **Ace Hotel**
63 Rooms

East End Health Care

- 1 **UPMC Shadyside Hospital**
- 2 **Hillman Cancer Center**
- 3 **West Penn Hospital**
- 4 **Children's Hospital of Pittsburgh of UPMC**

East End Office and Retail

- 1 **Bakery Square 2.0**
400,000 SF Office
- 2 **Aldi**
Office Space
- 3 **East Liberty Centre**
60,000 SF Office/20,000 SF Retail
- 4 **Schoolhouse Electric and Supply Co.**
63,000 SF Retail



Available Premises

First Floor

- 1,721 RSF
- 1,728 RSF

Second Floor

- 2,126 RSF
(Second Generation Medical Space)

Property Highlights

- Professional & medical office suites
- AMPLE PARKING - High ratio of covered and surface parking available
- ADA accessible access and restrooms
- Minutes from the Children's Hospital, West Penn Hospital, The Hillman Cancer Center and UPMC Shadyside
- Close to Whole Foods, Target and all the new exciting restaurants and development happening in East Liberty

For more information please contact:

Joe Tosi, SIOR
Executive Vice President

Oxford Realty Services, Inc.
412.261.0200, ext 3471
jtosi@oxfordrealtyservices.com

Taylor N. Iaboni
Vice President

Oxford Realty Services, Inc.
412.261.0200, ext 3493
tiaboni@oxfordrealtyservices.com

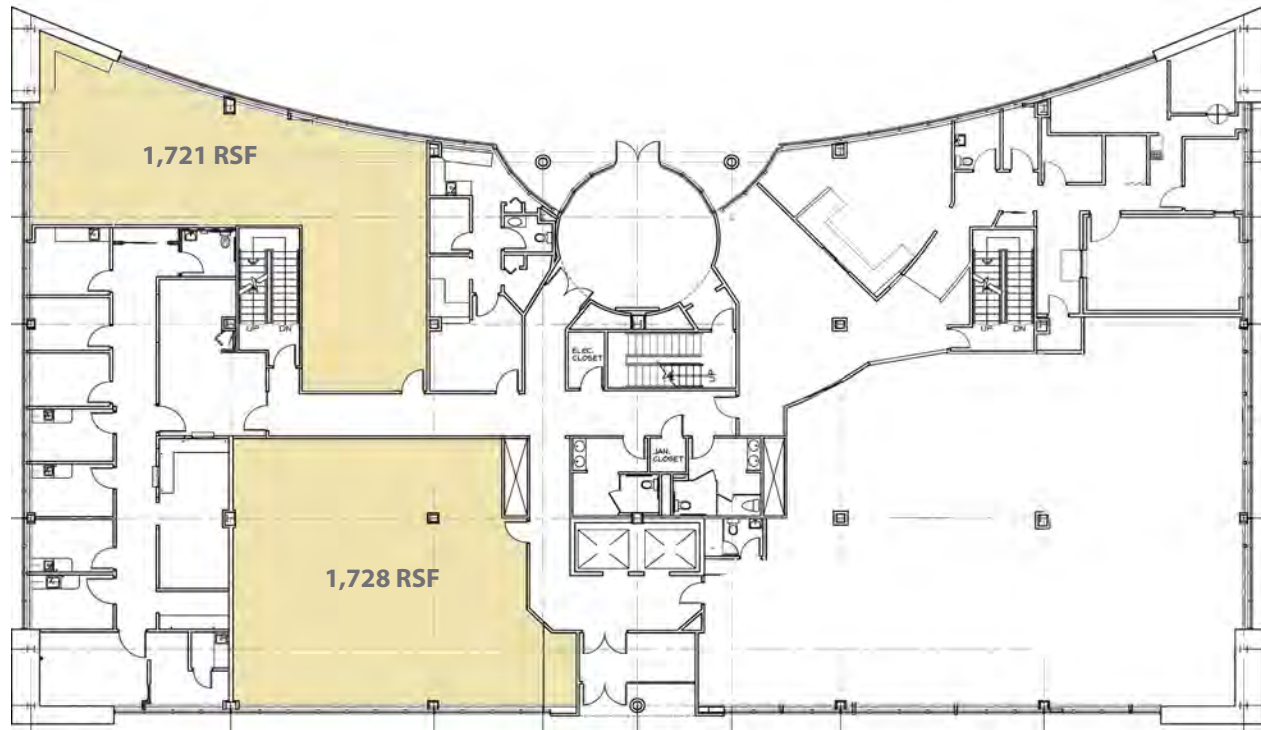
OXFORD

REALTY SERVICES, INC.

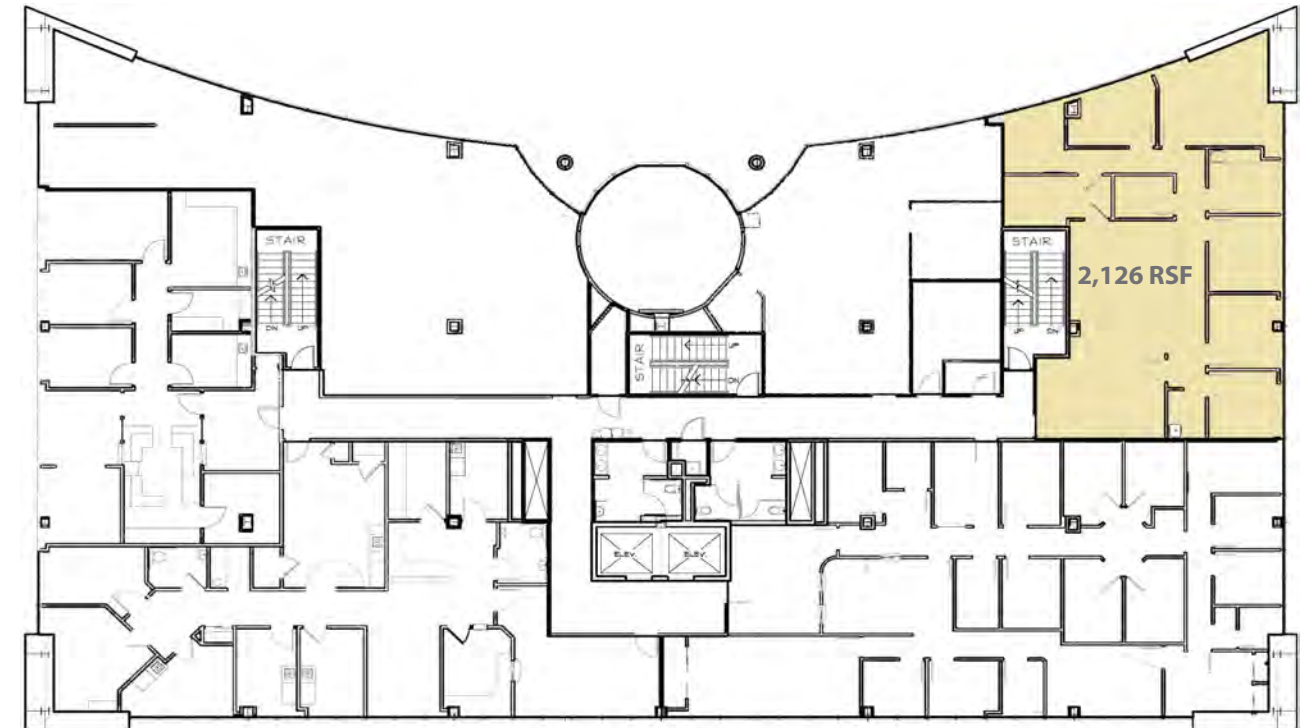
2545 Railroad Street
Pittsburgh, PA 15222
www.oxfordrealtyservices.com

Although all information furnished regarding property for sale, rental or financing is from sources deemed reliable, such information has not been verified, and no express representation is made nor is any to be implied as to the accuracy thereof, and it is submitted subject to errors, omissions, change of price, rental or other conditions, prior sale, lease or financing, or withdrawal without notice. Rental terms and all dimensions are approximate and specifications are subject to change without notice. Oxford Realty Services, Inc., an independent real estate services company.

First Floor



Second Floor



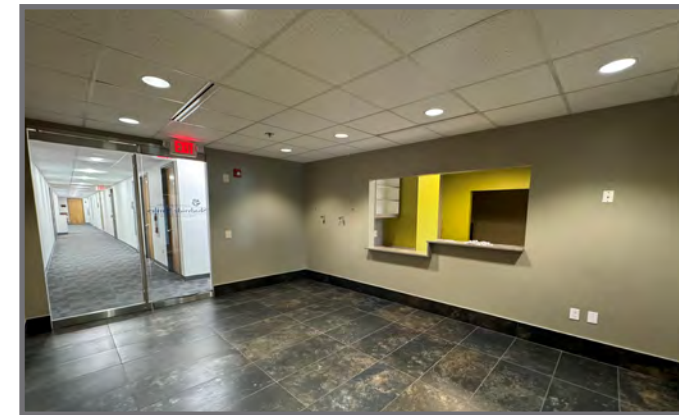
Enhanced Landscaping



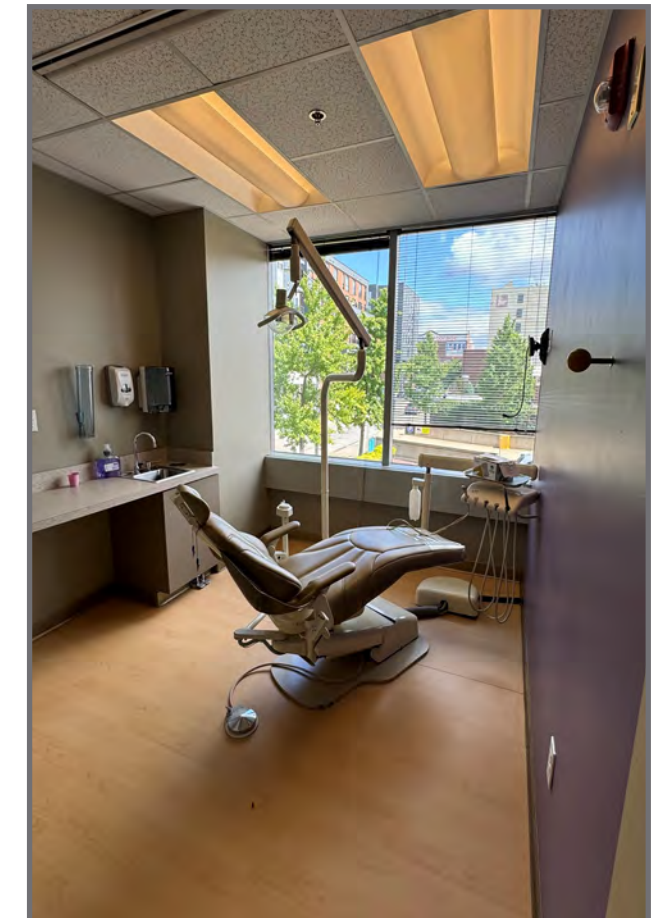
Updated Lobby



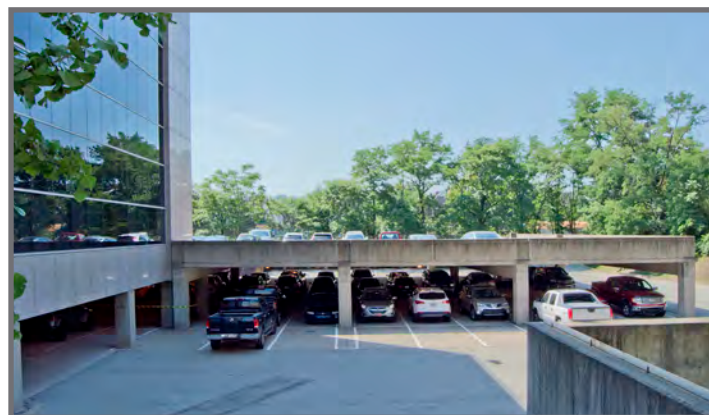
Reception / Waiting Room



Exam Room



Ample On-Site / Covered Parking



Office Area

