

Centre Commons

5750 Centre Avenue, Pittsburgh, PA



Available **Premises**

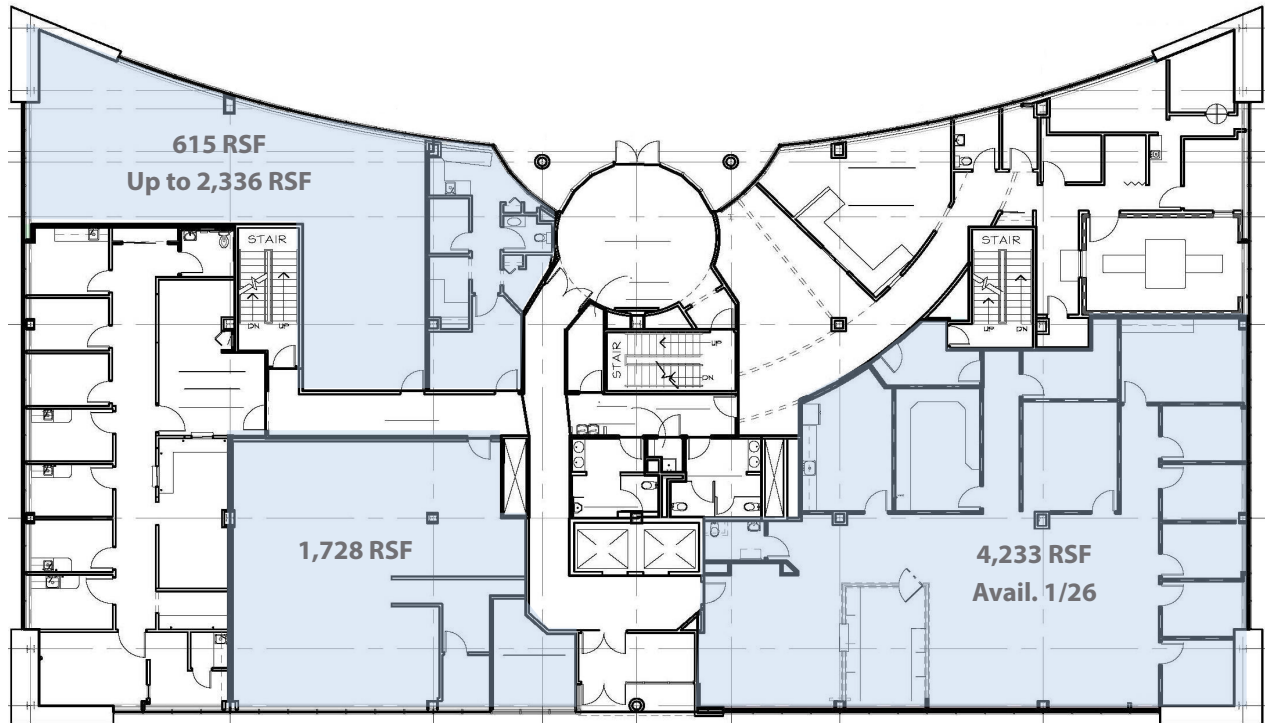
First Floor

- Up to 2,336 RSF
- 1,728 RSF
- 4,233 RSF (Avail. 1/2026)

Property **Highlights**

- Professional & medical office suites
- AMPLE PARKING - High ratio of covered and surface parking available
- ADA accessible access and restrooms
- Minutes from the Children's Hospital, West Penn Hospital, The Hillman Cancer Center and UPMC Shadyside
- Close to Whole Foods, Target and all the new exciting restaurants and development happening in East Liberty

First Floor



Enhanced Landscaping

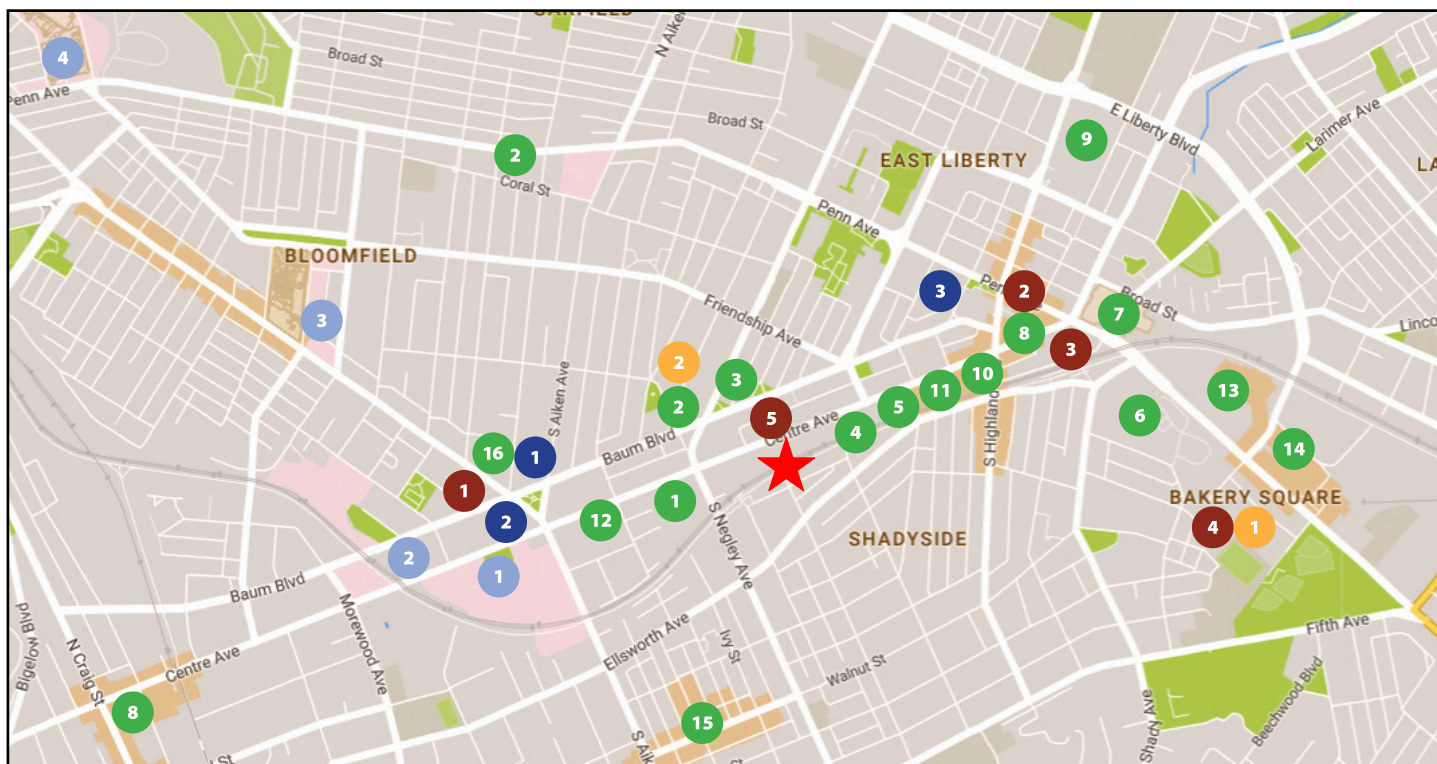


Updated Lobby



Ample On-Site / Covered Parking





East End Retail

- 1 Giant Eagle Market District
- 2 Aldi - 2 Locations
- 3 Rite Aid
- 4 Whole Foods
- 5 Walgreens
- 6 Giant Eagle
- 7 Target
- 8 CVS
- 9 The Home Depot
- 10 Spoon
- 11 BRGR
- 12 Panera Bread
- 13 The Village at Eastside
- 14 Bakery Square
- 15 Walnut Street Retail
- 16 The Junction of Bloomfield

East End Residential

- 1 Morrow Park Apartments
213 Residential Units
- 2 Penn at Walnut on Highland
78 Residential Units
16,000 SF Retail
- 3 Eastside III
364 Residential Units
43,000 SF Retail
- 4 Bakery Square 2.0
400 Residential Units
- 5 CODA on Centre
175 Residential Units

East End Hospitality

- 1 HYATT House
128 Rooms
- 2 Family House
136 Rooms
- 3 Ace Hotel
63 Rooms

East End Health Care

- 1 UPMC Shadyside Hospital
- 2 Hillman Cancer Center
- 3 West Penn Hospital
- 4 Children's Hospital of Pittsburgh of UPMC

East End Office and Retail

- 1 Bakery Square 2.0
400,000 SF Office
- 2 Aldi
Office Space
- 3 East Liberty Centre
60,000 SF Office/20,000 SF Retail
- 4 Schoolhouse Electric and Supply Co.
63,000 SF Retail

For more information please contact:

Joe Tosi, SIOR

Executive Vice President

Oxford Realty Services, Inc.

412.261.0200, ext 3471

jtosi@oxfordrealtyservices.com

Taylor N. Iaboni

Vice President

Oxford Realty Services, Inc.

412.261.0200, ext 3493

tiaboni@oxfordrealtyservices.com

OXFORD

REALTY SERVICES, INC.

2545 Railroad Street

Pittsburgh, PA 15222

www.oxfordrealtyservices.com

Although all information furnished regarding property for sale, rental or financing is from sources deemed reliable, such information has not been verified, and no express representation is made nor is any to be implied as to the accuracy thereof, and it is submitted subject to errors, omissions, change of price, rental or other conditions, prior sale, lease or financing, or withdrawal without notice. Rental terms and all dimensions are approximate and specifications are subject to change without notice. Oxford Realty Services, Inc., an independent real estate services company.