



**AVAILABLE FOR LEASE**

# **CENTRE COMMONS**

5750 Centre Avenue | Pittsburgh, PA 15206



# PROPERTY DESCRIPTION

## BUILDING SIZE

75,985 RSF

## AVAILABLE PREMISES

### First Floor

-Up to 2,336 RSF

-1,728 RSF

-4,233 RSF

(Available 1/2026)

## PROPERTY HIGHLIGHTS

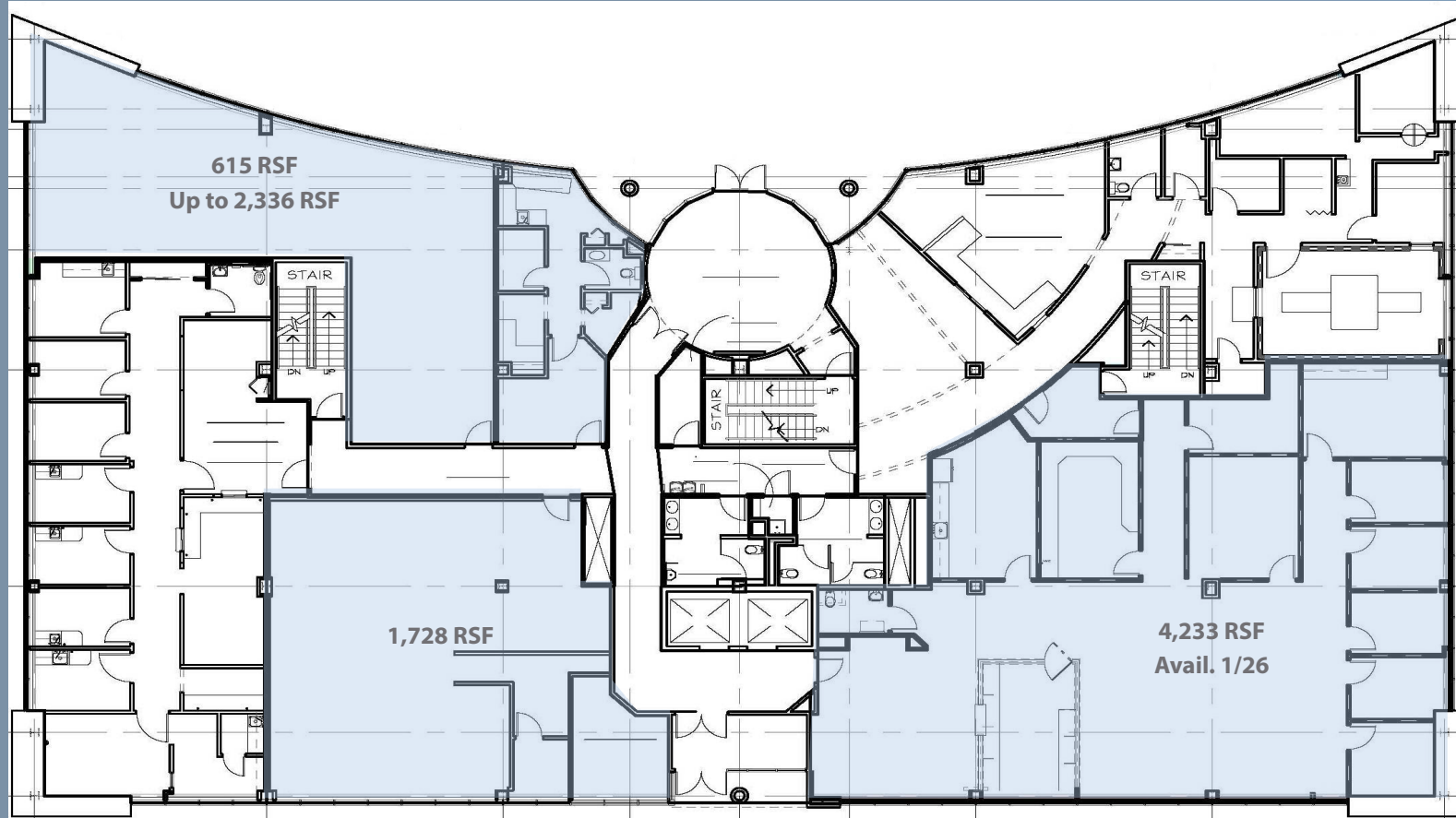
- Professional & medical office suites
- AMPLE PARKING - High ratio of covered and surface parking available
- ADA accessible access and restrooms
- Minutes from the Children's Hospital, West Penn Hospital, The Hillman Cancer Center and UPMC Shadyside
- Close to Whole Foods, Target and all the new exciting restaurants and development happening in East Liberty



CENTRE COMMONS

# FLOOR PLANS

## 1<sup>st</sup> FLOOR



CENTRE COMMONS



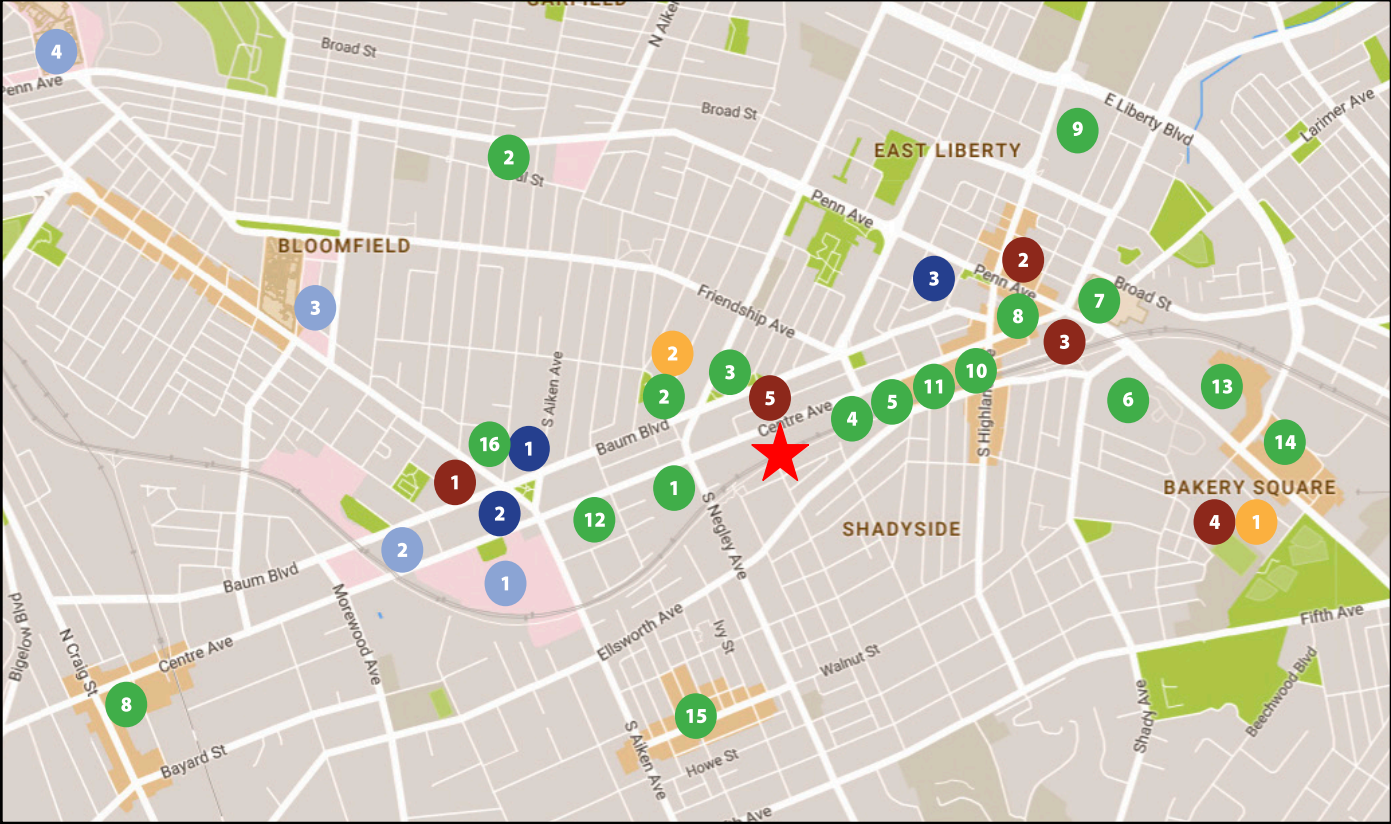
# INTERIOR PHOTOS



*\*4,233 SF Suite Images*

CENTRE COMMONS

# PROPERTY LOCATION



### East End Retail

- 1 Giant Eagle Market District
- 2 Aldi - 2 Locations
- 3 Rite Aid
- 4 Whole Foods
- 5 Walgreens
- 6 Giant Eagle
- 7 Target
- 8 CVS
- 9 The Home Depot
- 10 Spoon
- 11 BRGR
- 12 Panera Bread
- 13 The Village at Eastside
- 14 Bakery Square
- 15 Walnut Street Retail
- 16 The Junction of Bloomfield

### East End Health Care

- 1 UPMC Shadyside Hospital
- 2 Hillman Cancer Center
- 3 West Penn Hospital
- 4 UPMC Children's Hospital

### East End Residential

- 1 Morrow Park Apartments  
213 Residential Units
- 2 Penn at Walnut on Highland  
78 Residential Units  
16,000 SF Retail
- 3 Eastside III  
364 Residential Units  
43,000 SF Retail
- 4 Bakery Square 2.0  
400 Residential Units
- 5 CODA on Centre  
175 Residential Units

### East End Hospitality

- 1 HYATT House - 128 Rooms
- 2 Family House - 136 Rooms
- 3 Ace Hotel - 63 Rooms

### East End Office and Retail

- 1 Bakery Square 2.0  
400,000 SF Office
- 2 Aldi  
Office Space
- 3 East Liberty Centre  
60,000 SF Office/20,000 SF Retail
- 4 Schoolhouse Electric & Supply Co.  
63,000 SF Retail

CENTRE COMMONS



For more information please contact:

**Taylor N. Iaboni**

Vice President

412.261.0200, ext 3493

tiaboni@oxfordrealtyservices.com

**Joe Tosi, SIOR**

Executive Vice President

412.261.0200, ext 3471

jtosi@oxfordrealtyservices.com

**Oxford Realty Services, Inc.**

2865 Railroad Street, Suite 202

Pittsburgh, PA 15222

www.oxfordrealtyservices.com

THE  
RMR  
GROUP

# CENTRE COMMONS PITTSBURGH, PA