

Ehrman Square

21101 Perry Highway (Route 19), Cranberry Township, PA 16066



Available Premises

Building One - 40,500 SF - Retail / Service / Flex

Building Two - 38,420 SF - Retail

Building Three - 10,684 SF - Retail

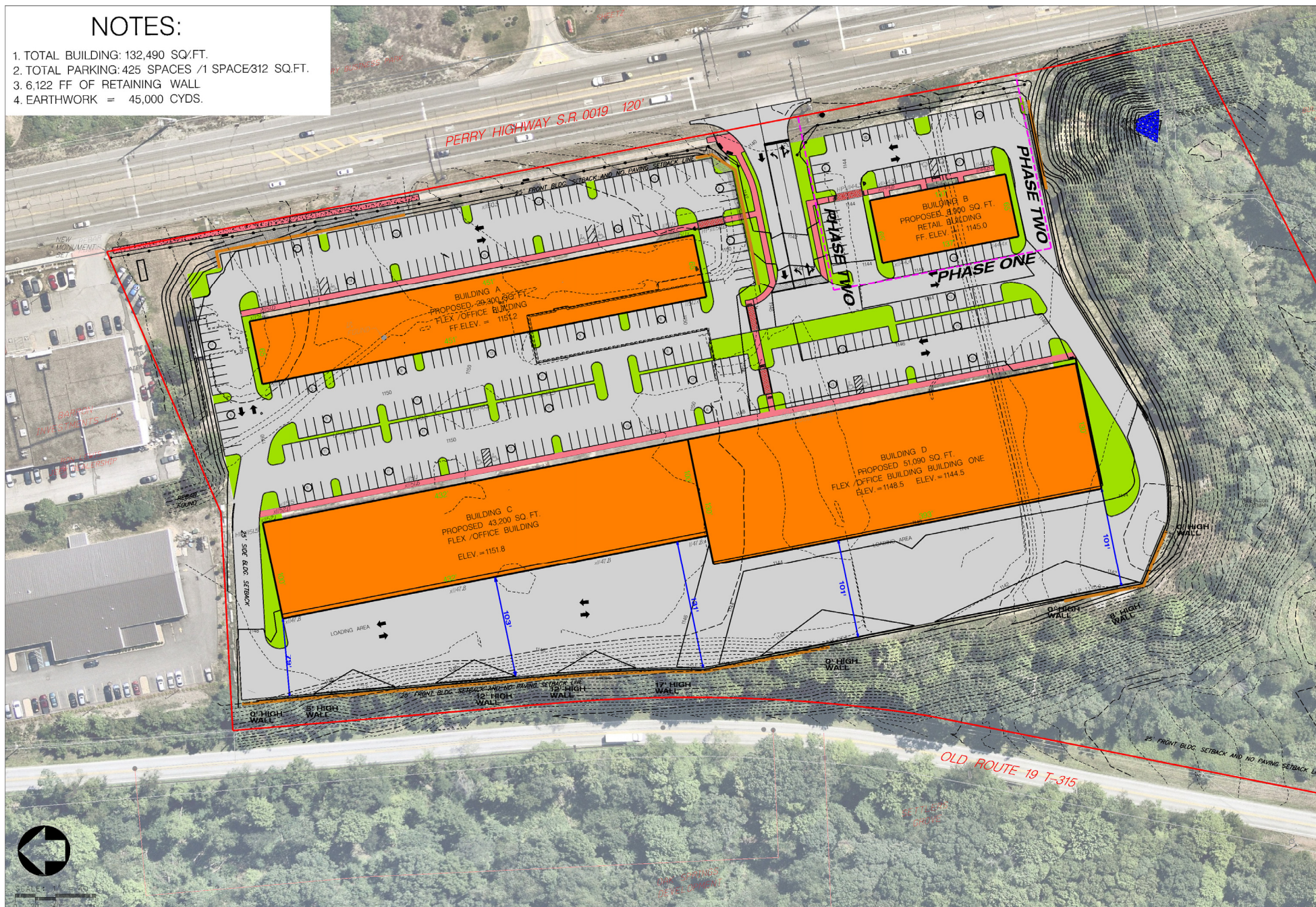
Property Highlights

- Re-development for retail / mixed-use / recreational uses
- Located at the intersection of Route 19 and Ehrman Road
- Great visibility and access

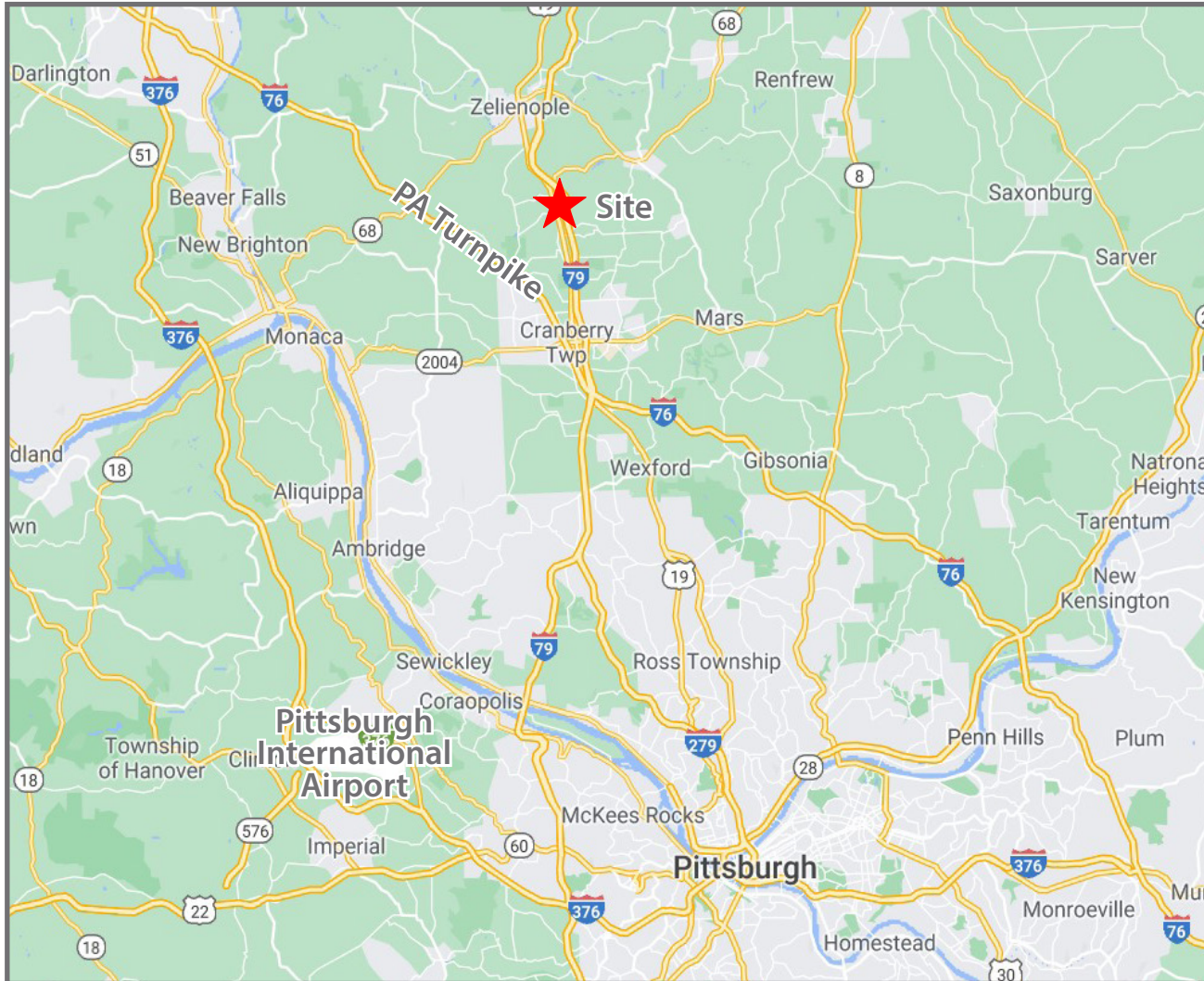
Project Overview

NOTES:

1. TOTAL BUILDING: 132,490 SQ.FT.
2. TOTAL PARKING: 425 SPACES /1 SPACE/312 SQ.FT.
3. 6,122 FF OF RETAINING WALL
4. EARTHWORK = 45,000 CYDS.



Ehrman Square, Cranberry Township, PA



DEMOGRAPHICS

	3-Mile	5-Mile
Population	21,287	53,539
Avg HH Income	\$122,098	\$92,029

PROXIMITY

- Distance to PA Turnpike - 5 Miles
- Distance to Downtown Pittsburgh - 22 Miles
- Distance to Pgh International Airport - 37 Miles

For More Information Contact:

Arthur J. DiDonato, Jr.

412.261.0200, ext. 3436

adidonato@oxfordrealtyservices.com

OXFORD
REALTY SERVICES, INC.