

## Plaza on Mall Boulevard

312 Mall Boulevard, Monroeville, PA 15146



### Available Premises

- 1,871 SF up to 12,100 SF

### Property Highlights

- Multiple smaller suites available with Building signage
- New capital improvements underway, including facade refresh, lighting, paving and concrete updates, along with a new pylon sign on Route 22
- Located in the heart of the Monroeville retail trade area and adjacent to the Monroeville Mall, a 1,418,700 square foot regional mall, as well as restaurant and hotel trade areas

#### AREA AVERAGE DAILY TRAFFIC

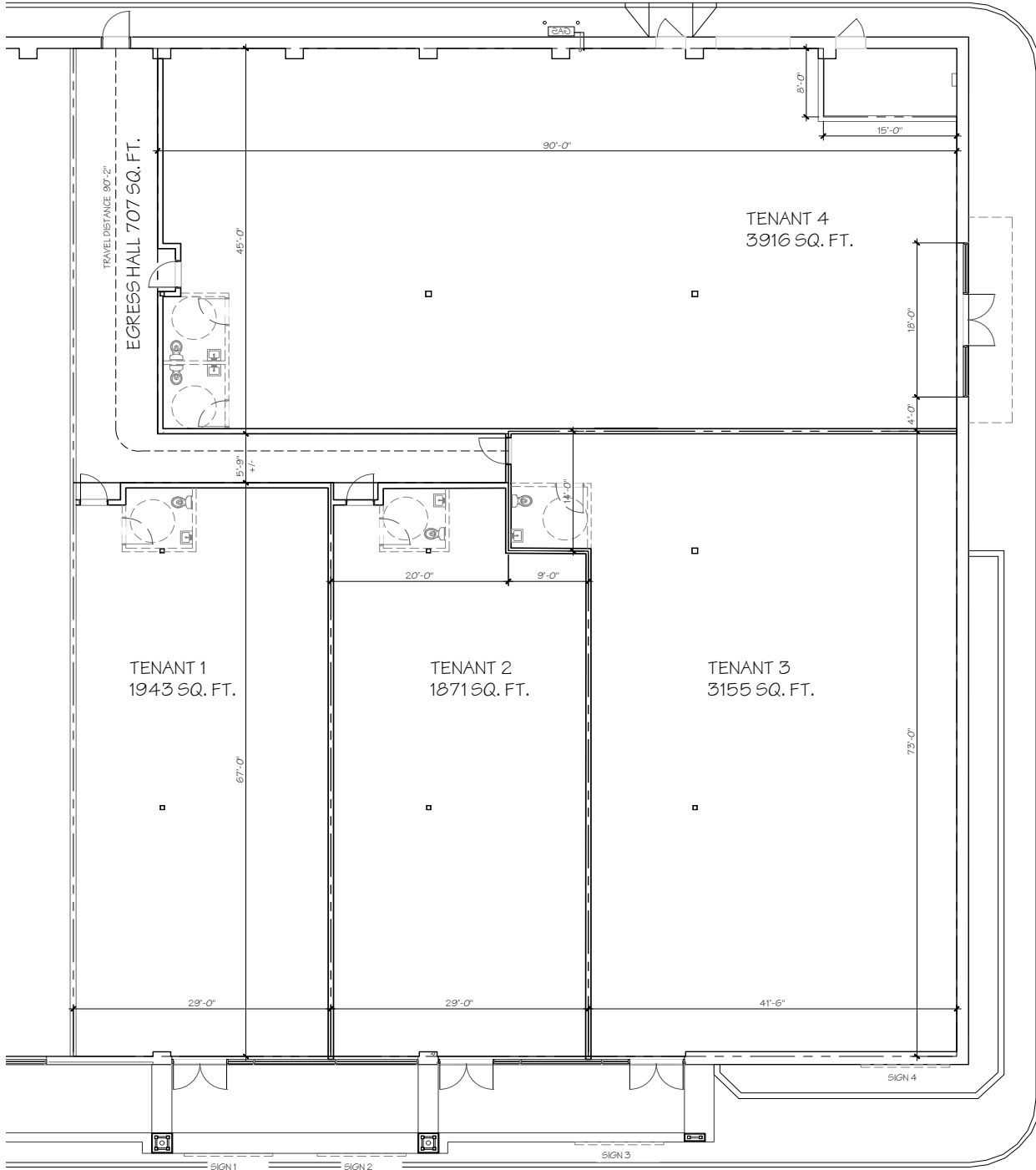
William Penn Highway	24,772
Mall Boulevard	10,683

#### DEMOGRAPHICS

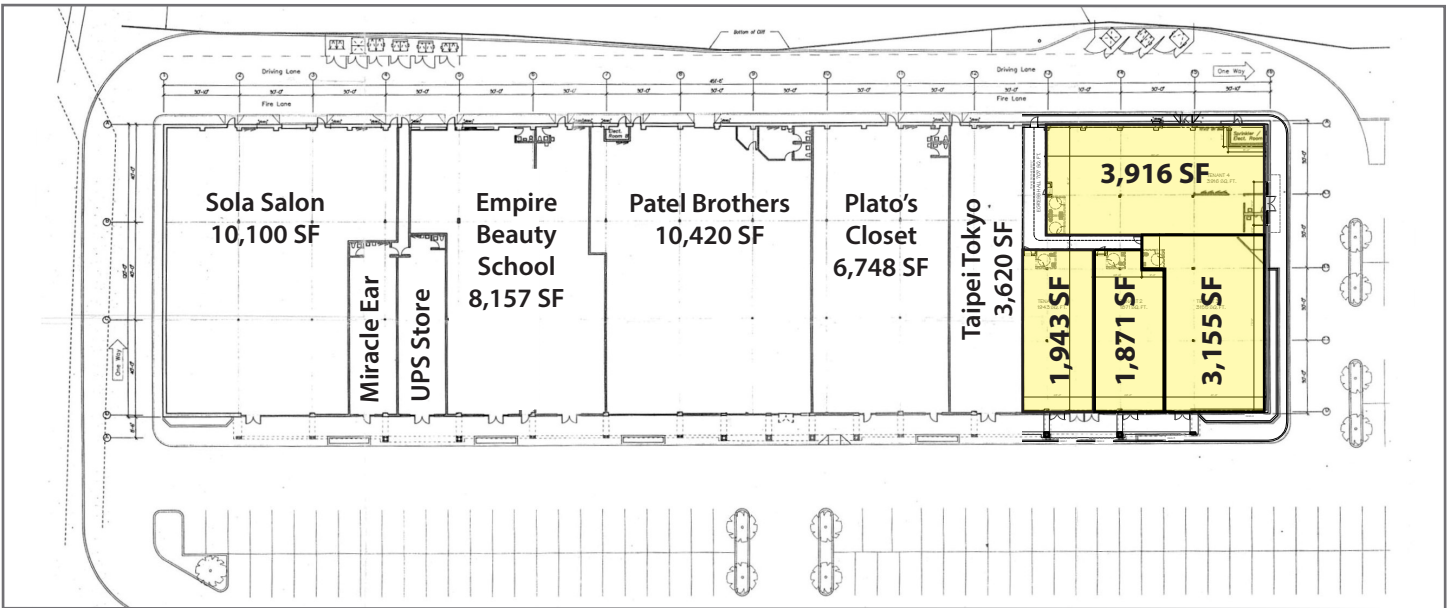
	1-MILE	3-MILES	5-MILES
Population:	6,457	55,463	157,844
Avg. HH Income:	\$77,059	\$74,970	\$74,526

## Available Suites

### 1,871 SF up to 12,100 SF



**\*Configuration above is for example purposes only - Landlord is able to demise and construct the space dependant upon Tenant's size and needs**



For more information please contact:

**Arthur J. DiDonato, Jr.**  
Senior Vice President, Retail Brokerage  
**Oxford Realty Services, Inc.**  
412.261.0200, ext 3436  
adidonato@oxfordrealtyservices.com

**Alec M. Parchinski**  
Associate  
**Oxford Realty Services, Inc.**  
412.261.0200, ext 3485  
aparchinski@oxfordrealtyservices.com

**OXFORD**  
REALTY SERVICES, INC.

2545 Railroad Street  
Pittsburgh, PA 15222  
www.oxfordrealtyservices.com

Although all information furnished regarding property for sale, rental or financing is from sources deemed reliable, such information has not been verified, and no express representation is made nor is any to be implied as to the accuracy thereof, and it is submitted subject to errors, omissions, change of price, rental or other conditions, prior sale, lease or financing, or withdrawal without notice. Rental terms and all dimensions are approximate and specifications are subject to change without notice. Oxford Realty Services, Inc., an independent real estate services company.