

Towne Centre Offices

1789 South Braddock Avenue, Pittsburgh, PA 15218



Building **Size**

- 93,068 RSF

Available **Premises**

Second Floor

- 910 RSF
- 2,540 RSF (Medical)

Third Floor

- 412 RSF

Fifth Floor

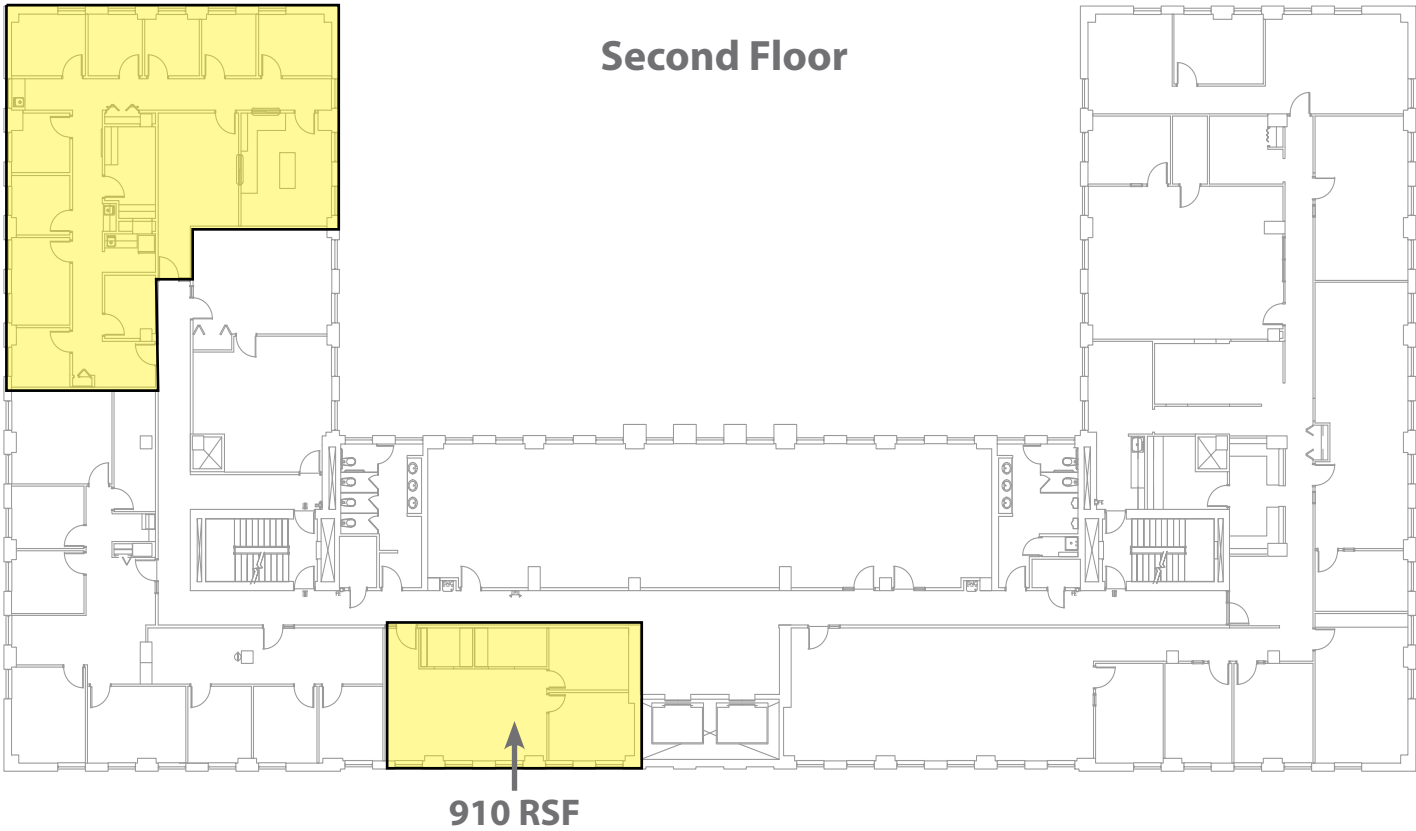
- 621 RSF to 1,533 RSF
- 2,004 RSF

Property **Highlights**

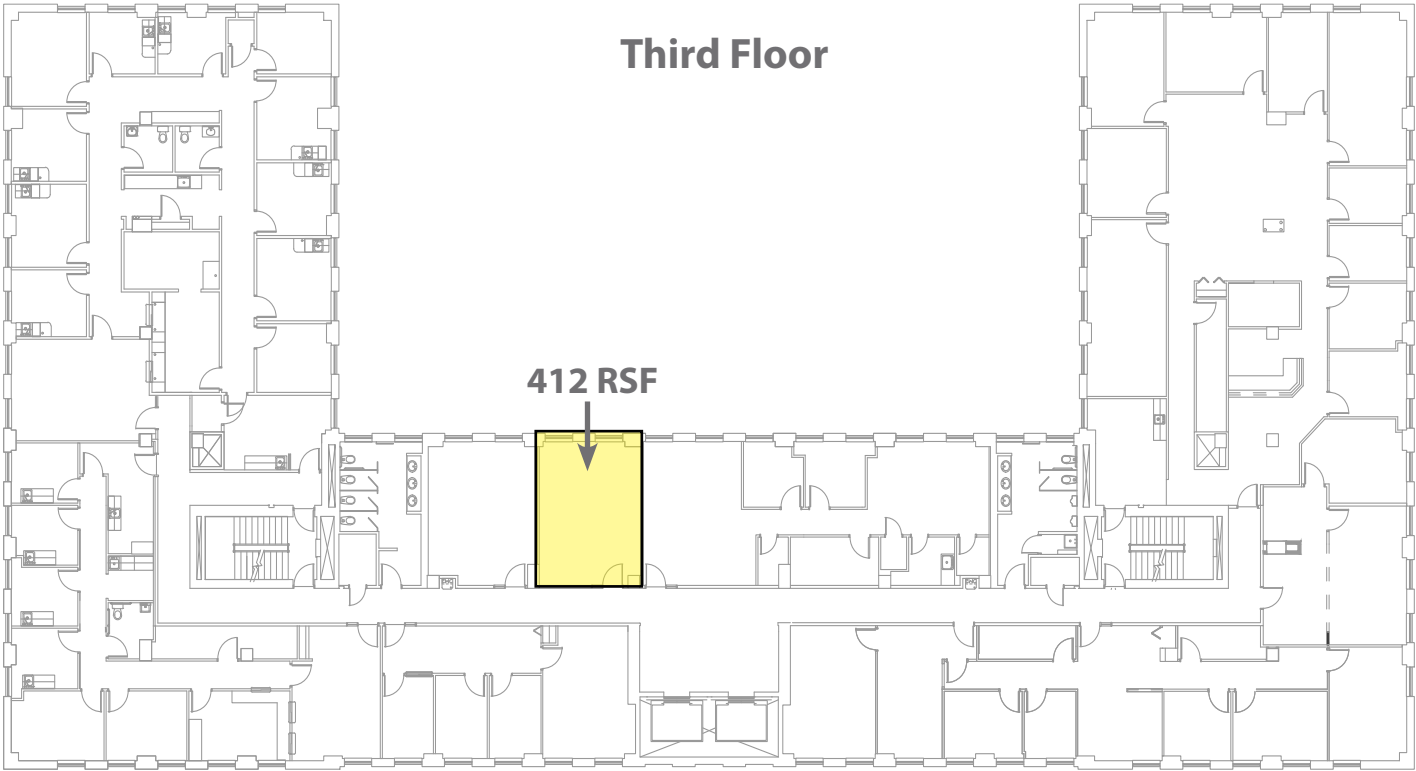
- The offices are conveniently located at the Edgewood/ Swissvale exit just off of the Parkway East (I-376)
- To the East, Monroeville and the PA Turnpike (I-76) are only 6 miles away and to the West, Pittsburgh's CBD is only 7 miles away
- Flexible floor plans are available to fit your needs - large or small
- Ample free parking
- On-site property management
- Full service lease includes all utilities and janitorial services

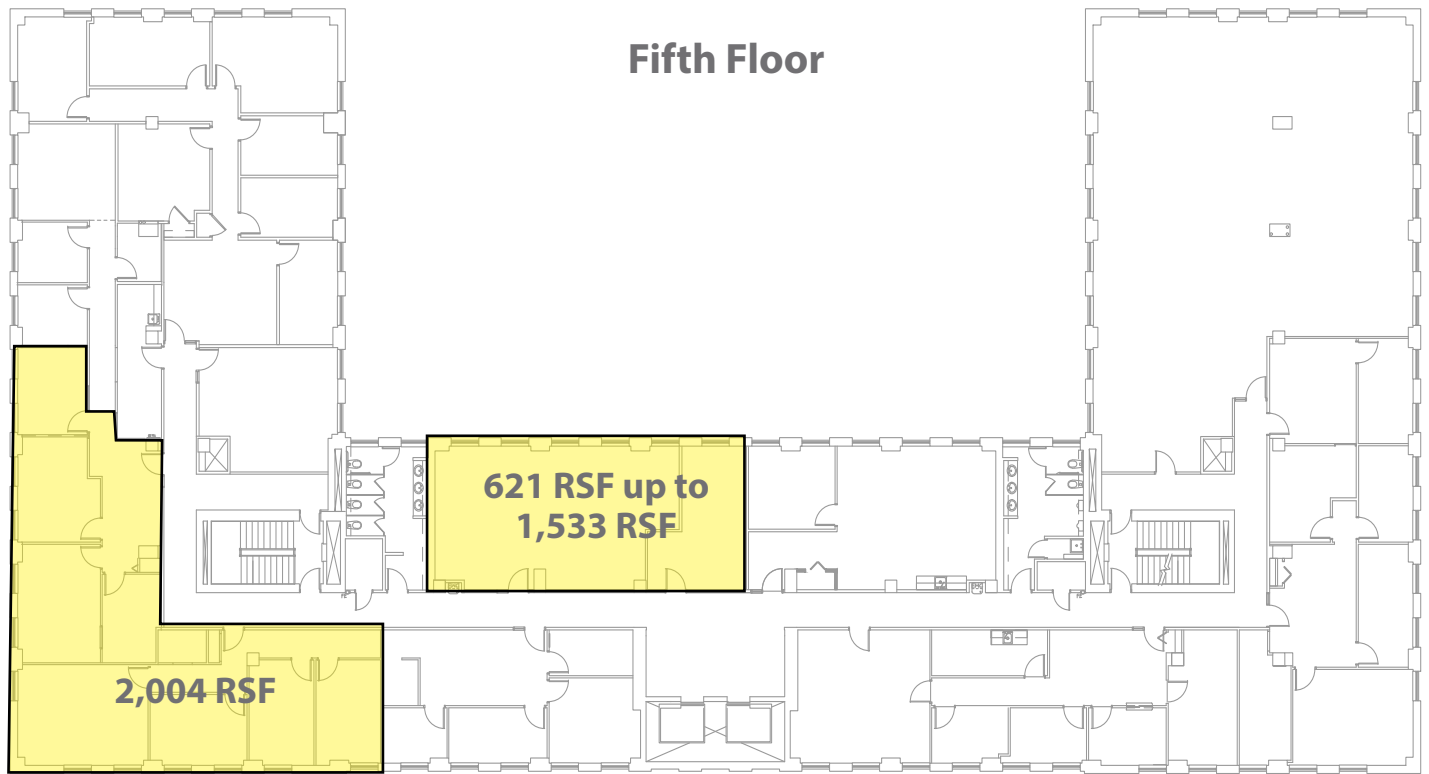
2,540 RSF

Second Floor



Third Floor





For more information please contact:

Jeffrey A. Deitrick, SIOR
Executive Vice President

Oxford Realty Services, Inc.

412.261.0200, ext 3473

jdeitrick@oxfordrealtyservices.com

OXFORD
REALTY SERVICES, INC.

2545 Railroad Street - Suite 300

Pittsburgh, PA 15222

www.oxfordrealtyservices.com

Although all information furnished regarding property for sale, rental or financing is from sources deemed reliable, such information has not been verified, and no express representation is made nor is any to be implied as to the accuracy thereof, and it is submitted subject to errors, omissions, change of price, rental or other conditions, prior sale, lease or financing, or withdrawal without notice. Rental terms and all dimensions are approximate and specifications are subject to change without notice. Oxford Realty Services, Inc., an independent real estate services company.