

## Towne Centre Offices

1789 South Braddock Avenue, Pittsburgh, PA 15218



### Building **Size**

93,068 RSF

### Available **Premises**

#### Second Floor

- 2,253 RSF
- 2,540 RSF (Medical)
- 7,274 RSF

#### Third Floor

- 4,082 RSF

#### Fifth Floor

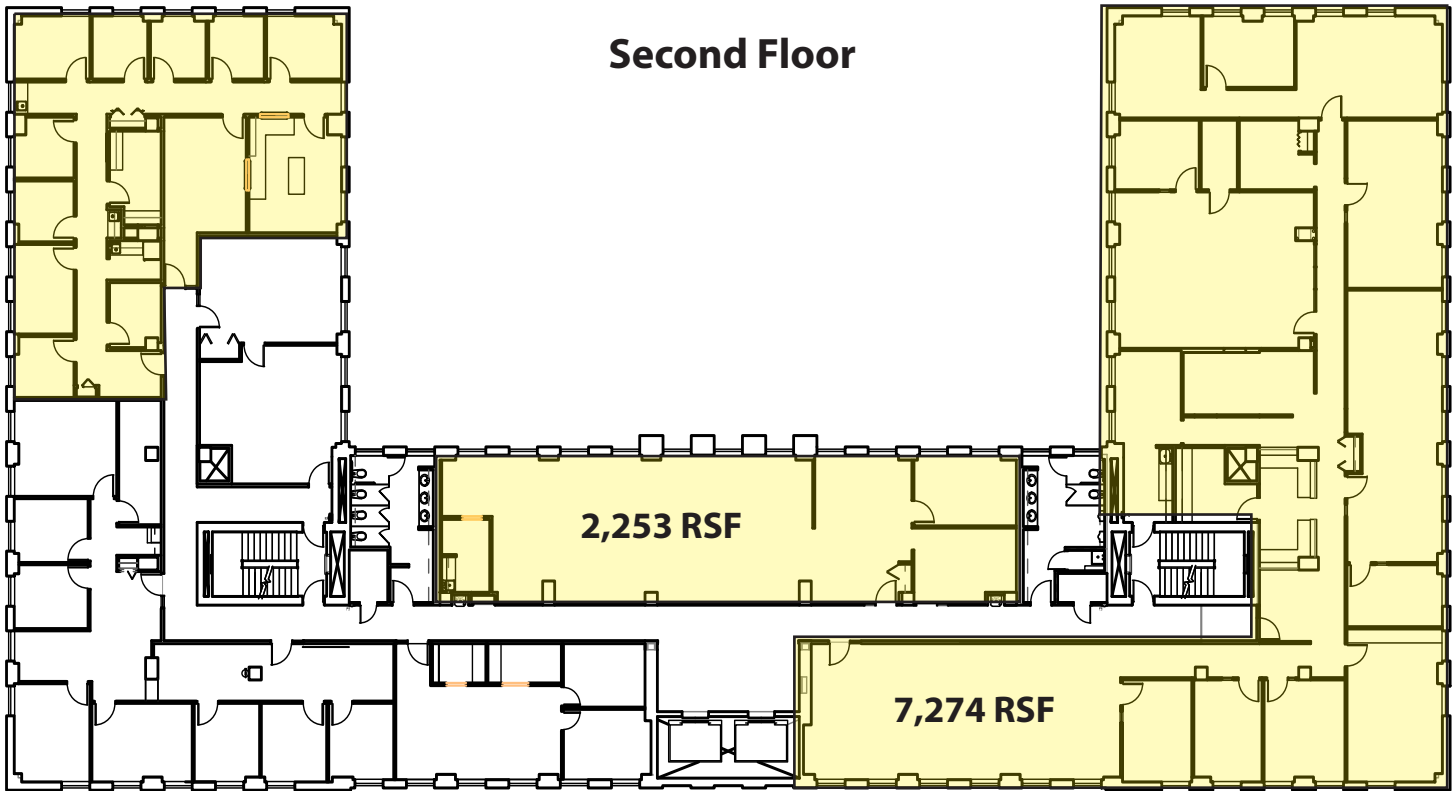
- 500 RSF
- 621 RSF
- 2,004 RSF

### Property **Highlights**

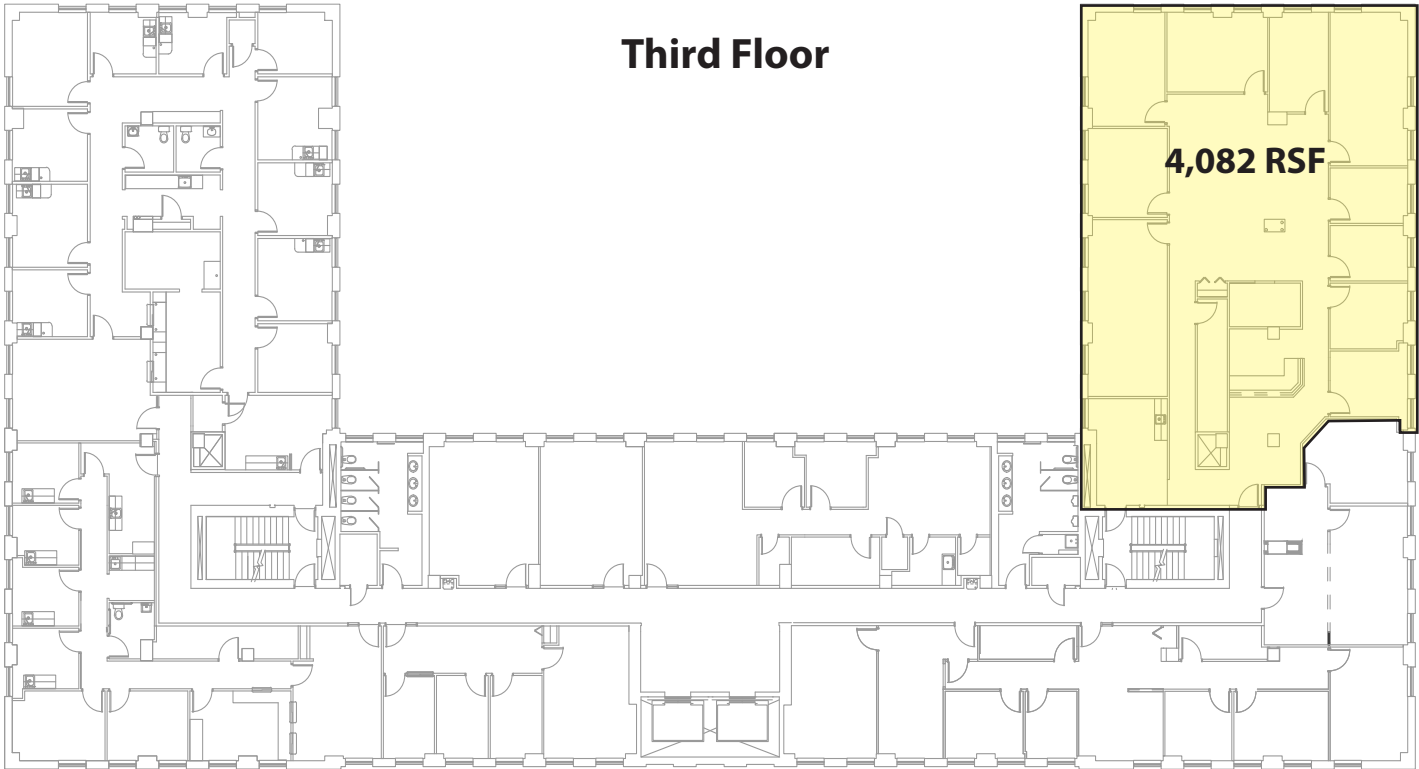
- The offices are conveniently located at the Edgewood/ Swissvale exit just off of the Parkway East (I-376)
- To the East, Monroeville and the PA Turnpike (I-76) are only 6 miles away and to the West, Pittsburgh's CBD is only 7 miles away
- Flexible floor plans are available to fit your needs - large or small
- Ample free parking
- On-site property management
- Full service lease includes all utilities and janitorial services

2,540 RSF

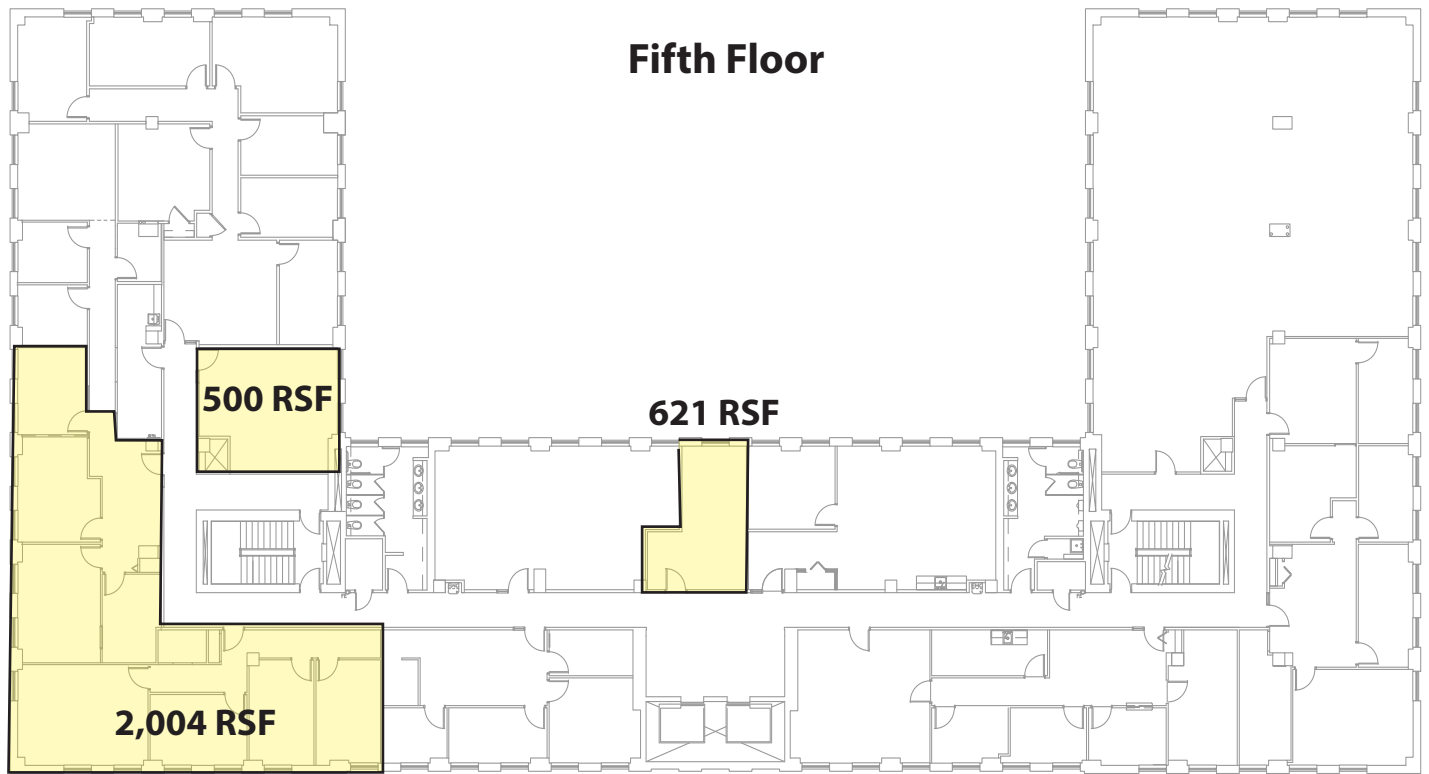
Second Floor



Third Floor







For more information please contact:

**Spencer Baker**

Associate

**Oxford Realty Services, Inc.**

412.261.0200, ext 3460

sbaker@oxfordrealtyservices.com

**Taylor N. Iaboni**

Vice President

**Oxford Realty Services, Inc.**

412.261.0200, ext 3493

tiaboni@oxfordrealtyservices.com

**OXFORD**

**REALTY SERVICES, INC.**

2545 Railroad Street

Pittsburgh, PA 15222

[www.oxfordrealtyservices.com](http://www.oxfordrealtyservices.com)

Although all information furnished regarding property for sale, rental or financing is from sources deemed reliable, such information has not been verified, and no express representation is made nor is any to be implied as to the accuracy thereof, and it is submitted subject to errors, omissions, change of price, rental or other conditions, prior sale, lease or financing, or withdrawal without notice. Rental terms and all dimensions are approximate and specifications are subject to change without notice. Oxford Realty Services, Inc., an independent real estate services company.