

NOW LEASING



Towne Centre Offices

1789 S. Braddock Avenue | Pittsburgh, PA 15218

PROPERTY DESCRIPTION

BUILDING SIZE

93,068 RSF

AVAILABLE PREMISES

Second Floor

-910 RSF
-2,253 RSF
-2,540 RSF (Medical)
-7,274 RSF

Third Floor

-4,082 RSF

Fifth Floor

-500 RSF
-621 RSF
-2,004 RSF

PROPERTY HIGHLIGHTS

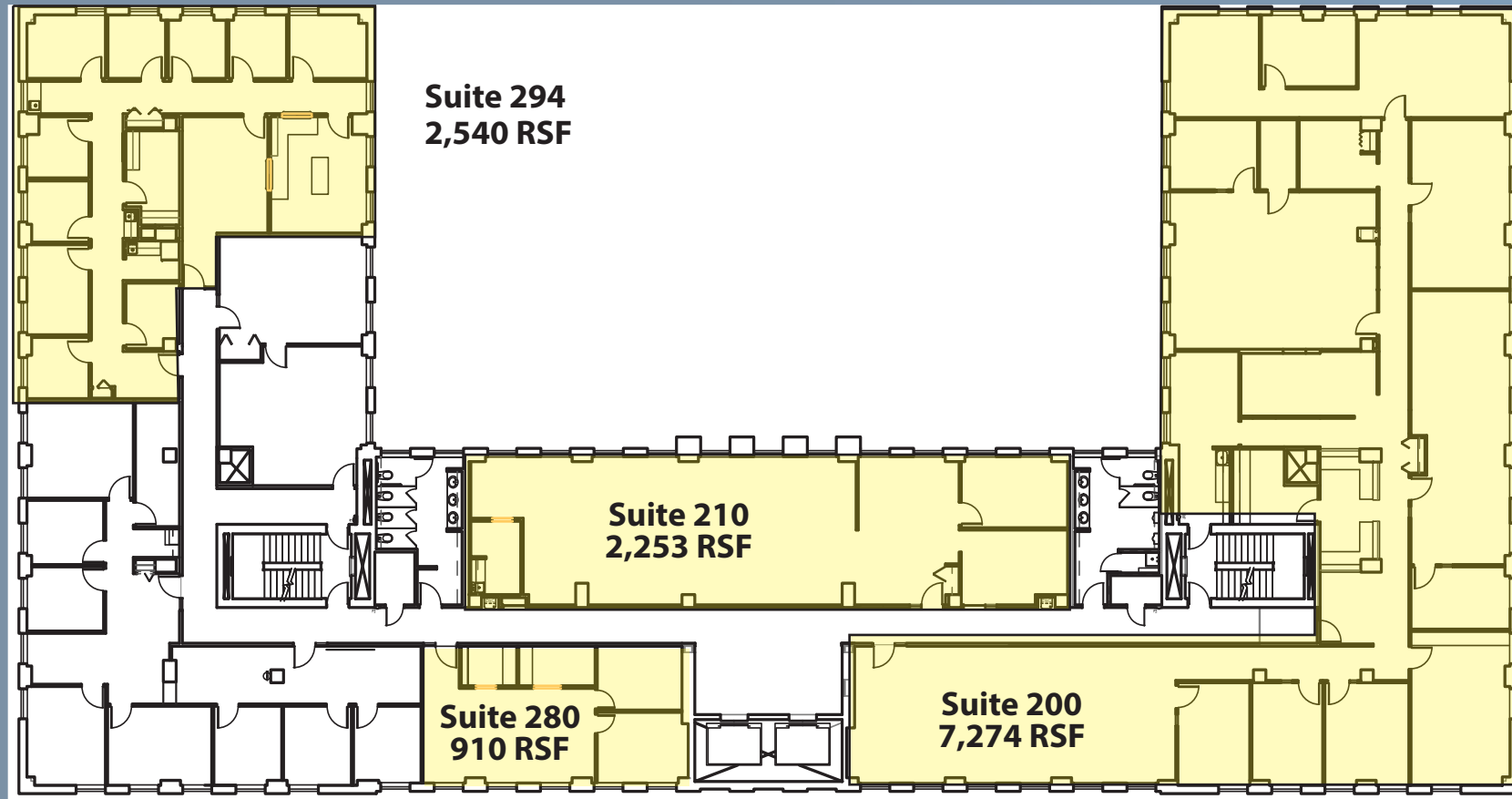
- The offices are conveniently located at the Edgewood/ Swissvale exit just off of the Parkway East (I-376)
- To the East, Monroeville and the PA Turnpike (I-76) are only 6 miles away and to the West, Pittsburgh's CBD is only 7 miles away
- Flexible floor plans are available to fit your needs - large or small
- Ample free parking
- On-site property management
- Full service lease includes all utilities and janitorial services



TOWNE CENTRE OFFICES

FLOOR PLANS

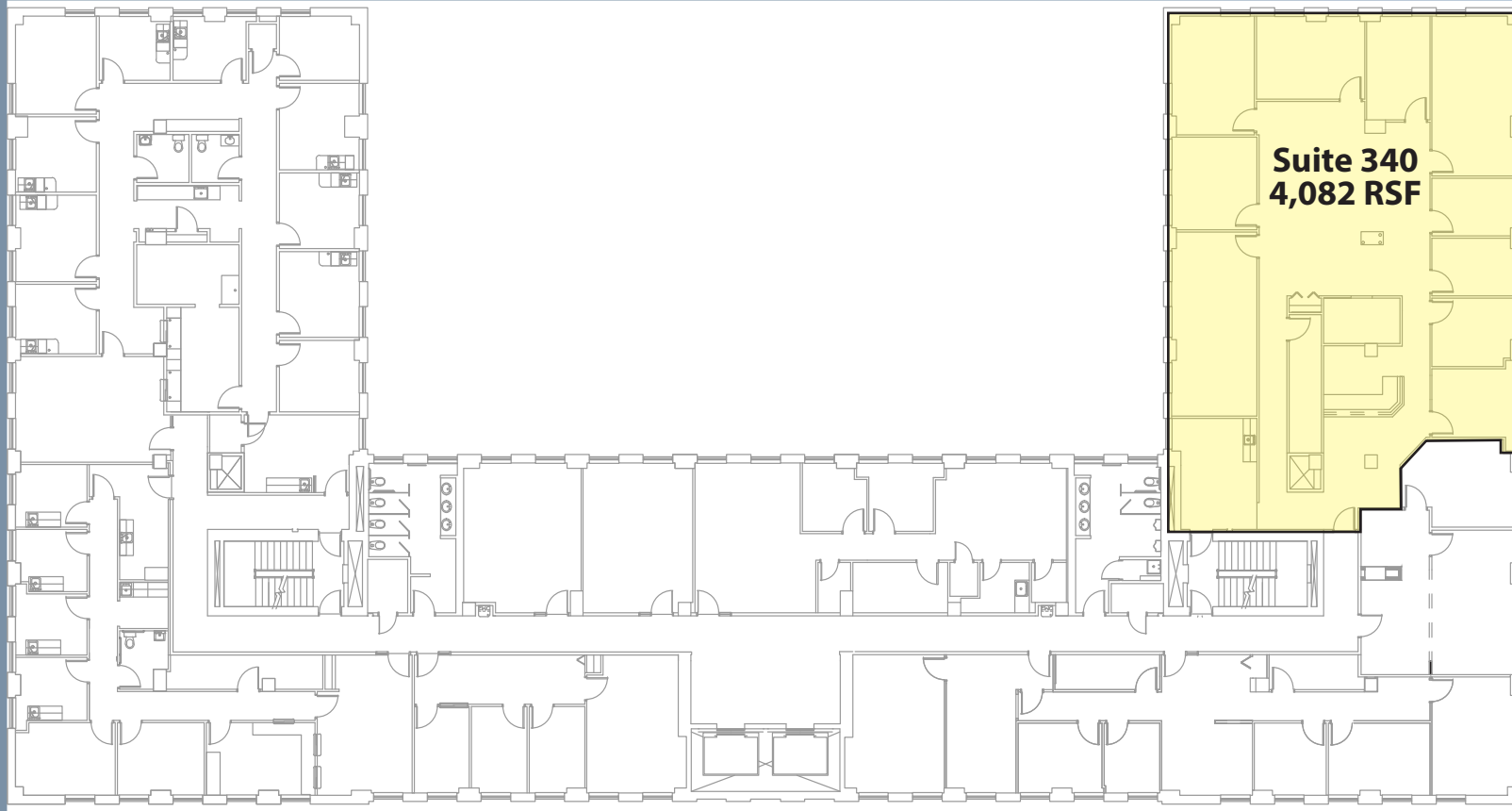
2nd FLOOR



TOWNE CENTRE OFFICES

FLOOR PLANS

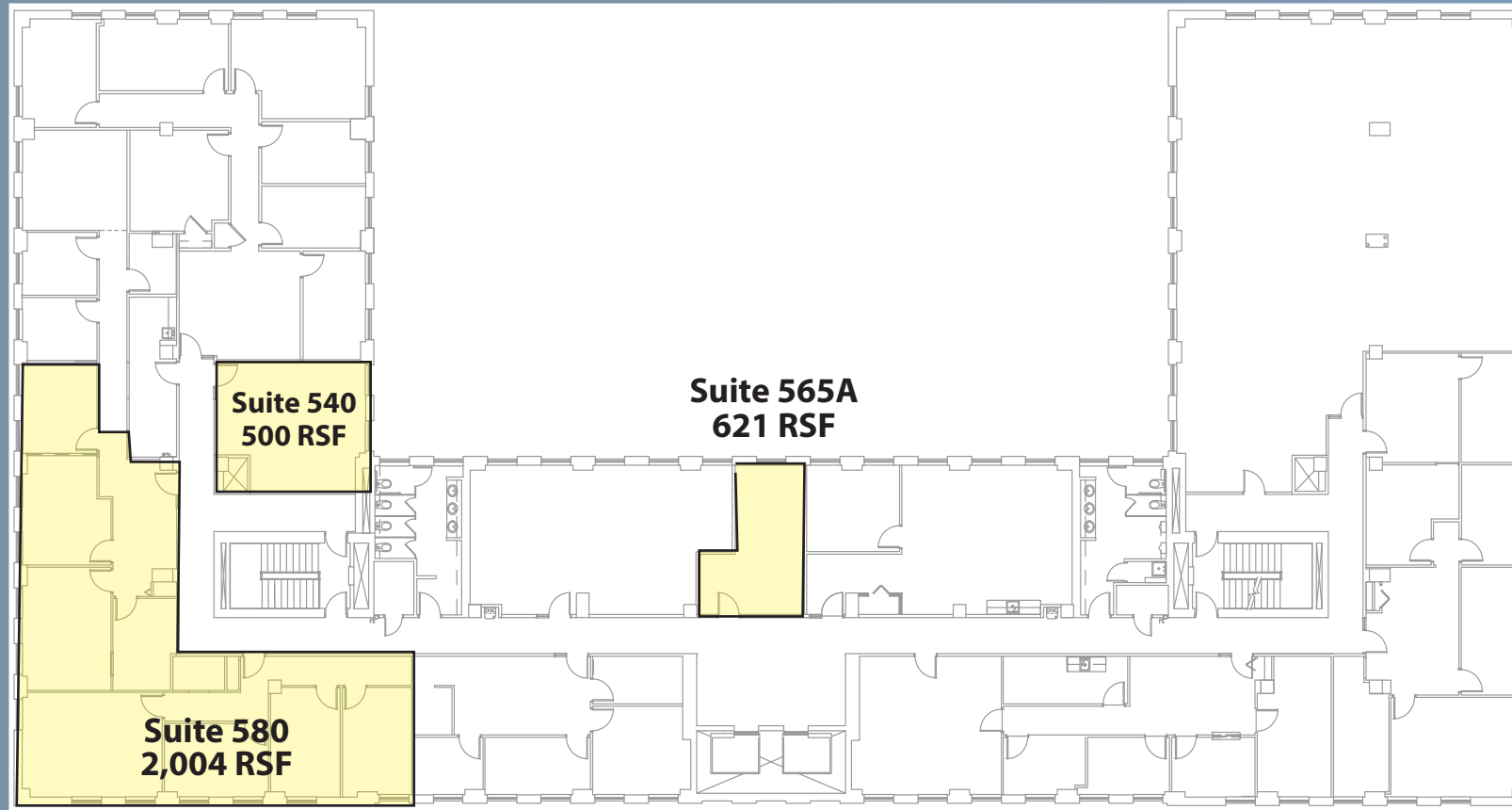
3rd FLOOR



TOWNE CENTRE OFFICES

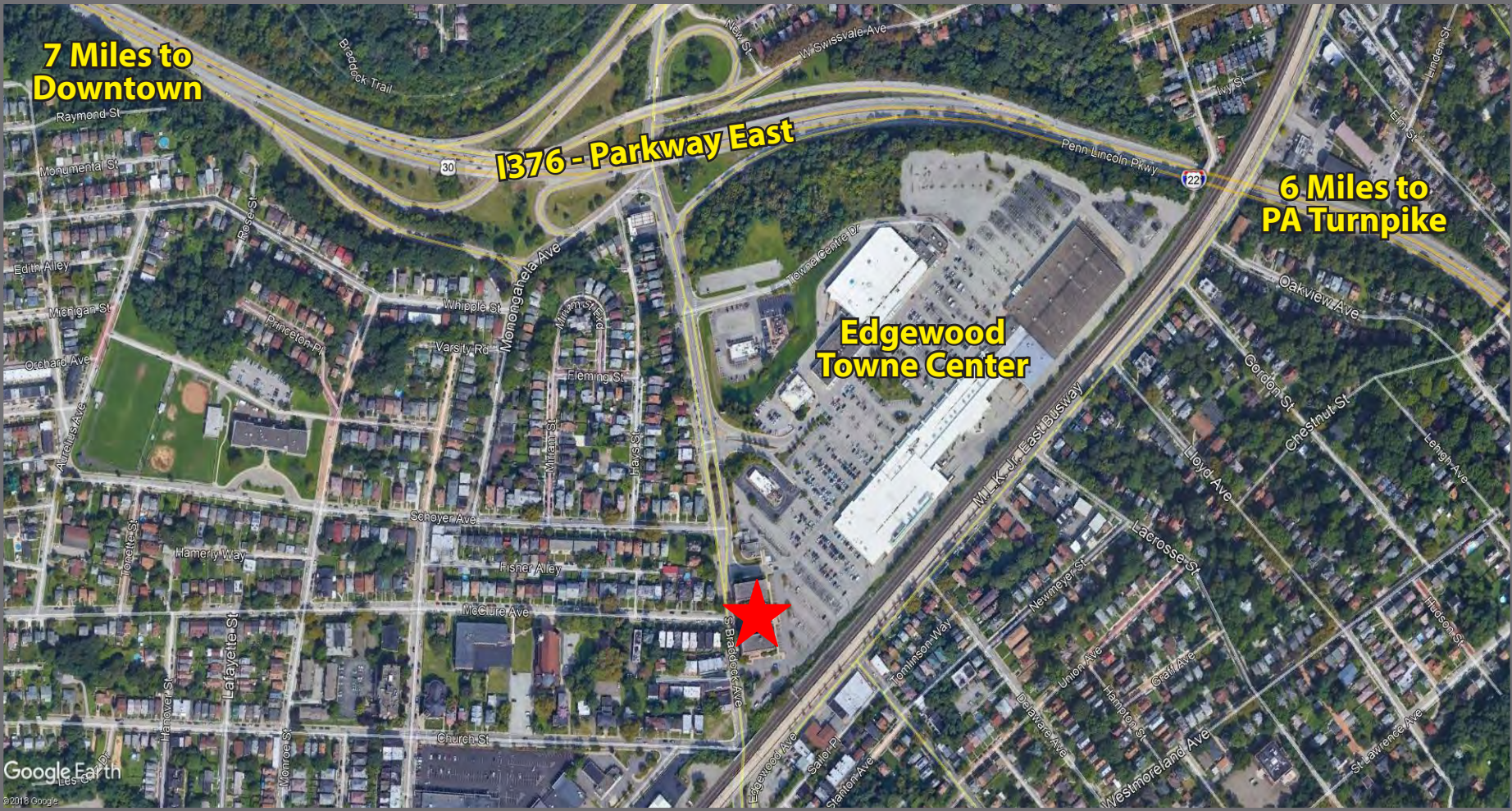
FLOOR PLANS

5th FLOOR



TOWNE CENTRE OFFICES

PROPERTY LOCATION



TOWNE CENTRE OFFICES

For more information please contact:

Spencer Baker
Associate

412.261.0200, ext 3460
sbaker@oxfordrealtyservices.com

Taylor N. Iaboni
Vice President

412.261.0200, ext 3493
tiaboni@oxfordrealtyservices.com

Oxford Realty Services, Inc.

2545 Railroad Street
Pittsburgh, PA 15222
www.oxfordrealtyservices.com

Towne Centre Offices | Pittsburgh, PA 15218