

## Weyman Plaza

300 Weyman Road, Pittsburgh, PA 15236



### Available Premises

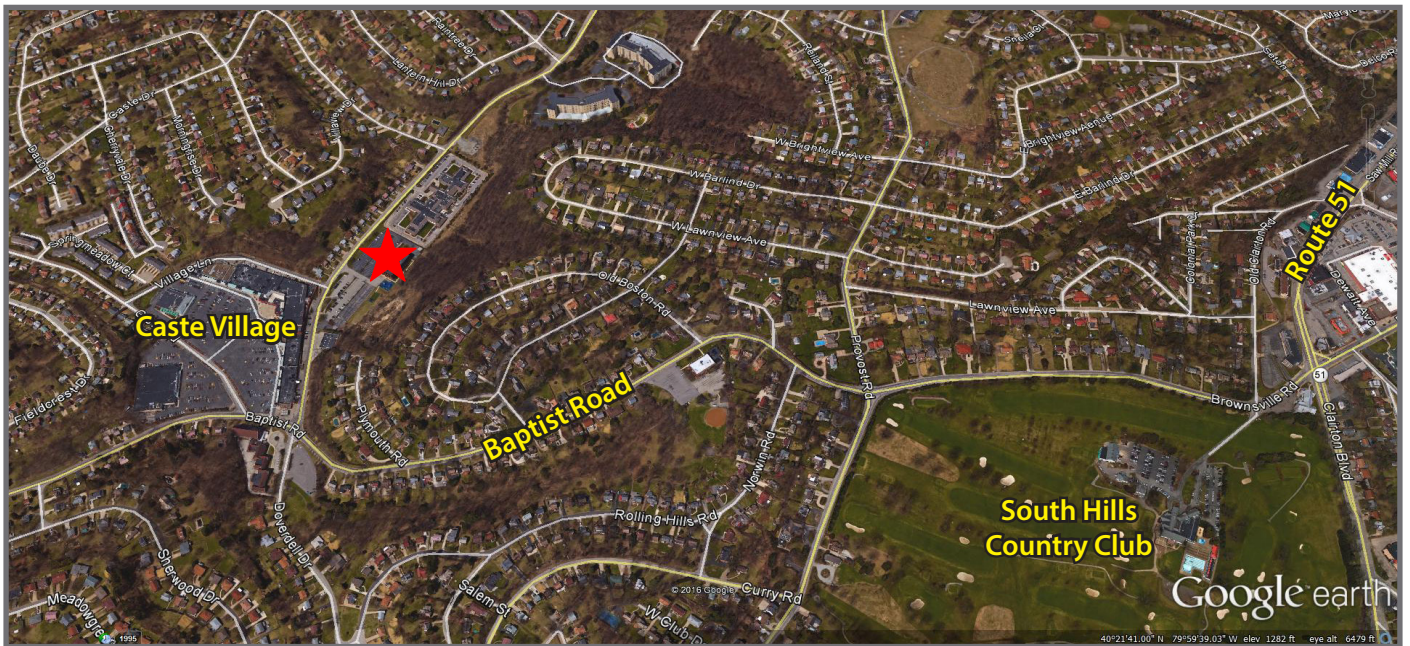
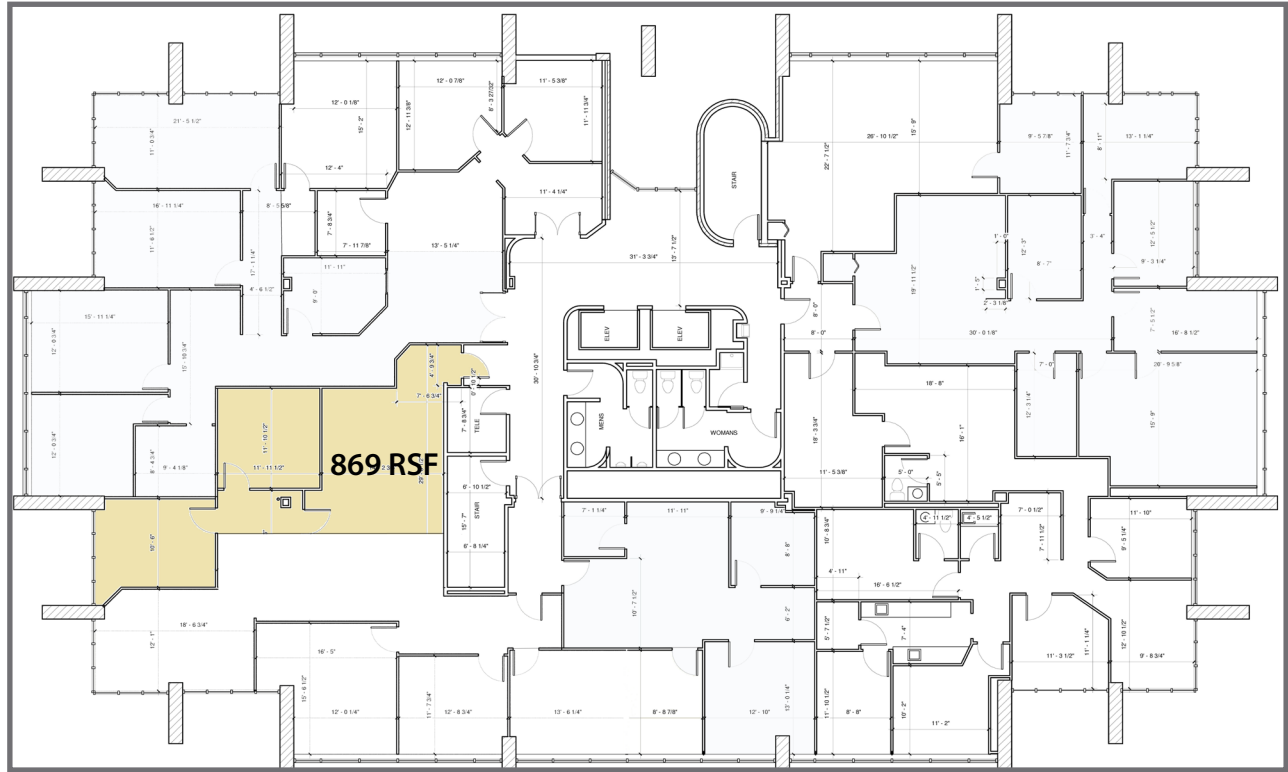
#### Second Floor

- 869 RSF

### Property Highlights

- 4-Stories - 40,857 SF Total
- Class A Office Building
- Expansive natural light
- Efficient floor plates
- Turnkey construction at competitive full-service rates
- Extremely convenient location - just steps from Caste Village in the heart of the South Hills marketplace - offering easy access to shopping, banking and a variety of eateries

## Second Floor



For more information please contact:

**Spencer L. Baker**  
Associate

**Oxford Realty Services, Inc.**  
412.261.0200, ext 3460  
sbaker@oxfordrealtyservices.com

# OXFORD

REALTY SERVICES, INC.

2865 Railroad Street, Suite 202  
Pittsburgh, PA 15222  
www.oxfordrealtyservices.com

Although all information furnished regarding property for sale, rental or financing is from sources deemed reliable, such information has not been verified, and no express representation is made nor is any to be implied as to the accuracy thereof, and it is submitted subject to errors, omissions, change of price, rental or other conditions, prior sale, lease or financing, or withdrawal without notice. Rental terms and all dimensions are approximate and specifications are subject to change without notice. Oxford Realty Services, Inc., an independent real estate services company.