

Tax Parcel Map



DEMOGRAPHICS

	1-MILE	3-MILE	5-MILE
Population	9,071	68,266	187,819
Median HH Income	\$76,717	\$91,126	\$94,748

For more information please contact:

Joseph F. Tosi, SIOR
Senior Vice President

Oxford Realty Services, Inc.
412.261.0200, ext 3471
jtosi@oxfordrealtyservices.com

OXFORD

REALTY SERVICES, INC.

2545 Railroad Street - Suite 300
Pittsburgh, PA 15222
www.oxfordrealtyservices.com

Although all information furnished regarding property for sale, rental or financing is from sources deemed reliable, such information has not been verified, and no express representation is made nor is any to be implied as to the accuracy thereof, and it is submitted subject to errors, omissions, change of price, rental or other conditions, prior sale, lease or financing, or withdrawal without notice. Rental terms and all dimensions are approximate and specifications are subject to change without notice. Oxford Realty Services, Inc., an independent real estate services company.

OXFORD

REALTY SERVICES, INC.

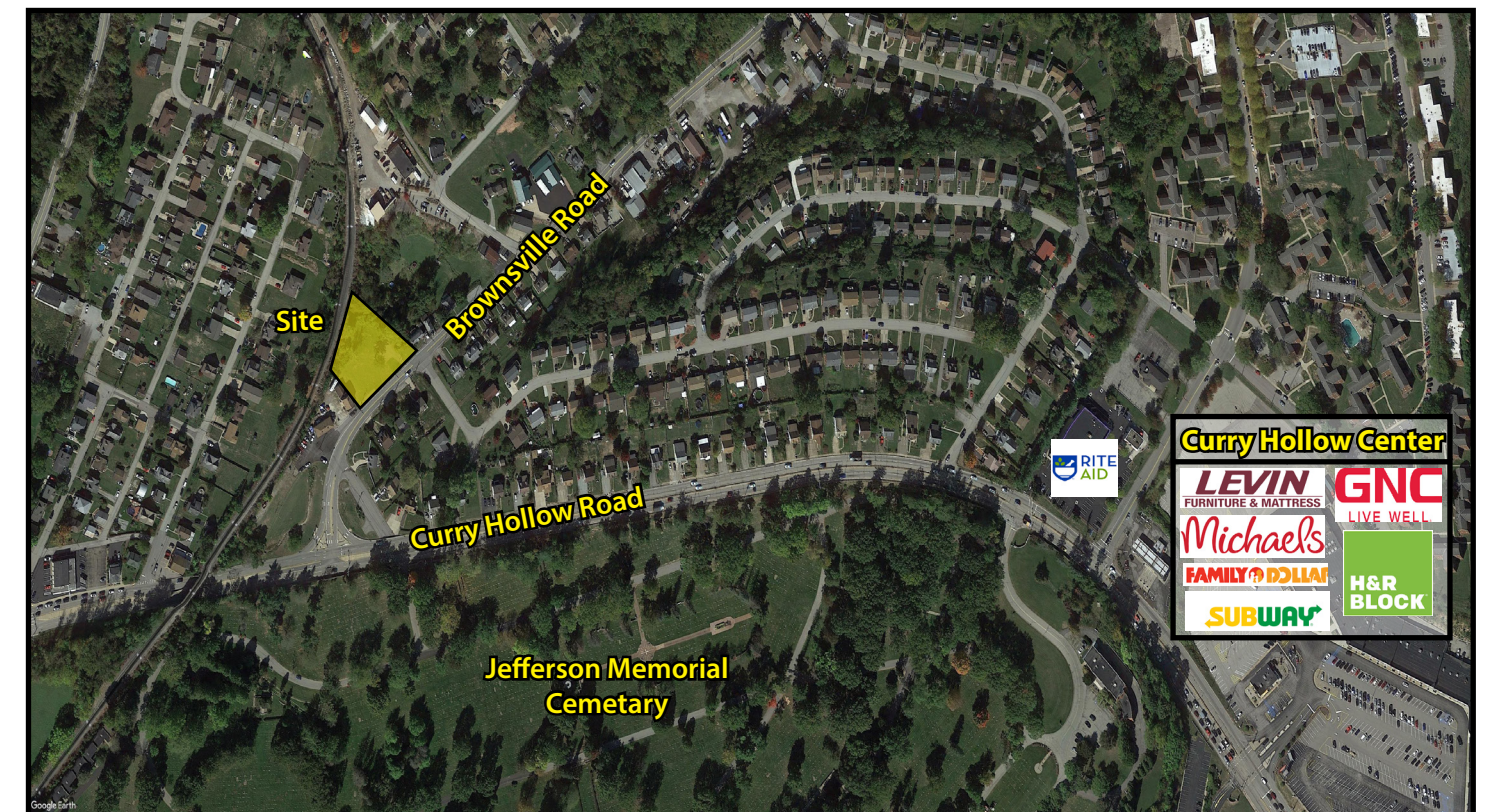
FOR SALE

Real Estate Brokerage Services

Office | Industrial | Retail | Investing | Consulting

Brownsville Road

Pittsburgh, PA 15236 (Baldwin Boro)



Site Size

29,755 SF or 0.683 Acres

Parcel ID

473-D-21; 473-D-24; 473-D-26
(Allegheny County)

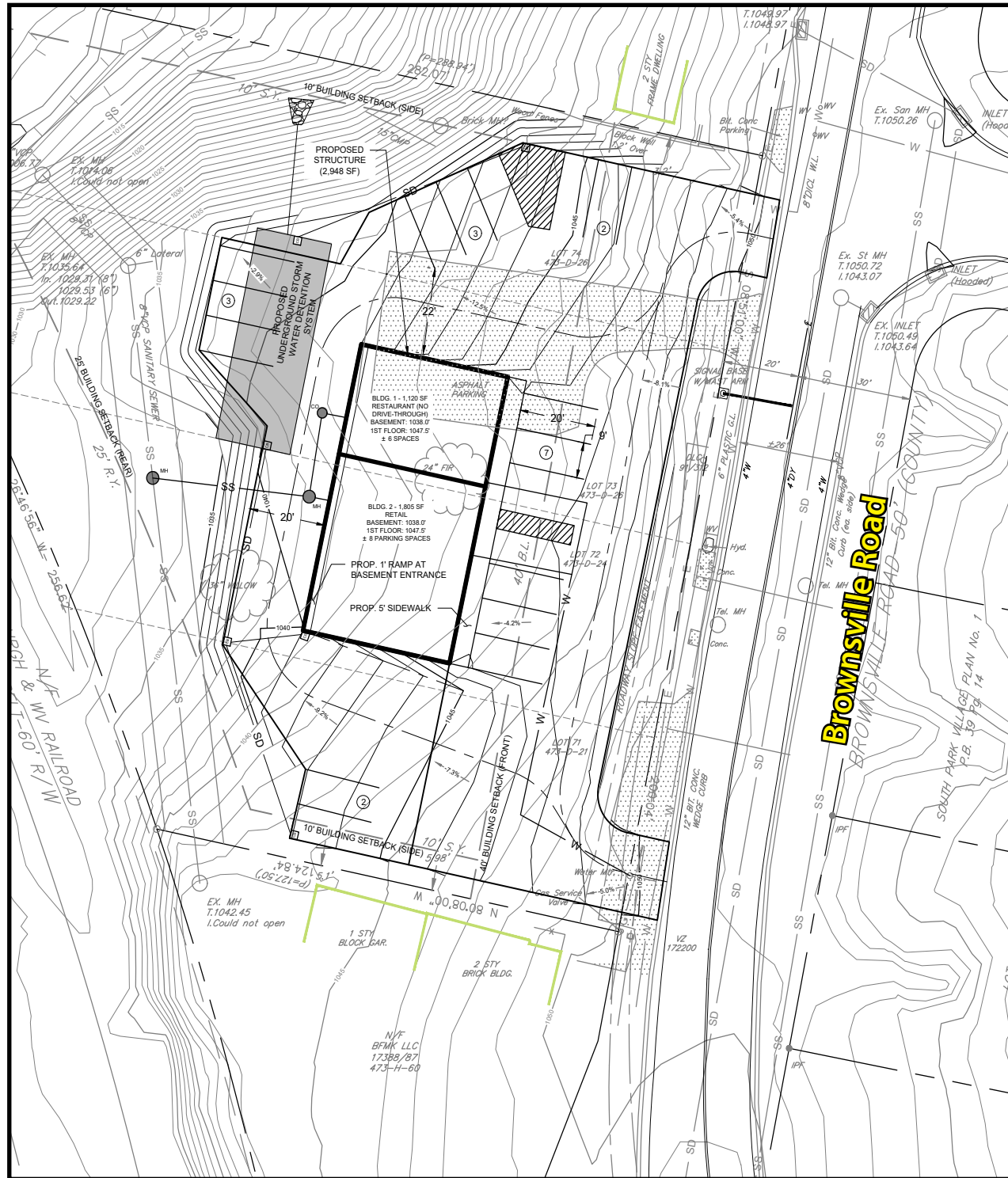
Sale Price

\$225,000

Property Highlights

- 202' Frontage
- All public utilities on-site
- Multiple conceptual designs in place
- Average Traffic Count - Brownsville Road @ Curry Hollow Road - 21,907 vehicles/day
- Ideal for retail, service office, and medical
- Zoning - C-1 (Neighborhood Commercial District)

Concept Plan 1 - Retail Building - 2,948 SF



Concept Plan 2 - Single Story Building - 4,500 SF

