

Foster Plaza 8

730 Holiday Drive, Pittsburgh, PA 15220



Available Premises

Second Floor

- 15,619 RSF

Third Floor

- 2,099 RSF
- Up to 11,834 RSF Contiguous
 - 2,497 RSF
 - 4,245 RSF
 - 5,092 RSF

Fourth Floor

- 2,579 RSF

Property Highlights

- Premiere suburban office campus
- Free Parking, up to 5 spaces per 1,000 SF
- Fitness Center with Showers (exclusive to Building)
- Wi-Fi enabled and furnished indoor and outdoor common areas
- Anchor Highwall Signage Opportunity

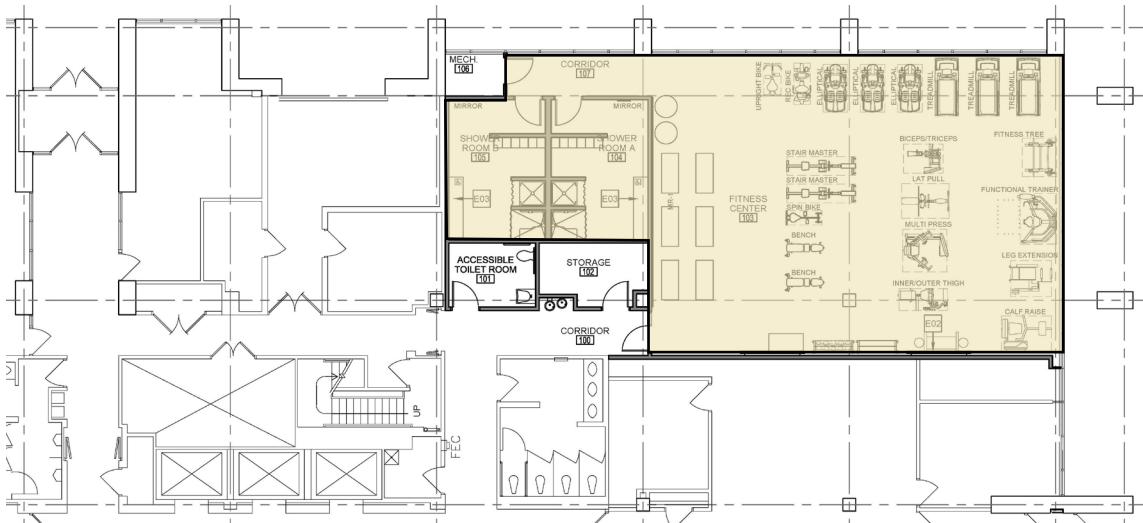
Foster Plaza Campus Highlights

- Doubletree by Hilton and Pittsburgh Plaza Hotels
- Greentree Sportsplex
- Daycare Center (Foster 5)
- ATM & Foster's Cafe (Foster 10)
- Scolglio of Greentree (Foster 7)
- Greentree Medical Associates (Foster 5)

New Common Area Interiors

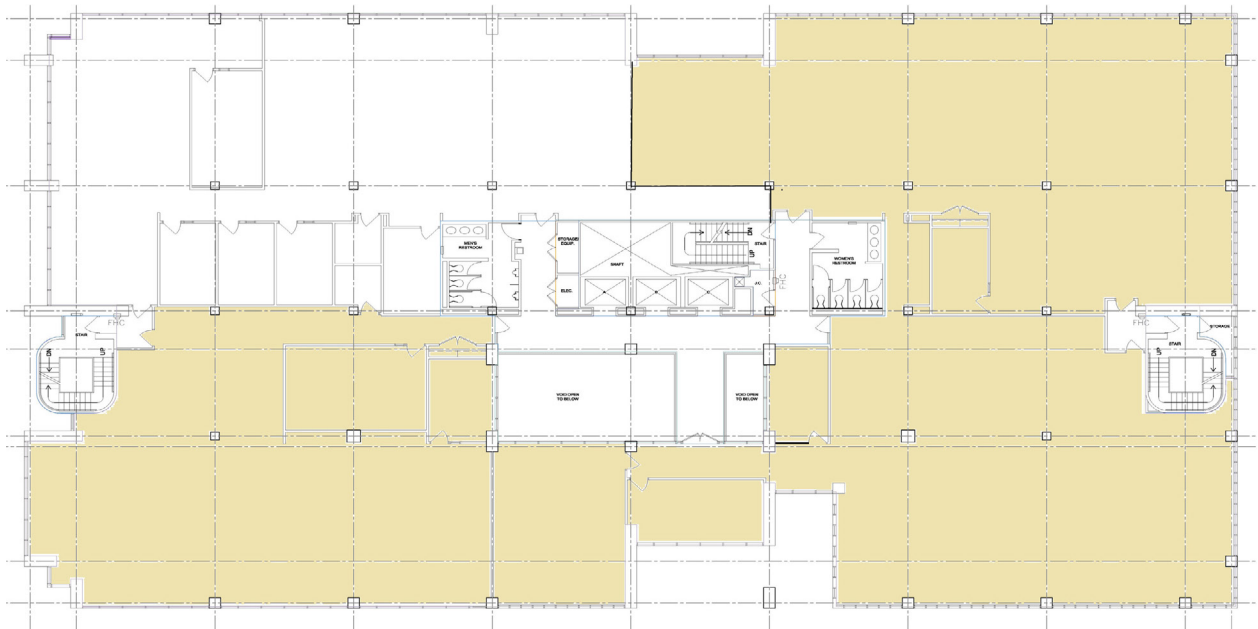


1st Floor Fitness Center





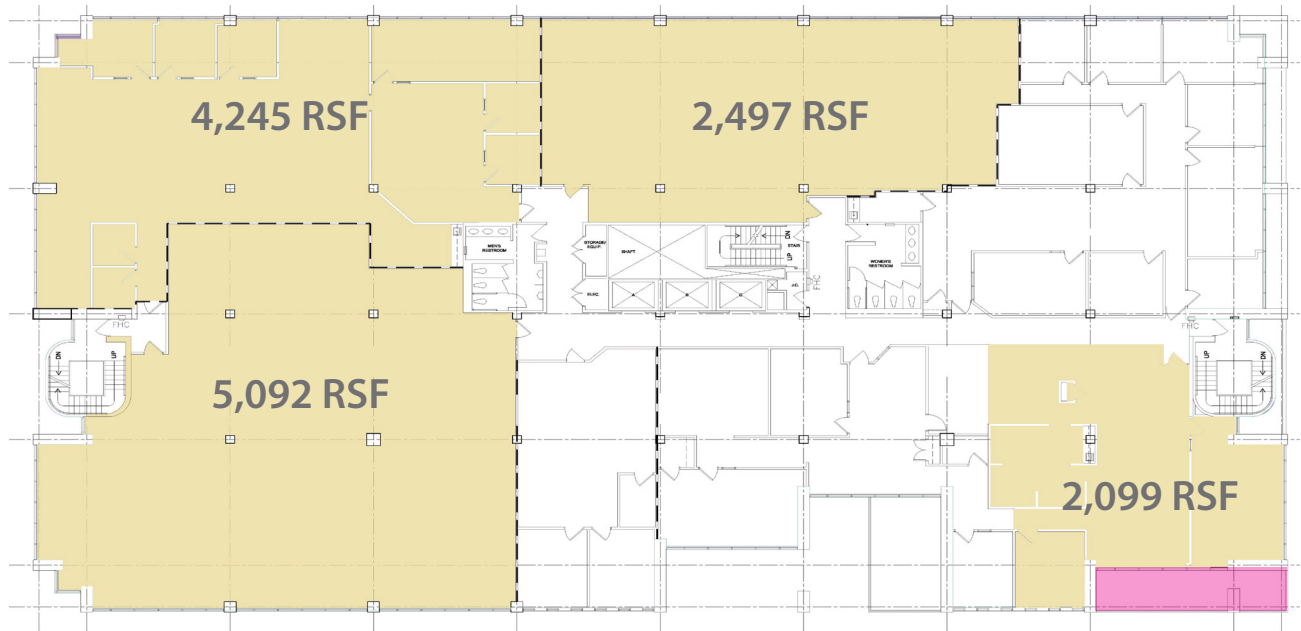
2nd Floor - 15,619 RSF



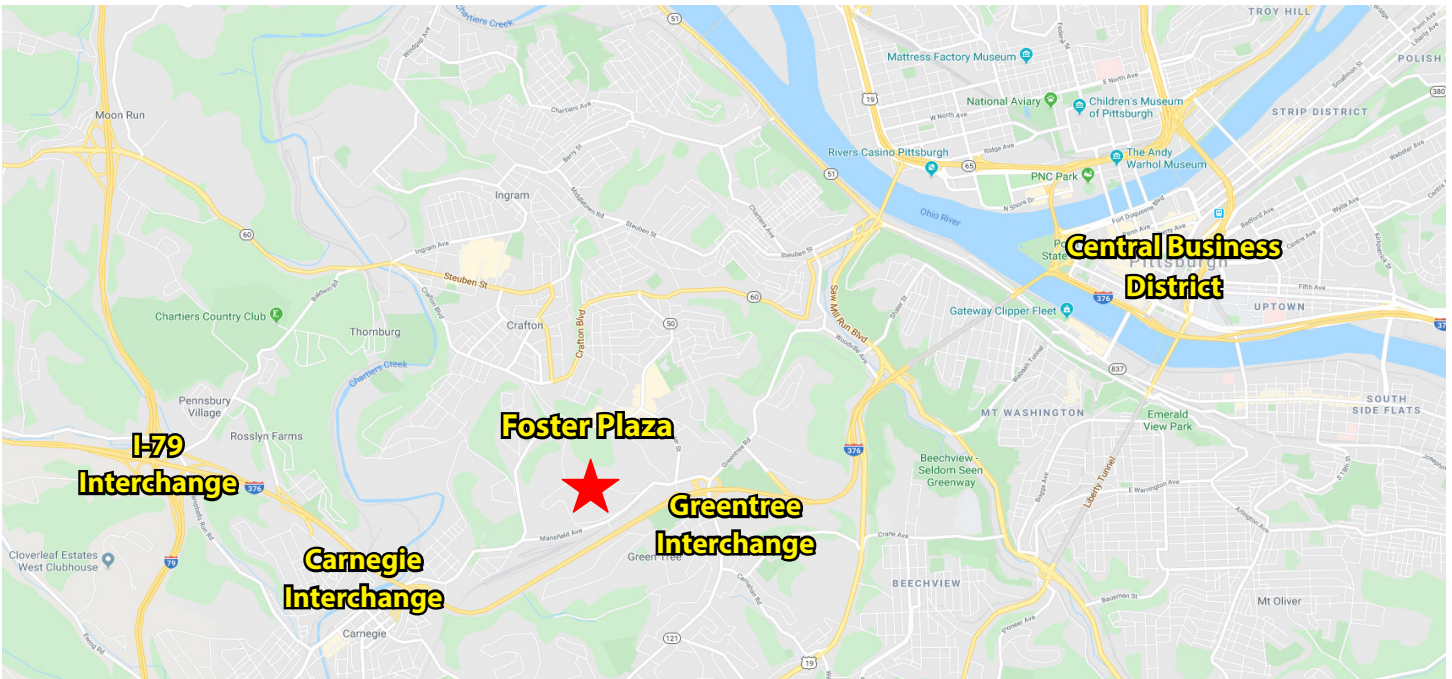
Abundant Natural Light - Panoramic Views



3rd Floor - Up to 11,834 RSF Contiguous



**Corner Suite
Features
Private Balcony**



For more information please contact:

Joe Tosi, SIOR
Senior Vice President

Oxford Realty Services, Inc.
412.261.0200, ext 3471
jtosi@oxfordrealtyervices.com

Jeffrey A. Deitrick, SIOR
Executive Vice President

Oxford Realty Services, Inc.
412.261.0200, ext 3473
jdeitrick@oxfordrealtyervices.com

OXFORD
REALTY SERVICES, INC.

2545 Railroad Street - Suite 300
Pittsburgh, PA 15222
www.oxfordrealtyervices.com

Although all information furnished regarding property for sale, rental or financing is from sources deemed reliable, such information has not been verified, and no express representation is made nor is any to be implied as to the accuracy thereof, and it is submitted subject to errors, omissions, change of price, rental or other conditions, prior sale, lease or financing, or withdrawal without notice. Rental terms and all dimensions are approximate and specifications are subject to change without notice. Oxford Realty Services, Inc., an independent real estate services company.