

OXFORD

REALTY SERVICES, INC.

FOR LEASE

Real Estate Brokerage Services

Office | Industrial | Retail | Investing | Consulting

M. Berger Industrial Park

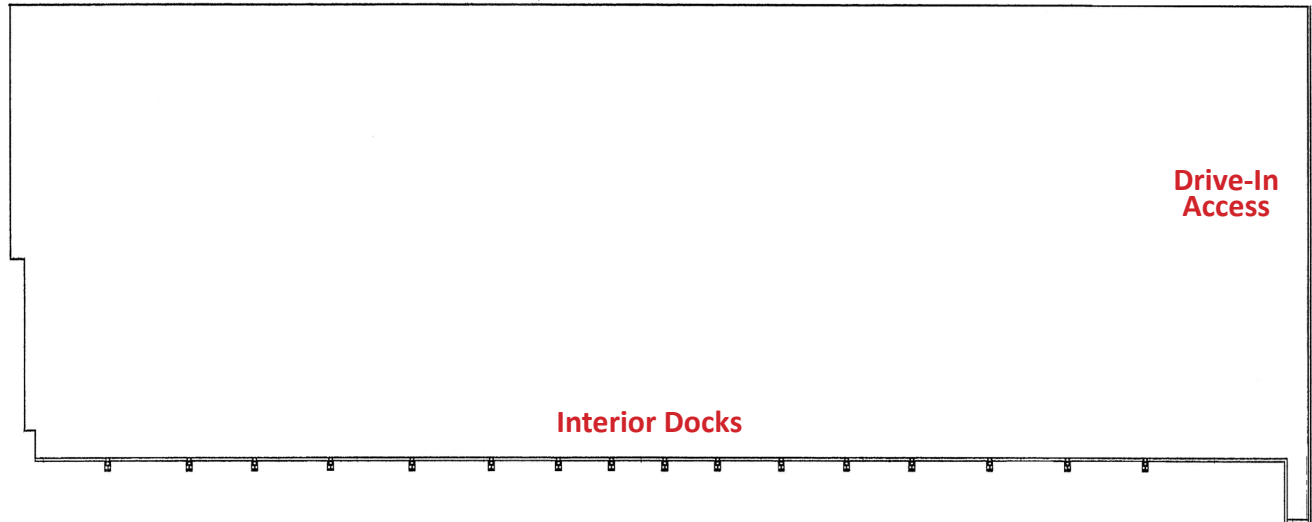
Bingham Street, Pittsburgh, PA 15203



Property **Highlights**

- Location:** South Side, City of Pittsburgh - Within walking distance to Station Square
- Address:** 401 Bingham Street, Pittsburgh, PA
- Type:** Warehouse, Storage & Light Assembly
Ideal for conversions to indoor sporting, including Pickleball, recreational, or entertainment venues
- Site Size:** 8.819 acres
- Building Area:** Approximately 209,676 SF
- Zoning:** RIV-IMU Industrial Mixed-Use Subdistrict

403 Bingham Street



Building Specifications

Area:
32,400 SF

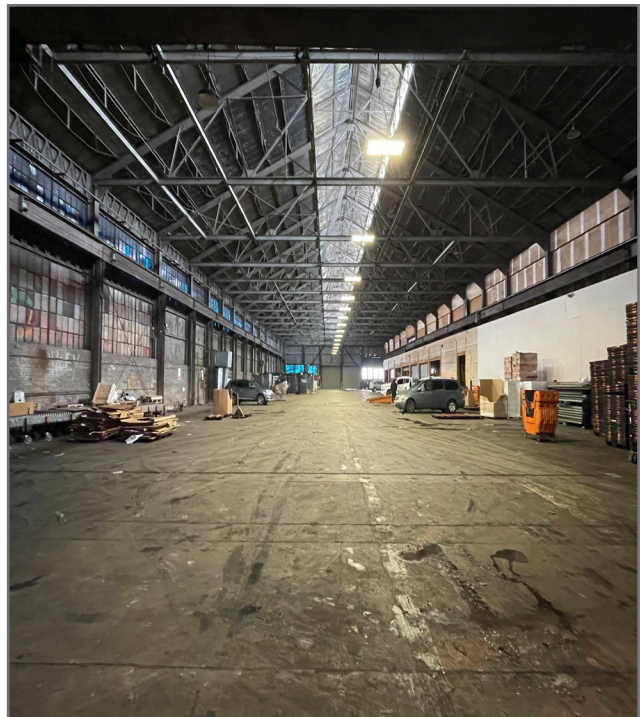
Ceiling Height:
25' Clear

Warehouse Lighting:
LED

Column Spacing:
Primarily Column Free

Drive-In Doors:
2 - 12'W x14'H Drive-In

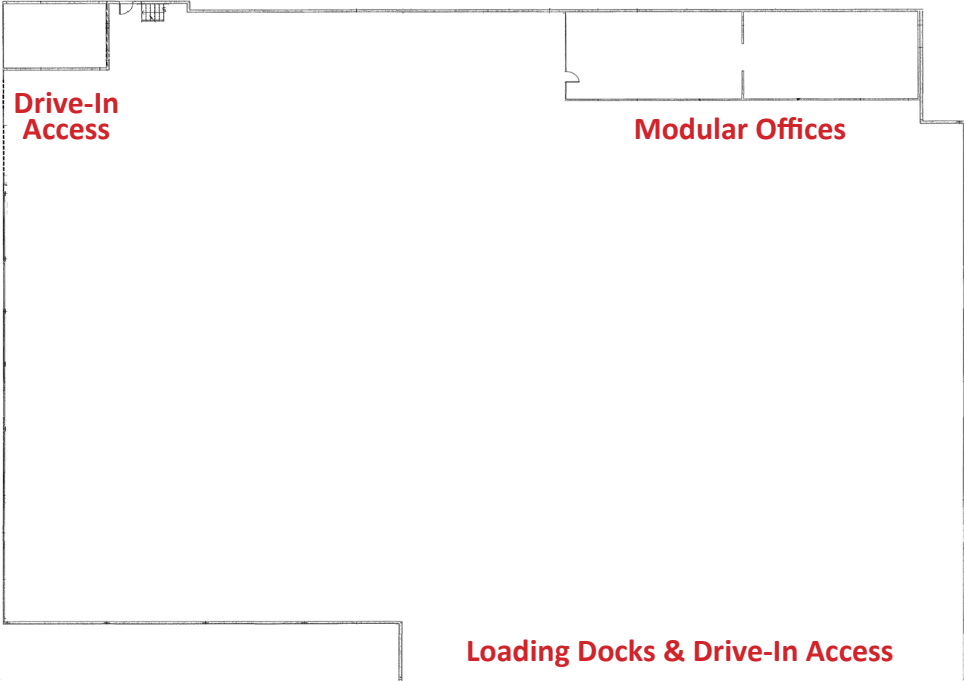
Electric Service:
Duquesne Light



415 Bingham Street

Building Specifications

- Area:
40,800 SF
- Column Spacing:
Primarily Column Free
- Ceiling Height:
25' Clear
- Dock Doors:
4 - Covered Overhead Doors
- Drive-In Doors:
2 - 12'W x14'H Drive-In
- Warehouse Lighting:
LED
- Electric Service:
Duquesne Light



423 Bingham Street

Building Specifications

Area:

45,000 SF - Up to 69,000 SF

Column Spacing:

Primarily Column Free

Ceiling Height:

25' Clear

Dock Doors:

4 - Covered Overhead Doors

Drive-In Doors:

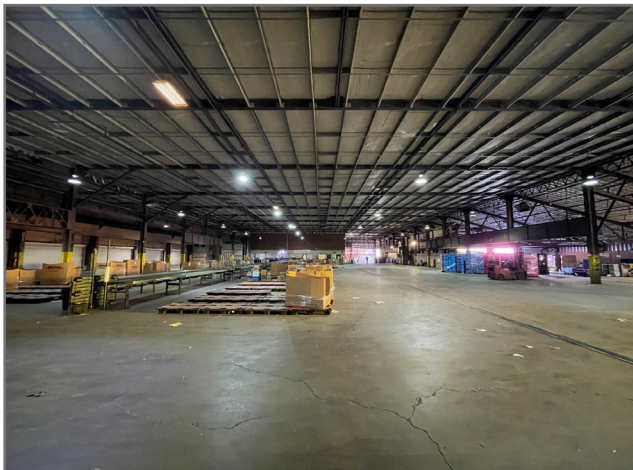
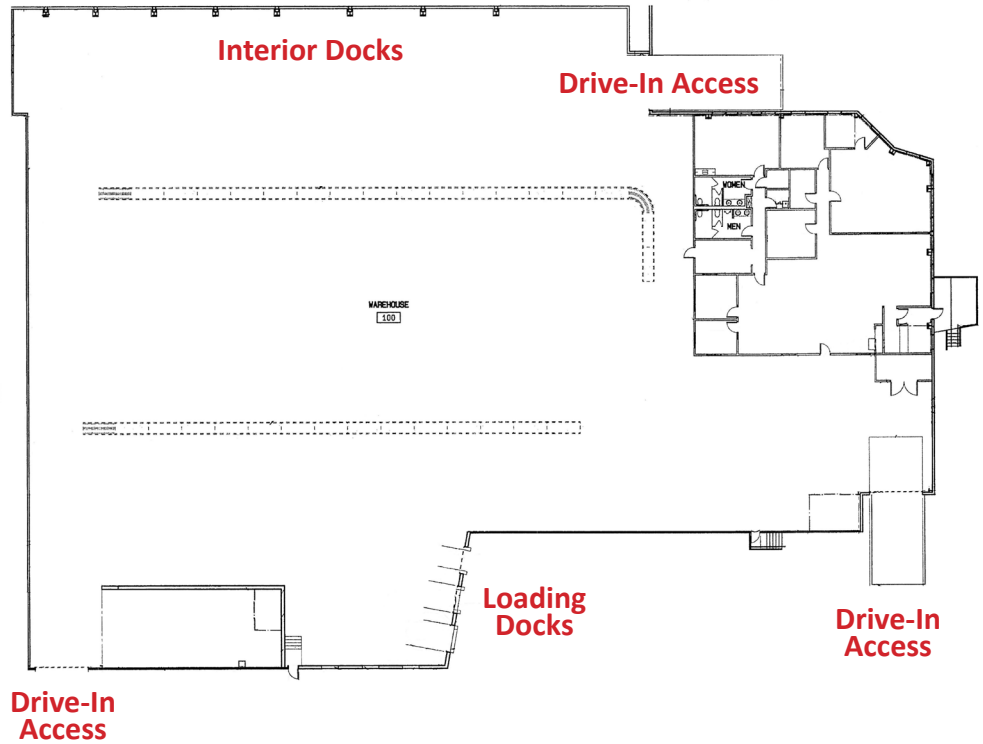
2 - 12'x12' Drive-In

Warehouse Lighting:

Mix of LED and metal halide

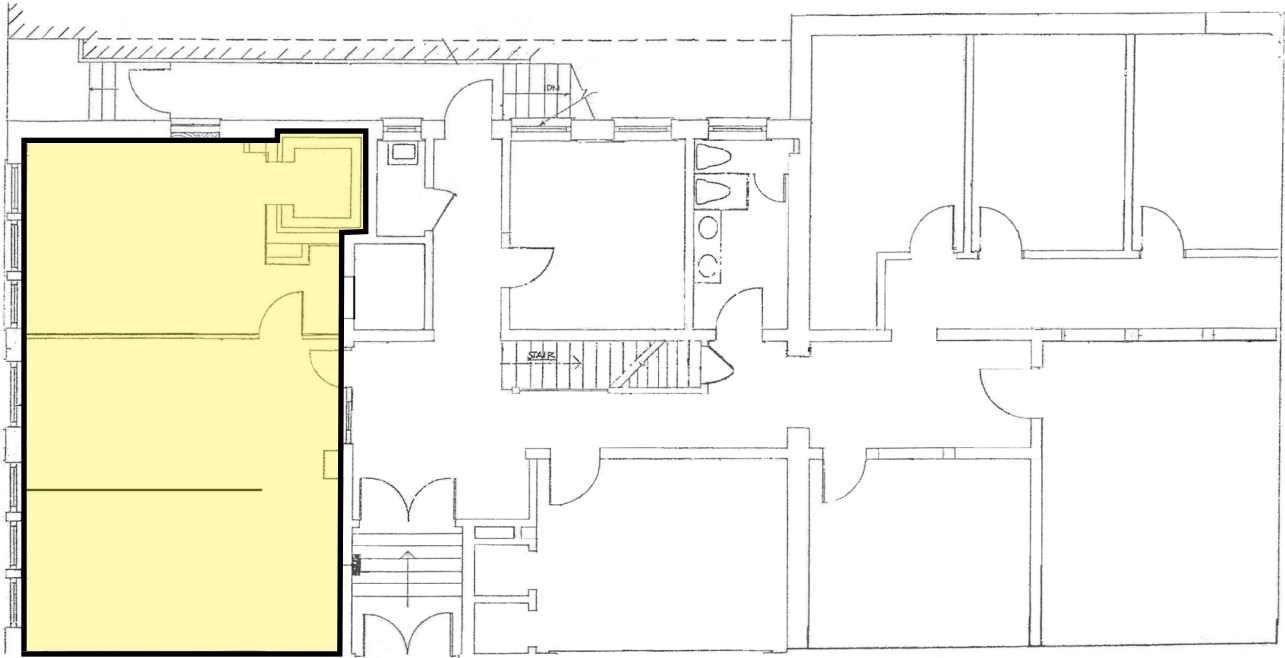
Electric Service:

Duquesne Light



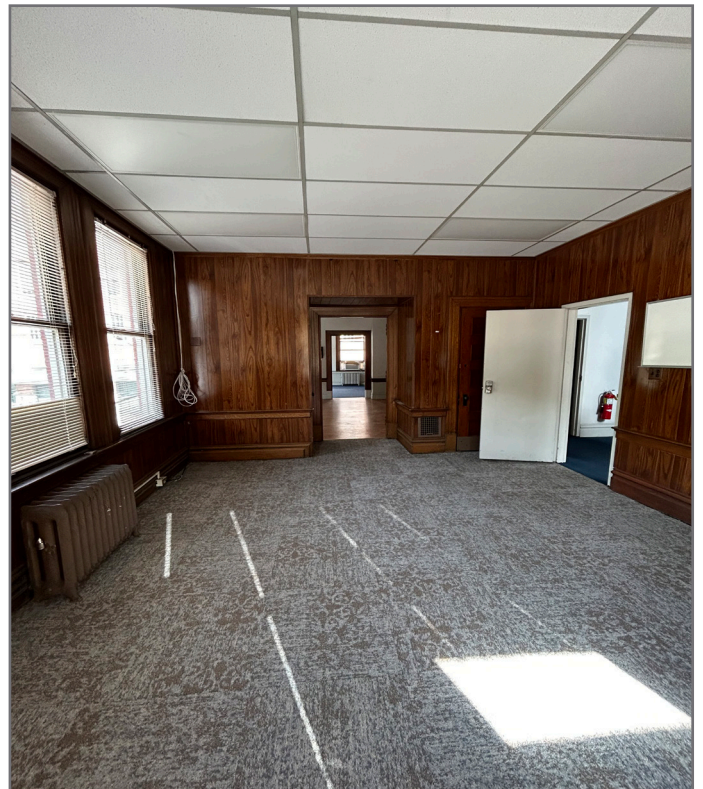
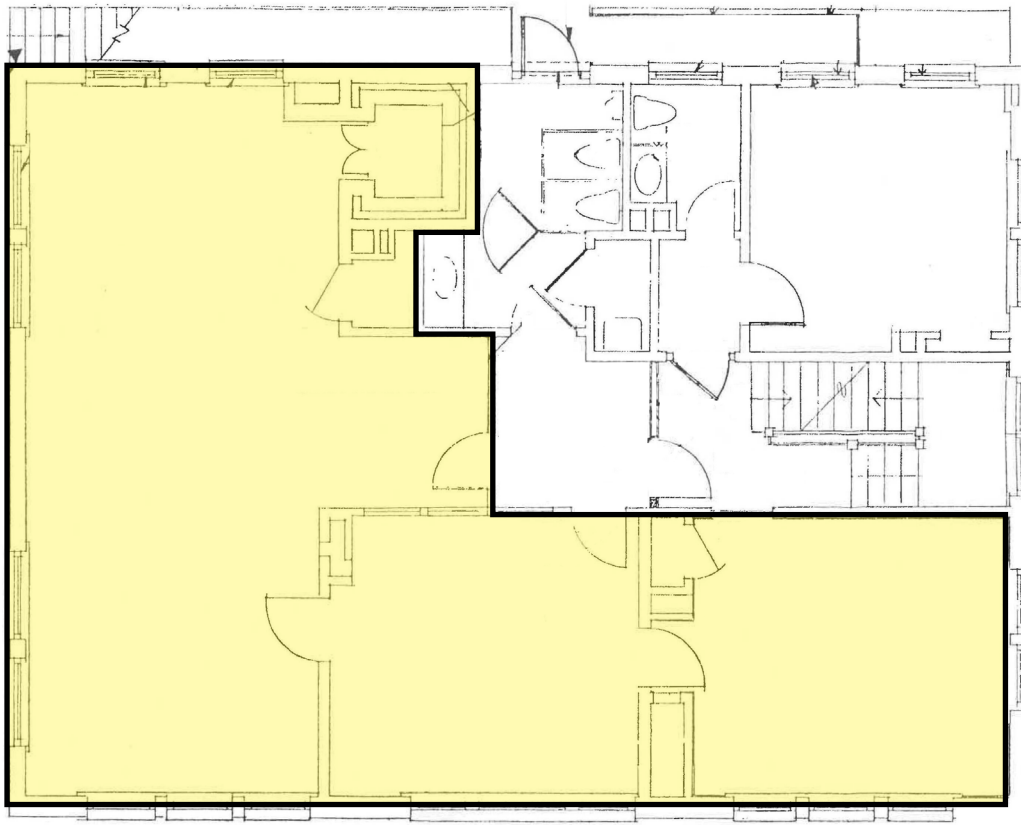
401 Bingham Street - Office

778 SF - 1st Floor

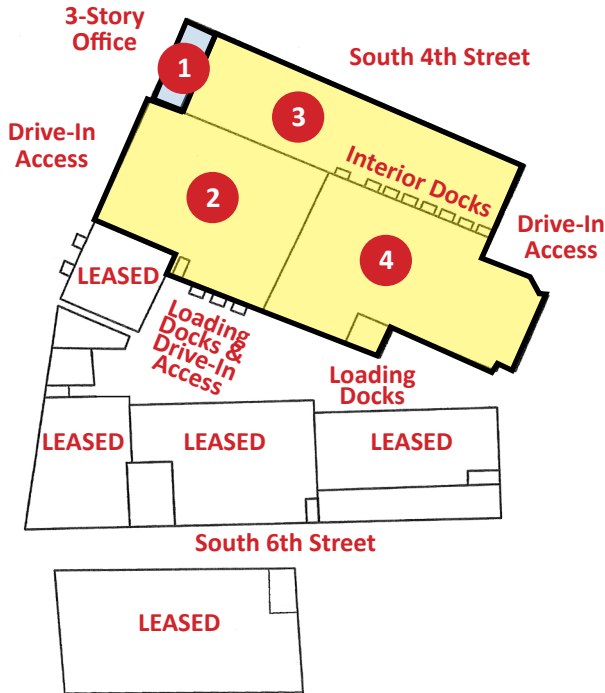


401 Bingham Street - Office

2,250 SF - 2nd Floor

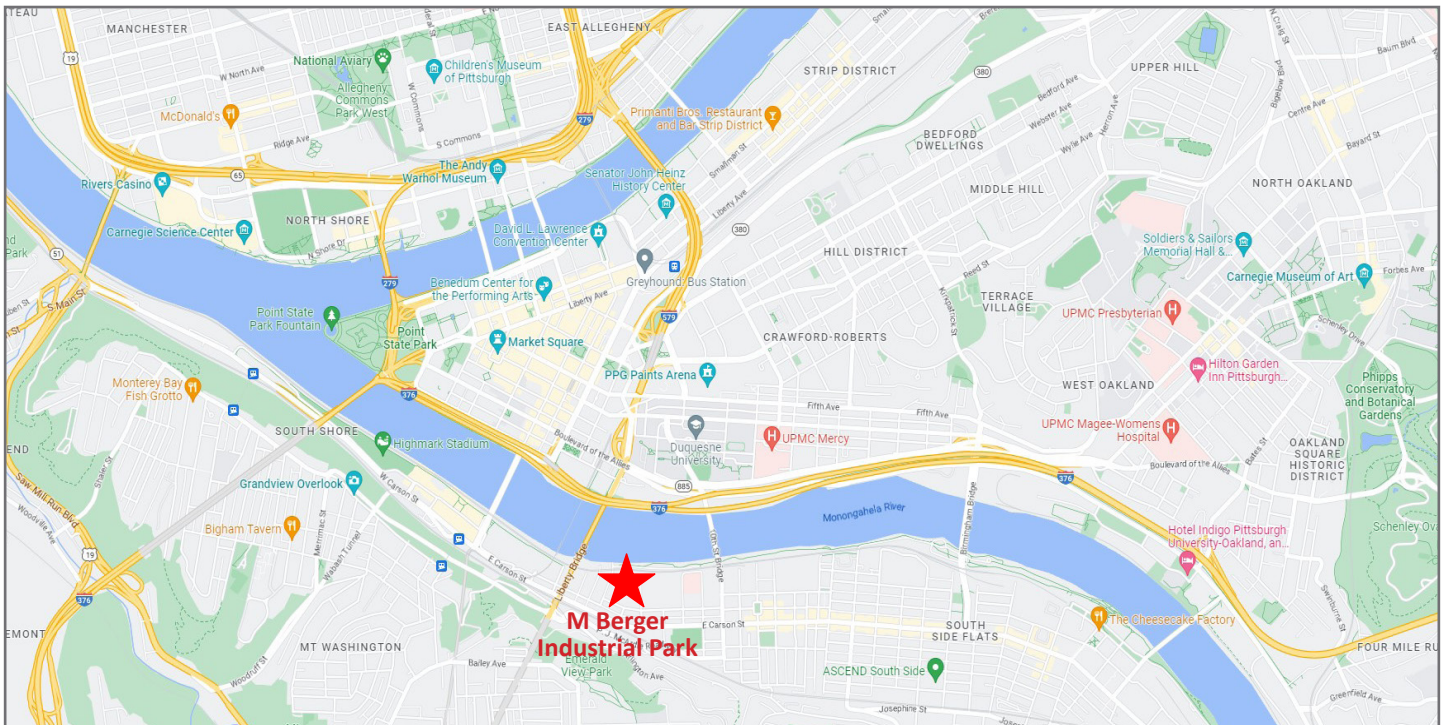


Up to 121,228 SF Contiguous Available (Areas 1-4)



Current Availabilities

Site Plan #	Address	Available SF	Type
1	401 Bingham	3,028 SF	Office
2	415 Bingham	40,800 SF	Warehouse / Storage
3	403 Bingham	32,400 SF	Warehouse / Storage
4	423 Bingham	45,000 SF	Warehouse / Storage



For more information please contact:

Joe Tosi, SIOR
Senior Vice President

Oxford Realty Services, Inc.
412.261.0200, ext 3471
jtosi@oxfordrealtyservices.com

OXFORD
REALTY SERVICES, INC.

2545 Railroad Street - Suite 300
Pittsburgh, PA 15222
www.oxfordrealtyservices.com