

The Offices at 3 Crossings

Riverfront West, Strip District, Pittsburgh, PA



Building **Size**

127,242 RSF

Available **Premises**

- 11,694 RSF - First Floor
- 12,786 RSF - Second Floor
- 5,171 RSF- Third Floor

Sublease **Term**

Through September 30, 2028

Sublease **Rate**

Negotiable

Property **Highlights**

- Newly constructed with premium finishes
- Furniture available - move-in ready
- 102 On-Site Parking Spaces (87 Garage and 15 Surface) plus additional parking in the HUB Garage
- EV Charging Stations and 40 secured Bike Spaces
- Direct access to outdoor plaza with furniture, fire pit and connection to Riverfront Trail
- Monument signage

First Floor 11,694 RSF



Cafe Area



Team Room



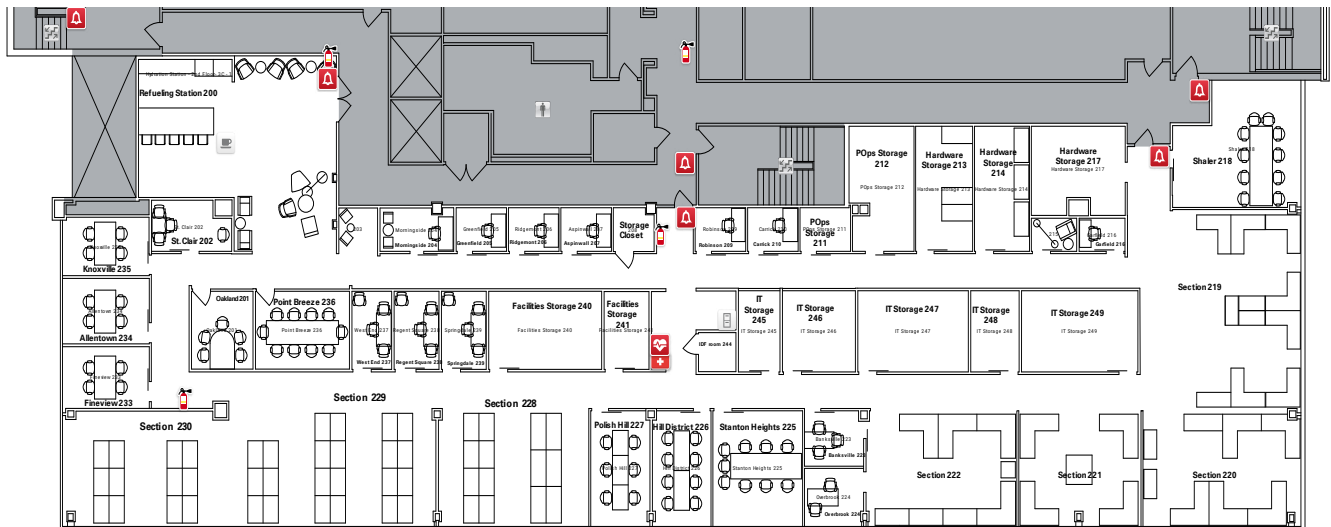
Open Area Workstations



Conference/Training Room



Second Floor 12,786 RSF



Cafe Area



Team Room



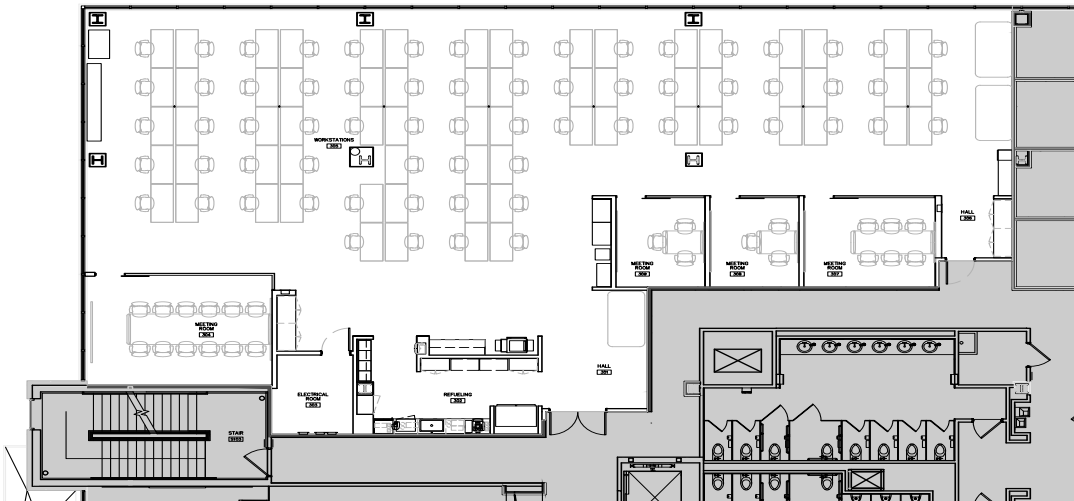
Open Area Workstations



Conference Room



Third Floor
5,171 RSF



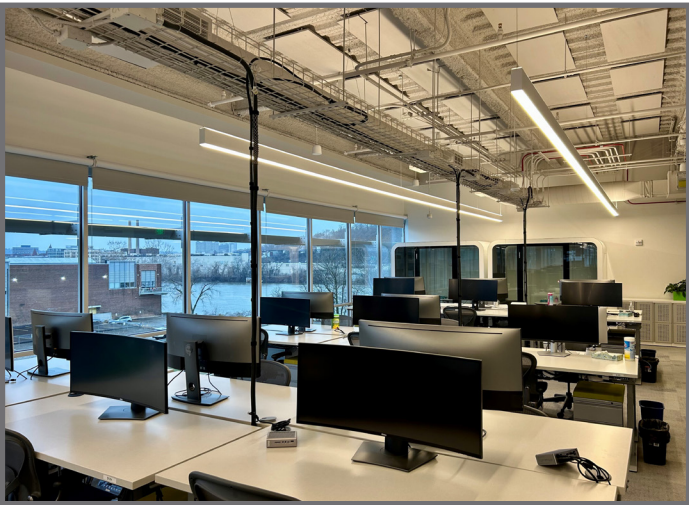
Cafe/Break Area



Team Room



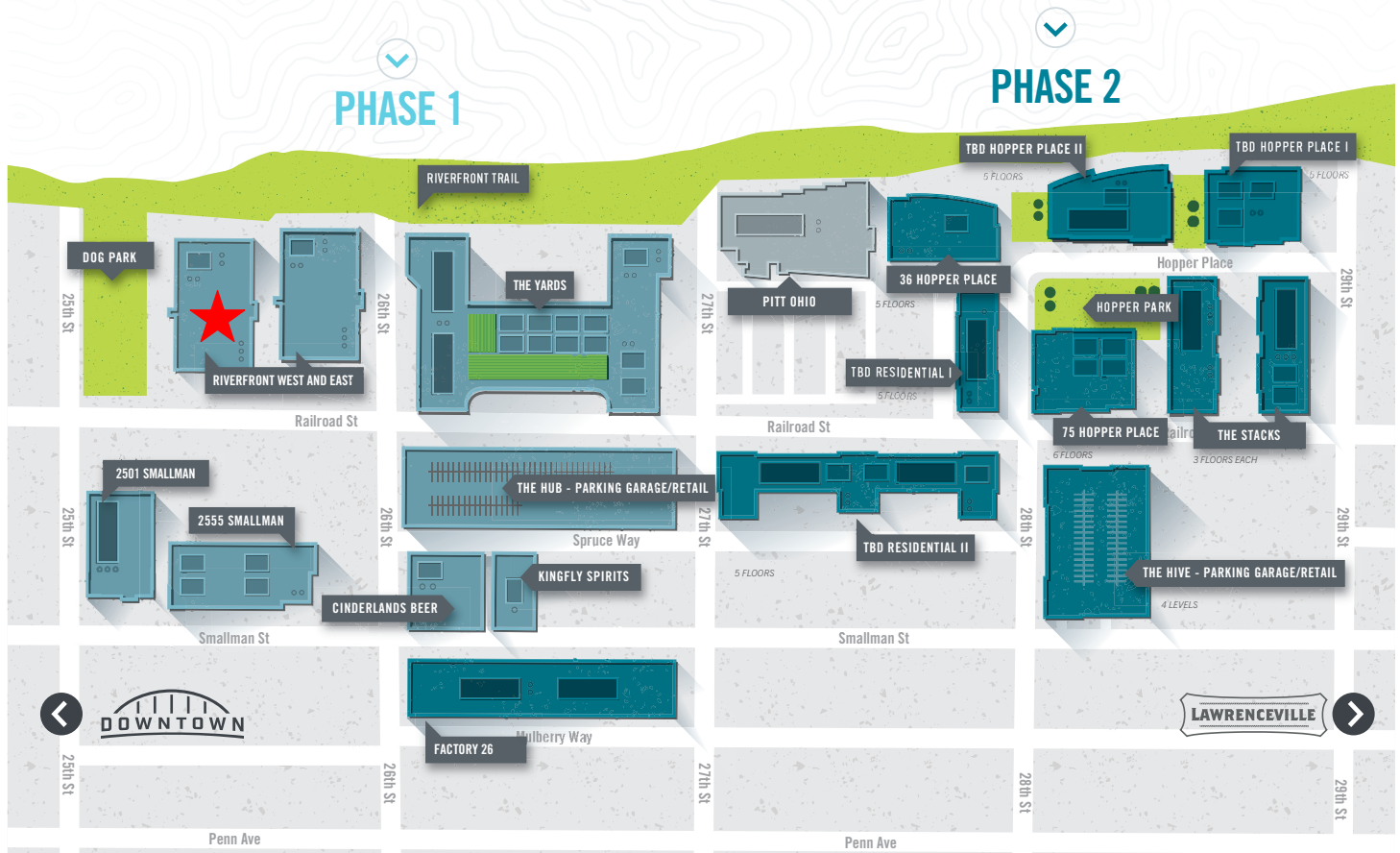
Open Area Workstations



Conference Room



3 Crossings - Live, Work and Everything Else



For more information please contact:

Joe Tosi, SIOR
Senor Vice President

Oxford Realty Services, Inc.
412.261.0200, ext 3471
jtosi@oxfordrealtyservices.com

OXFORD
REALTY SERVICES, INC.

2545 Railroad Street - Suite 300
Pittsburgh, PA 15222
www.oxfordrealtyservices.com

Although all information furnished regarding property for sale, rental or financing is from sources deemed reliable, such information has not been verified, and no express representation is made nor is any to be implied as to the accuracy thereof, and it is submitted subject to errors, omissions, change of price, rental or other conditions, prior sale, lease or financing, or withdrawal without notice. Rental terms and all dimensions are approximate and specifications are subject to change without notice. Oxford Realty Services, Inc., an independent real estate services company.