

For more information please contact:

**Andrew Martz**  
Associate

**Oxford Realty Services, Inc.**  
412.261.0200, ext 3486  
amartz@oxfordrealtyservices.com

**Joseph F. Tosi, SIOR**  
Senior Vice President

**Oxford Realty Services, Inc.**  
412.261.0200, ext 3471  
jtosi@oxfordrealtyservices.com

**OXFORD**  
REALTY SERVICES, INC.

2545 Railroad Street - Suite 300  
Pittsburgh, PA 15222  
www.oxfordrealtyservices.com

Although all information furnished regarding property for sale, rental or financing is from sources deemed reliable, such information has not been verified, and no express representation is made nor is any to be implied as to the accuracy thereof, and it is submitted subject to errors, omissions, change of price, rental or other conditions, prior sale, lease or financing, or withdrawal without notice. Rental terms and all dimensions are approximate and specifications are subject to change without notice. Oxford Realty Services, Inc., an independent real estate services company.

**OXFORD**  
REALTY SERVICES, INC.

Real Estate Brokerage Services

**FOR LEASE**

Office | Industrial | Retail | Investing | Consulting

## Whitehall Towers

470 Streets Run Road, Pittsburgh, PA 15236



### Building Size

31,697 RSF

### Available Premises

Second Floor

• 2,267 RSF

Fourth Floor

• 1,450 RSF

### Lease Rate

\$18.75/RSF Full Service

### Suite Highlights

Fourth Floor

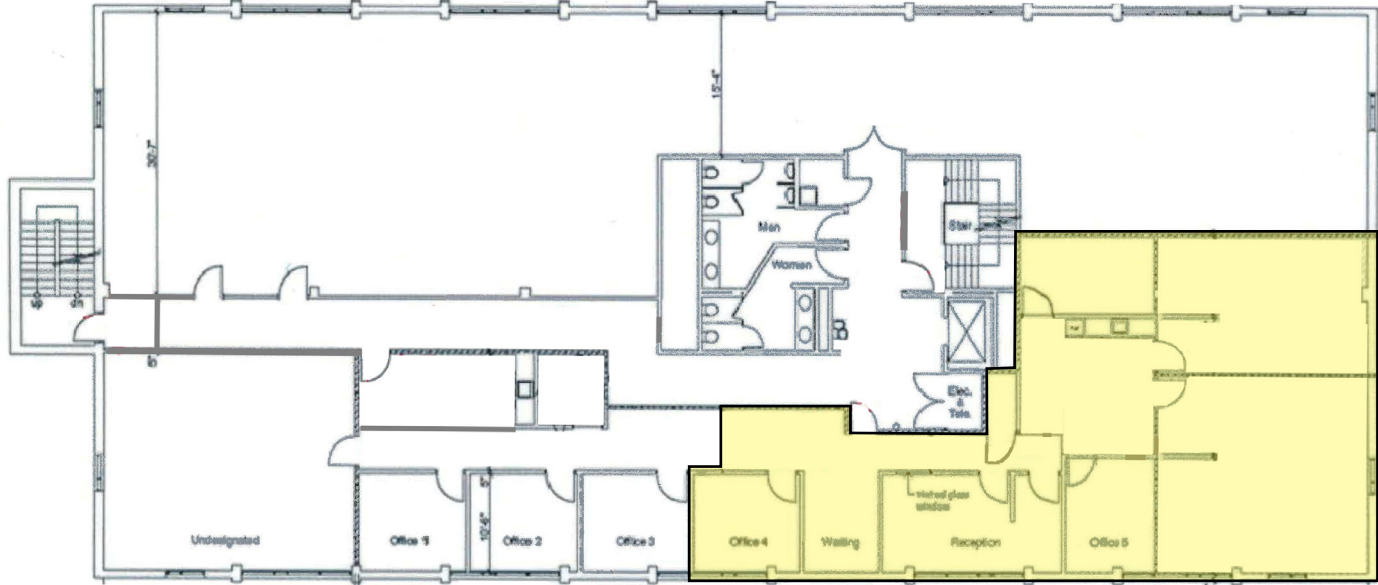
- Top floor, corner suite
- Reception, 3 offices & kitchenette

### Property Highlights

- Four (4) story office building
- On-site free parking
- 15 minutes from Downtown / Convenient South Hills location
- Monument signage available
- Excellent access to public transportation

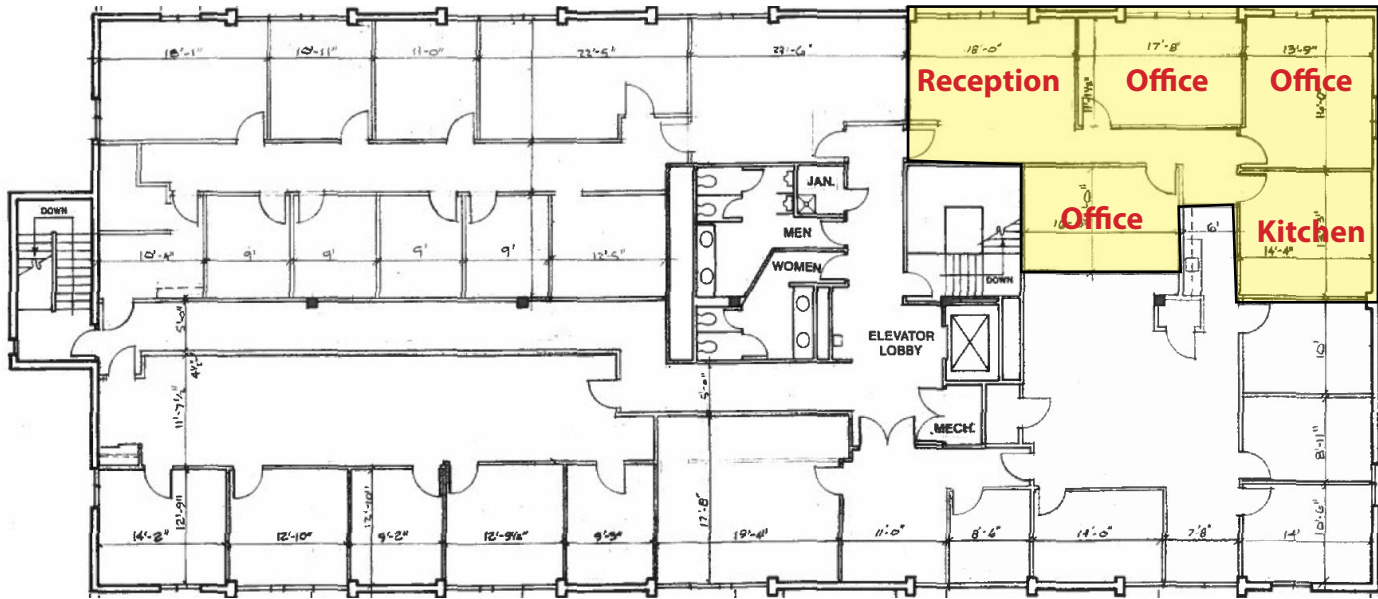


Suite 208 - 2,267 RSF



Although all information furnished regarding property for sale, rental or financing is from sources deemed reliable, such information has not been verified, and no express representation is made nor is any to be implied as to the accuracy thereof, and it is submitted subject to errors, omissions, change of price, rental or other conditions, prior sale, lease or financing, or withdrawal without notice. Rental terms and all dimensions are approximate and specifications are subject to change without notice. Oxford Realty Services, Inc., an independent real estate services company.

Suite 400 - 1,450 RSF



Although all information furnished regarding property for sale, rental or financing is from sources deemed reliable, such information has not been verified, and no express representation is made nor is any to be implied as to the accuracy thereof, and it is submitted subject to errors, omissions, change of price, rental or other conditions, prior sale, lease or financing, or withdrawal without notice. Rental terms and all dimensions are approximate and specifications are subject to change without notice. Oxford Realty Services, Inc., an independent real estate services company.