



For more information please contact:

**Andrew Martz**  
Associate

**Oxford Realty Services, Inc.**  
412.261.0200, ext 3486  
amartz@oxfordrealtyservices.com

**Joe Tosi, SIOR**  
Executive Vice President

**Oxford Realty Services, Inc.**  
412.261.0200, ext 3471  
jtosi@oxfordrealtyservices.com

**OXFORD**  
REALTY SERVICES, INC.

2545 Railroad Street  
Pittsburgh, PA 15222  
www.oxfordrealtyservices.com

Although all information furnished regarding property for sale, rental or financing is from sources deemed reliable, such information has not been verified, and no express representation is made nor is any to be implied as to the accuracy thereof, and it is submitted subject to errors, omissions, change of price, rental or other conditions, prior sale, lease or financing, or withdrawal without notice. Rental terms and all dimensions are approximate and specifications are subject to change without notice. Oxford Realty Services, Inc., an independent real estate services company.

**OXFORD**  
REALTY SERVICES, INC.

**FOR LEASE**

Real Estate Brokerage Services

Office | Industrial | Retail | Investing | Consulting

## 300 Bilmar Drive - Office with Flex Space

Pittsburgh, PA 15205



### Building Size

44,000 RSF

### Available Premises

First Floor (Available October 2024)

- 10,600 RSF - Office
- 532 RSF - Flex (ability to expand flex space)

### Asking Rate

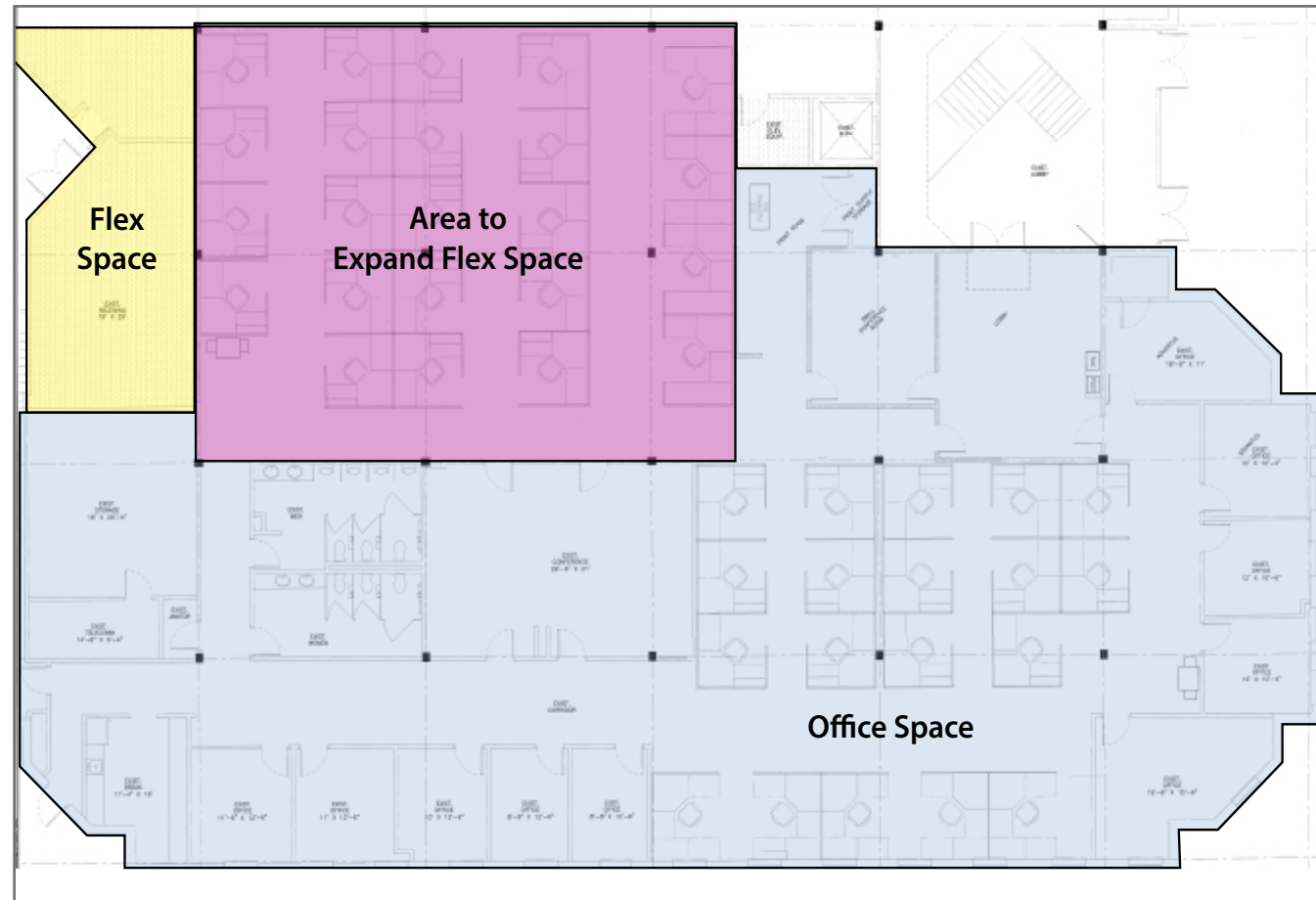
\$16.00 - \$17.00/RSF  
Plus Electric, Gas & Cleaning

### Property Highlights

- High end finishes - Move-in condition
- 10.5' clear height
- Prominent monument signage
- Free on-site parking
- Flex area for shipping and receiving
- Extremely convenient access located immediately off the I-79 and Crafton interchange
- Minutes to Settler's Ridge, the Mall at Robinson and all of the complimentary shopping and dining options
- 15 minutes from both the Pittsburgh International Airport and Downtown Pittsburgh



First Floor  
11,032 RSF - Office & Flex Space



Shipping & Receiving Area - Grade Level & Dock Access

