

NOW LEASING



144 NORTH MAIN STREET GREENSBURG, PA

UP TO 52,658 RSF AVAILABLE

OXFORD

www.oxfordrealtyservices.com

PROPERTY DESCRIPTION

BUILDING SIZE

81,639 RSF – Total

AVAILABLE PREMISES

- 2,475 RSF - Ground Floor
- 12,705 RSF - 2nd Floor
- 12,705 RSF - 3rd Floor
- 12,071 RSF - 4th Floor
- 12,702 RSF - 5th Floor

PROPERTY HIGHLIGHTS

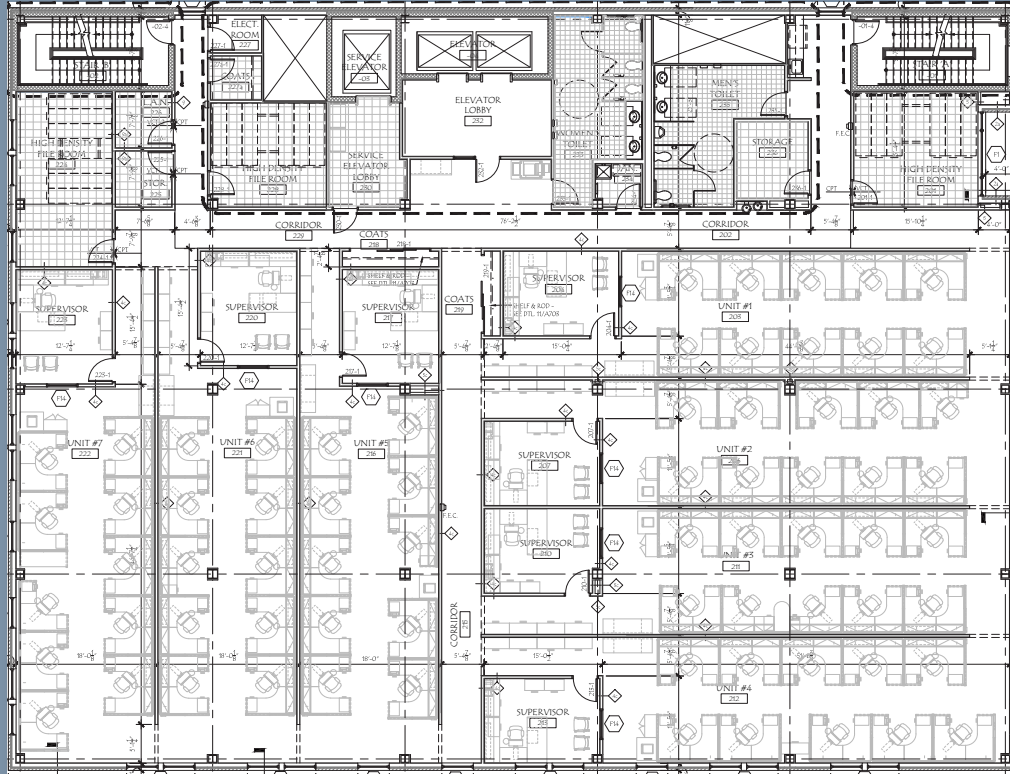
- 6 Story Class "A" office building situated in the heart of Greensburg's Central Business District.
- Flexible floorplans designed to accommodate a tenant's specific needs and requirements
- Located just minutes away from the Westmoreland County Courthouse and Seton Hill University
- Walking distance to multiple municipal parking lots available for lease
- Convenient access to the PA Turnpike (1-76), I-70 and US Route 30



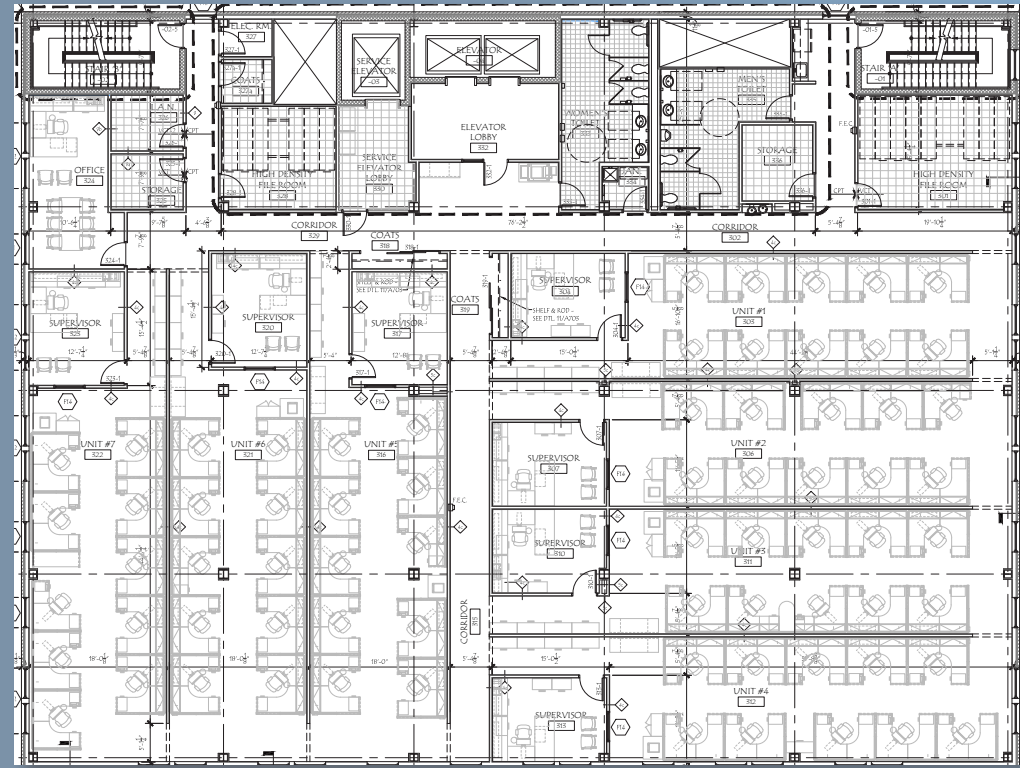
144 NORTH MAIN STREET

FLOOR PLANS

2ND FLOOR



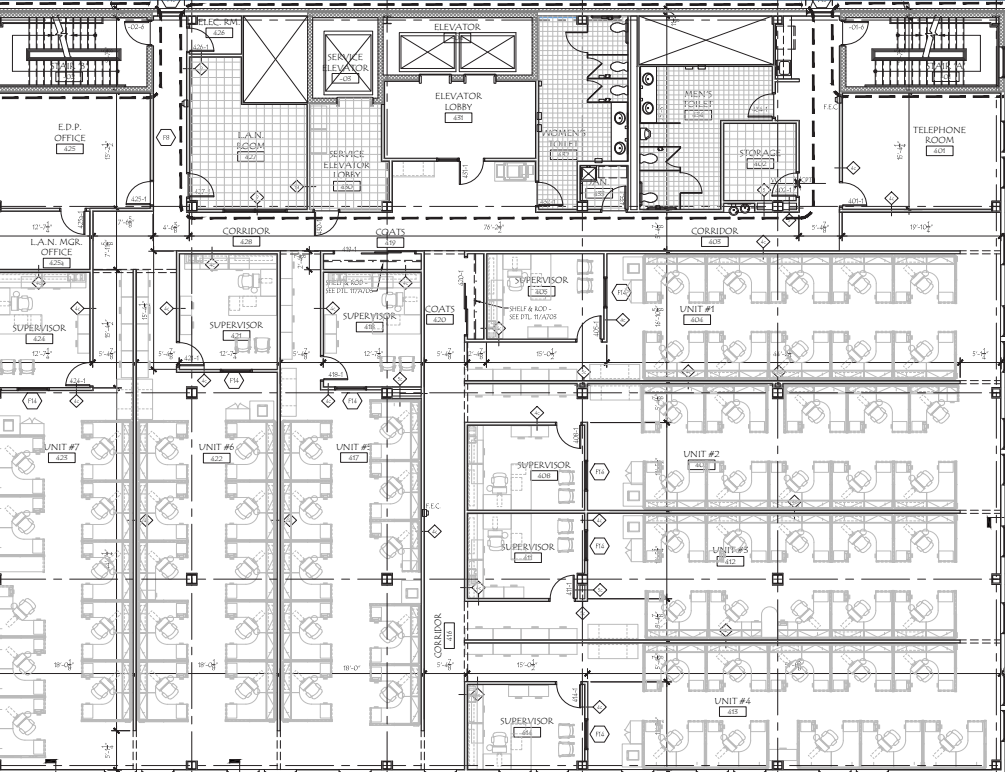
3RD FLOOR



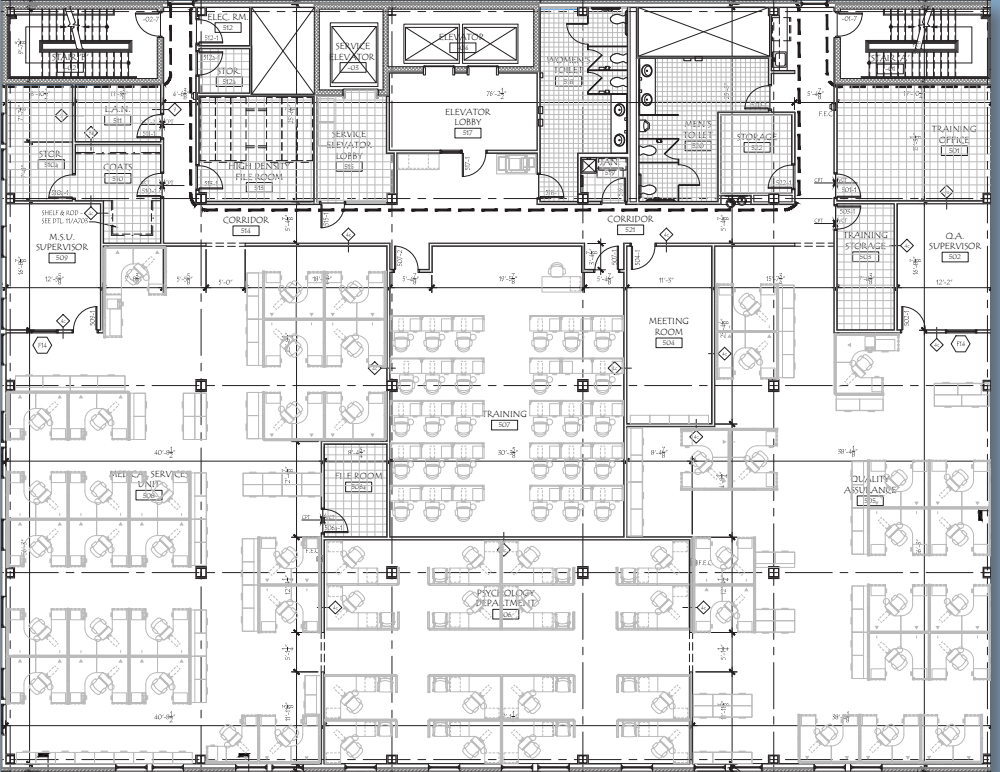
144 NORTH MAIN STREET

FLOOR PLANS

4TH FLOOR



5TH FLOOR



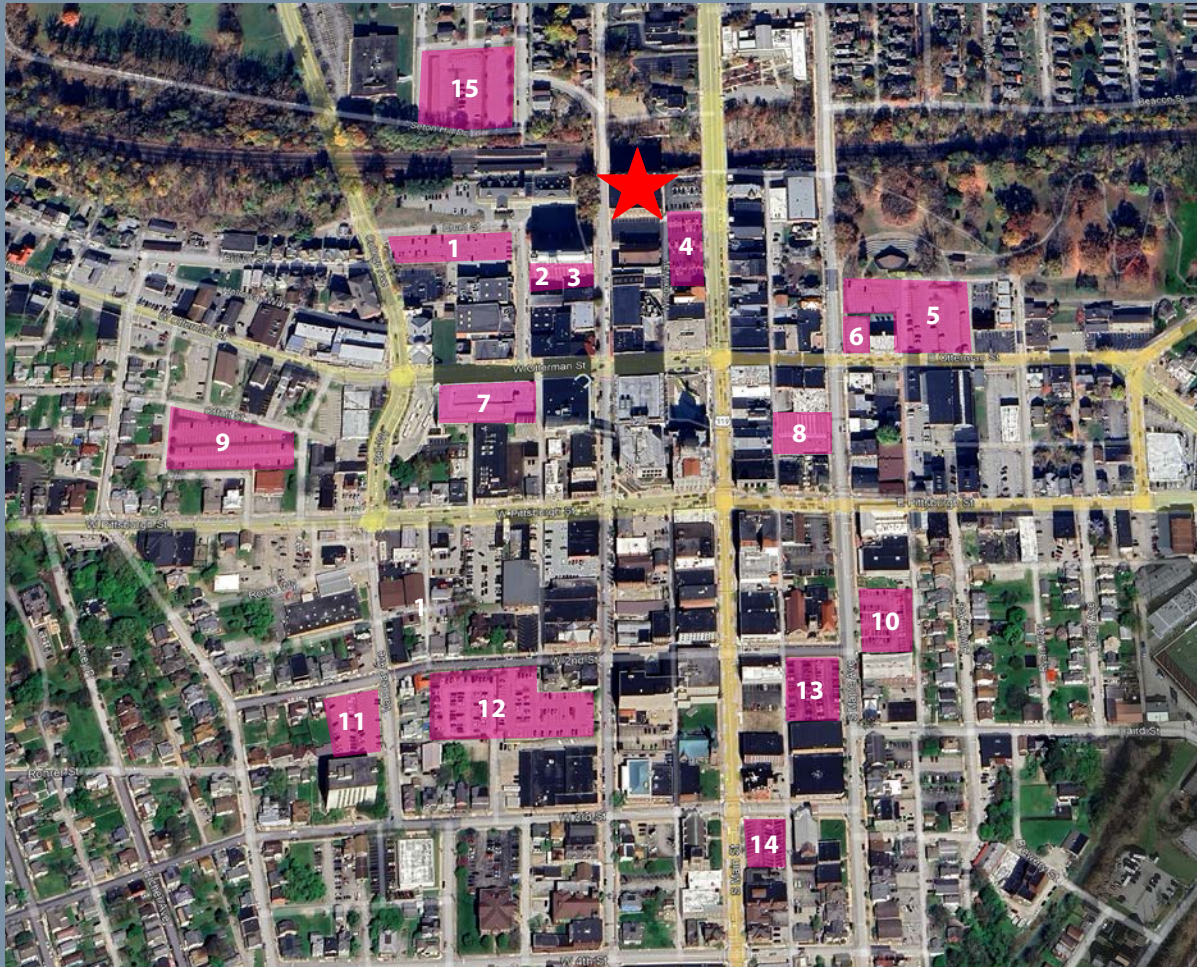
144 NORTH MAIN STREET

INTERIOR PHOTOS



144 NORTH MAIN STREET

PROPERTY PARKING

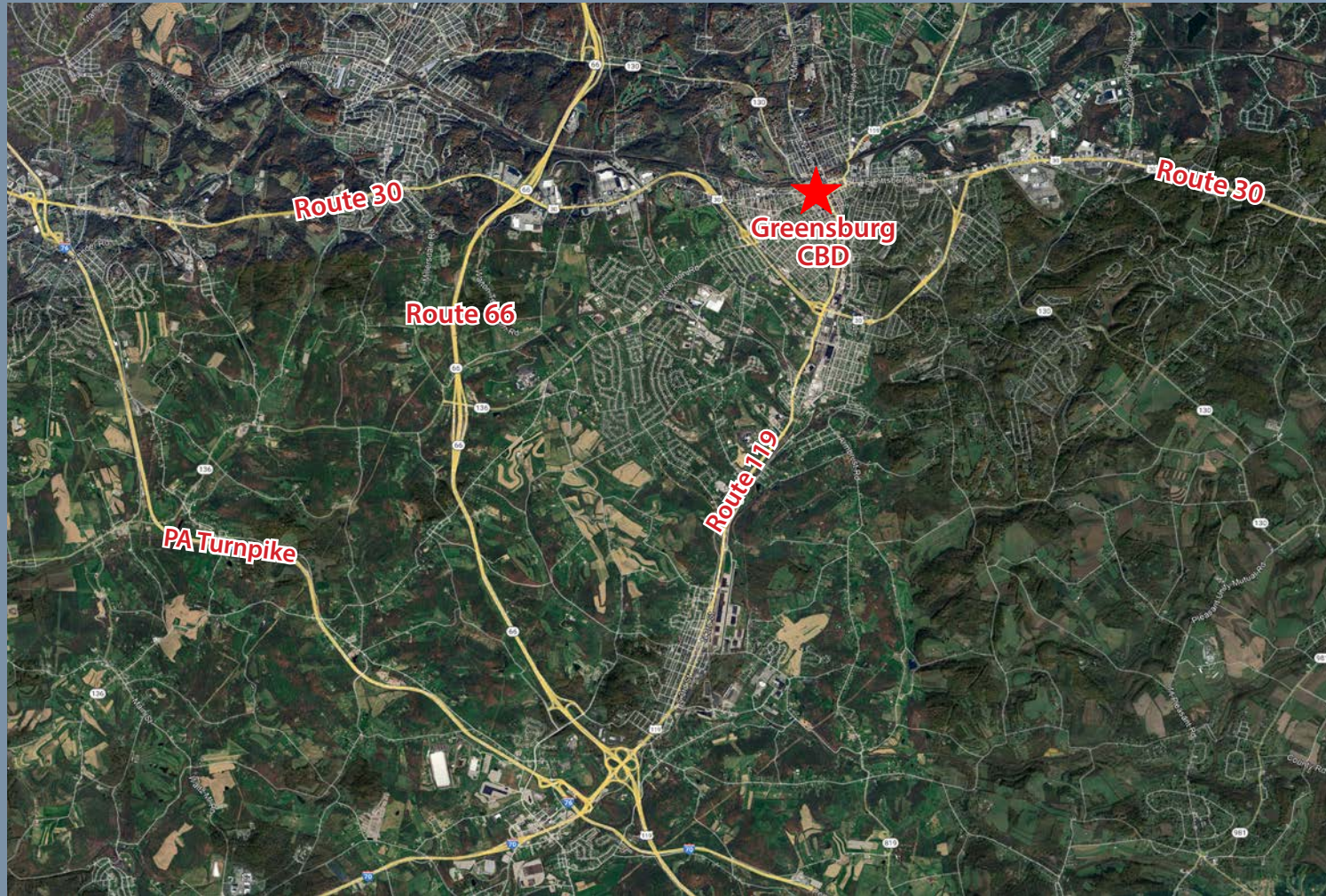


Downtown Greensburg Parking

- 1 George T. Kearns Lot
- 2 Chris Horner Lot
- 3 Gilhooley's Lot
- 4 Helman-Ghrist Lot
- 5 Cameron & David Keen Lot
- 6 Jamison Lot
- 7 Robert A. Bell Parking Garage
- 8 Dr. Robert W. Queale Lot
- 9 Wib Albright Lot
- 10 Dr. Bruce C. Boyle Lot
- 11 Bisignani Lot
- 12 Buncher Lot
- 13 Elena Hoffman Lot
- 14 Bononi Lot
- 15 Albert L. Grillo Lot

144 NORTH MAIN STREET

PROPERTY LOCATION



DEMOGRAPHICS

	1-MILE	3-MILES
Population	14,462	43,855
Average HH Income	\$67,953	\$81,560

For more information please contact:

Oxford Realty Services, Inc.

2545 Railroad Street
Pittsburgh, PA 15222
www.oxfordrealtyservices.com

Taylor N. Iaboni
Vice President

412.261.0200, ext 3493
tiaboni@oxfordrealtyservices.com

Joe Tosi, SIOR
Executive Vice President

412.261.0200, ext 3471
jtosi@oxfordrealtyservices.com

144 NORTH MAIN STREET