

Moon Professional Pavilion

1005 Beaver Grade Road, Coraopolis, PA 15108



Available Premises

Ground Floor

- 1,000 RSF
- 1,571 RSF

First Floor

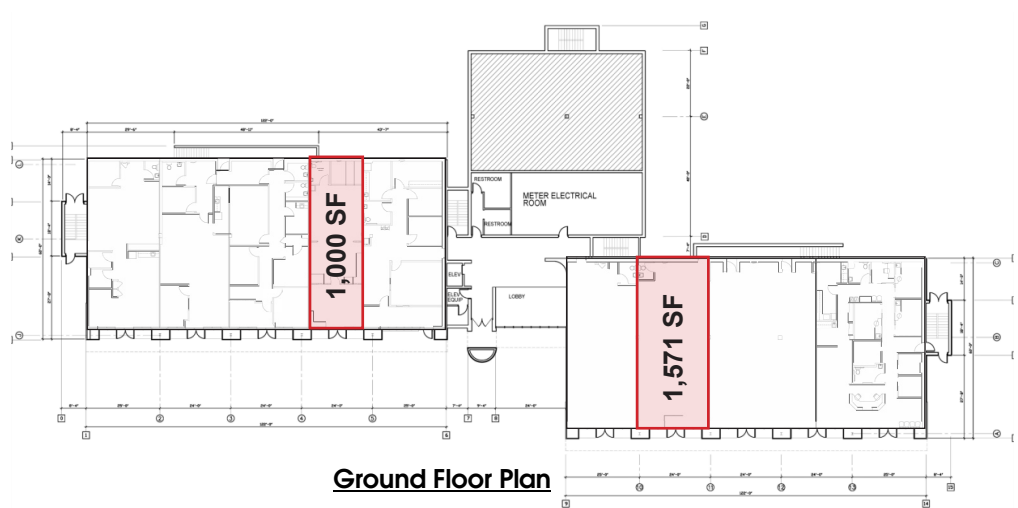
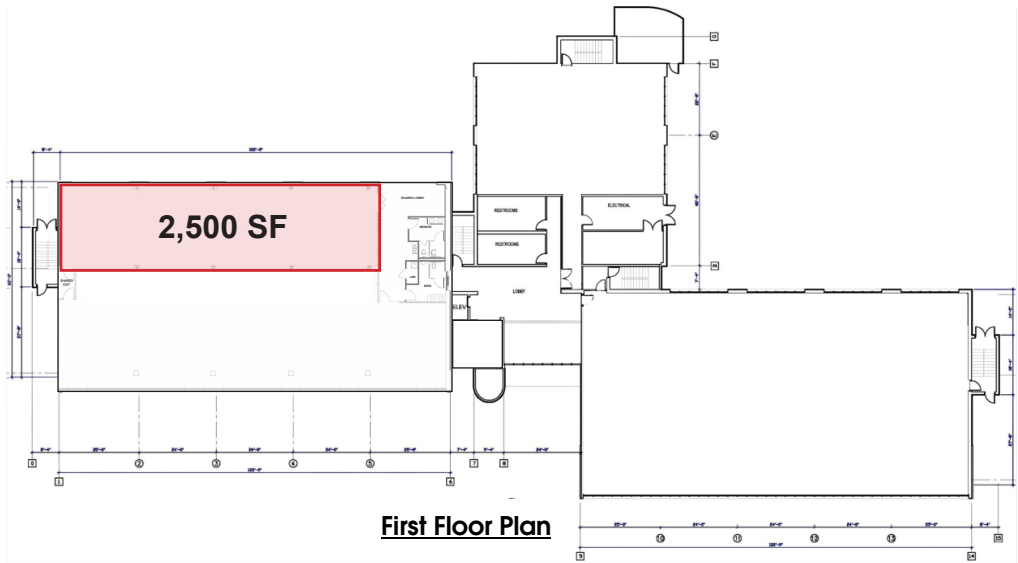
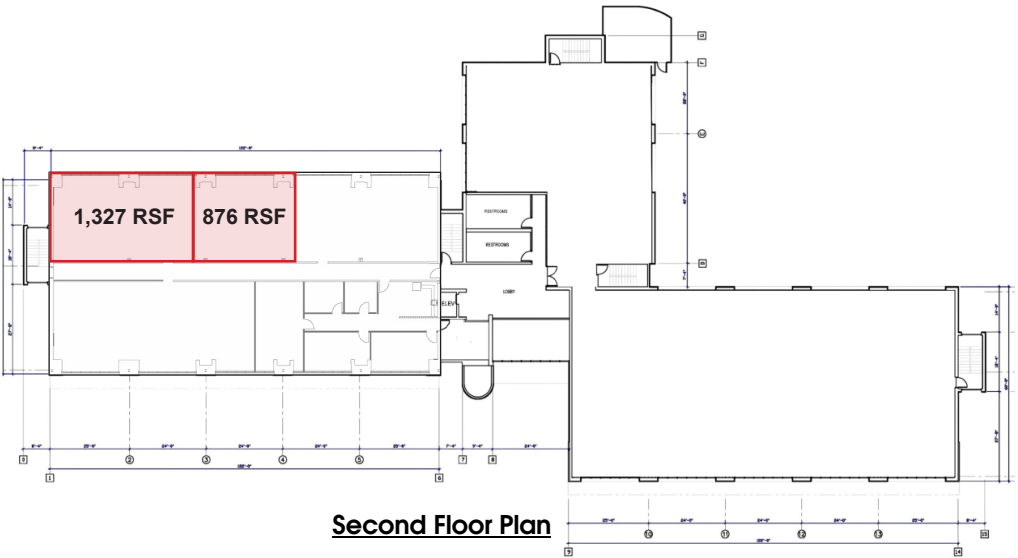
- 2,500 RSF

Second Floor

- 876 RSF
- 1,327 RSF

Property Highlights

- The Moon Professional Pavilion is a 55,042 SF, three-story building offering flexible Office, Retail, and Medical Office spaces for lease
- Extensively renovated in 2020, the building features modern infrastructure and updated finishes
- Ample parking with 258 spaces available on-site
- Home to Kinder Academy Childcare and Learning Center, offering added convenience for tenants and visitors
- Bright, naturally lit interiors enhance workspaces and customer areas
- Suites available in turnkey condition and can be customized to tenant specifications





AVERAGE DAILY TRAFFIC

10,885 Vehicles Daily - Beaver Grade Road

DEMOGRAPHICS

	1-MILE	3-MILES	5-MILES
Population	4,333	32,900	72,522
Avg. HH Income	\$113,194	\$115,095	\$116,237

Property Location

- Strategically located in Moon Township, the property benefits from high traffic flow and close proximity to a wide range of area amenities
- Conveniently situated just 10 minutes from Pittsburgh International Airport and 15 minutes from Downtown Pittsburgh
- Easy access via the Thorn Run Interchange on Business Route 60 (just ½ mile away)

For more information please contact:

Arthur J. DiDonato, Jr.
Senior Vice President, Retail Brokerage

Oxford Realty Services, Inc.
412.261.0200, ext 3436
adidonato@oxfordrealtyservices.com

Alec M. Parchinski
Associate

Oxford Realty Services, Inc.
412.261.0200, ext 3485
aparchinski@oxfordrealtyservices.com

OXFORD
REALTY SERVICES, INC.

2865 Railroad Street, Suite 202
Pittsburgh, PA 15222
www.oxfordrealtyservices.com

Although all information furnished regarding property for sale, rental or financing is from sources deemed reliable, such information has not been verified, and no express representation is made nor is any to be implied as to the accuracy thereof, and it is submitted subject to errors, omissions, change of price, rental or other conditions, prior sale, lease or financing, or withdrawal without notice. Rental terms and all dimensions are approximate and specifications are subject to change without notice. Oxford Realty Services, Inc., an independent real estate services company.